

# 2014 SUMMER *Class Schedule*



Visit our website to find out about...

- Studying online
- Studying on campus
- Short sessions for educators

**[summer.wallawalla.edu](http://summer.wallawalla.edu)**

# For Information

**Concerning application information, contact:**

Office of Marketing and Enrollment Services  
509-527-2327 or 800-541-8900/Fax 509-527-2397  
e-mail: [info@wallawalla.edu](mailto:info@wallawalla.edu)

**Concerning academic information, contact:**

Scott Ligman, Director of the Summer Session  
Associate Vice President for Academic Administration  
509-527-2395 or 866-441-2395/Fax 509-527-2394  
e-mail: [summer@wallawalla.edu](mailto:summer@wallawalla.edu)

**Concerning financial arrangements, contact:**

Nancy Cleveland, Assistant Director  
Student Financial Services  
509-527-2815 or 800-656-2815/Fax 509-527-2556  
e-mail: [stufin@wallawalla.edu](mailto:stufin@wallawalla.edu)

**Concerning work opportunities, contact:**

Twyla Kruger, Employment Coordinator  
Student Financial Services  
509-527-2357 or 800-656-2357  
e-mail: [stuemp@wallawalla.edu](mailto:stuemp@wallawalla.edu)

**Concerning dormitory or off-campus housing, contact:**

Dean of Men: Sittner Hall, 509-527-2111  
Dean of Women: Foreman/Conard Hall, 509-527-2531  
Village Housing Property Manager: 509-527-2709

**Concerning student life issues, contact:**

David Richardson Jr., Vice President for Student Life and Mission  
509-527-2511  
e-mail: [sheila.meharry@wallawalla.edu](mailto:sheila.meharry@wallawalla.edu)

**Concerning Rosario Beach Marine Laboratory, contact:**

RBML Director, Department of Biological Sciences  
509-527-2602  
e-mail: [rosario@wallawalla.edu](mailto:rosario@wallawalla.edu)  
website: [rosario.wallawalla.edu](http://rosario.wallawalla.edu)

**Concerning School of Nursing, Portland Campus, contact:**

Lucille Krull, Dean, or Jan Vigil, Program Adviser  
School of Nursing, Portland Campus  
503-251-6115/Fax 503-251-6249

**Concerning School of Social Work, Montana Campuses, contact:**

Pamela Bing Perry, Billings MSW Program Coordinator  
406-254-9907 or 888-263-4880/Fax 406-254-0648  
e-mail: [pamela.bingperry@wallawalla.edu](mailto:pamela.bingperry@wallawalla.edu)

Nancy Peters, Missoula MSW Program Coordinator  
406-549-4928 or 888-296-7416/Fax 406-549-5215  
e-mail: [nancy.peters@wallawalla.edu](mailto:nancy.peters@wallawalla.edu)

---

Walla Walla University  
Summer Session Office  
204 South College Avenue  
College Place, WA 99324-1198  
509-527-2395 or 866-441-2395  
website: [summer.wallawalla.edu](http://summer.wallawalla.edu)

# Table of Contents

Contact Information .....	2
Calendar for the Summer of 2014 .....	5
Academic Information .....	6
Admission	
Registration	
Refund and Withdrawal Deadlines	
Financial Information .....	8
Tuition and Fees	
Student Employment	
Financial Aid	
Online Courses .....	10
Online General Studies Courses	
Other Online Courses	
Summer Advantage Program .....	12
Study Tours .....	13
Rosario Beach Marine Laboratory .....	14
Short-term Courses .....	15
Class Schedule .....	17
Course Descriptions .....	22
Academic Support Services .....	24
Summer Personnel .....	25
Administration	
Summer Session Faculty	
Schedule Planner .....	29
Campus Buildings and Map .....	30

## Equal Opportunity Commitment

It is the policy of Walla Walla University to provide equal educational opportunity without regard to age, race, color, religion, national origin, sex, marital status, disability, or other protected classes as required by local, state, and federal laws that apply to the University. In addition, the University provides equal employment opportunity without regard to age, race, color, national origin, sex, marital status, disability, or other protected classes as required by local, state, and federal laws that apply to the University.

*(This page intentionally blank to preserve  
page numbering from printed version.)*

# Calendar

## Summer of 2014

### Main Campus:

Ten-week session	June 23–August 29
Eight-week session	June 23–August 15
Six-week session	June 23–August 1
Short sessions	Varying dates beginning June 23 or later
Portland Nursing Campus	June 23–August 29
Rosario Beach Marine Laboratory	June 24–August 14

April 21, Monday	Registration Begins
June 4, Wednesday	Financial Clearance Begins
June 6, Friday	Summer Advantage Reservation Deadline
June 23, Monday	Instruction Begins
June 23, Monday	Portland Campus Registration
June 23, Monday (4:00 p.m.)	Financial Clearance Deadline
June 23, Monday (4:00 p.m.)	New Undergraduate Student Orientation (CTC 305)
June 24, Tuesday (6:30 p.m.)	Rosario Beach Marine Laboratory Registration
June 25, Wednesday (11:00 a.m.)	CommUnity (University Church, Heubach Chapel)
June 29, Sunday (9:00 a.m.)	ACT Test, for freshmen who haven't already taken it (TLC classroom)
July 4, Friday	Independence Day Holiday
August 1, Friday	Six-week Session Ends
August 15, Friday	Eight-week Session Ends
August 29, Friday	Ten-week Session Ends
August 29, Friday	Completion Deadline for August Graduates

## Spiritual Programs

Fridays (8:00 p.m.)	Vespers (Dale Court)
Saturdays (9:30 a.m.)	Collegiate Sabbath School; Community Builders/Children and Adults
Saturdays (10:45 a.m.)	Summer Light Worship Service (University Church Sanctuary)
Saturdays (As announced, approx. 20 minutes before sunset)	Meditations (Meets at location of Breakaway activity unless otherwise announced)
Arranged times	Small Groups (Locations arranged)
Contact chaplain:	<paddy.mccoy@wallawalla.edu>

## Social/Recreational Programs

### "Breakaway"

*Schedule subject to change; watch for announcements*

June 25, Wednesday evening (5:30 pm)	Strawberry & Ice Cream Social (Conard Courtyard)
June 28, Saturday night (9:00 pm)	Softball Game (WEC Softball Field)
July 2, Wednesday (noon)	Wakeboarding & Waterskiing (Fishhook Park)
July 12, Sabbath (noon)	Jubilee Lake Outing
July 18, Friday (noon)	Wakeboarding & Waterskiing (Fishhook Park)
July 23, Wednesday (8:00 pm)	Game Night (SAC)
July 26, Saturday night (9:00 pm)	Open Gym (WEC)
July 29, Tuesday evening (TBA)	Bowling (location TBA)
August 2, Saturday night (9:00 pm)	Open Gym (WEC)
August 8, Friday (3:00 pm)	Golf (location TBA)

*Additional Breakaway activities will be announced; possible events and activities include:*

Walla Walla Sweets Baseball Game (Borleske Stadium)  
 Water Park (Milton-Freewater)  
 Silverwood Theme Park (Northern Idaho)

# Academic Information

## Admission

Individuals seeking admission to Walla Walla University must apply for admission either online at [wallawalla.edu/apply](http://wallawalla.edu/apply) or on forms supplied by the Marketing and Enrollment Services office. Prospective undergraduate students must meet admission requirements as outlined in the University's Undergraduate Bulletin. Prospective graduate students must meet admission requirements as outlined in the Graduate Bulletin. A "Steps to Enrollment Checklist" for either undergraduate or graduate students can be found at [wallawalla.edu/newsteps](http://wallawalla.edu/newsteps).

North Pacific Union Conference K-12 teachers who are not seeking to obtain a graduate degree do not need to apply for admission. They should instead refer to the registration information in the following section.

Individuals who are not working on a degree may apply at the Academic Records Office to take any course for which they have sufficient background. As non-matriculating students, they are not eligible for a degree, although by completing requirements for regular admission they may become degree candidates.

## Registration

Continuing/returning students may register for classes online through myWWU beginning April 21. New students, including Summer Advantage participants, will be given an opportunity to register at academy campuses or by phone (800-558-2132) after April 21. Distance learning students may register according to the instructions at [wallawalla.edu/academics/distance-learning-d2l](http://wallawalla.edu/academics/distance-learning-d2l) (see page 10).

North Pacific Union Conference K-12 teachers who qualify for conference sponsorship may register online at [summer.wallawalla.edu/k-12](http://summer.wallawalla.edu/k-12) after April 21. Conference authorization will be verified before the registration is processed. Early registration is encouraged.

Any students, including K-12 teachers, who have not completed registration in advance may register at the Academic Records Office during regular office hours on the first day of classes. Registration is not official until all procedures have been completed and financial clearance has been arranged.

## Financial Clearance

Online financial clearance is required and may be arranged through a student's myWWU account or through Student Financial Services after June 4 (see page 8). **Students who register for classes but do not obtain financial clearance by 4 p.m. on June 23 will be automatically dropped from all summer courses.**

## Rosario Beach Marine Laboratory Registration

Students planning to enroll at the Rosario Beach Marine Laboratory must submit an online Rosario application and fee ([rosario.wallawalla.edu](http://rosario.wallawalla.edu)). Registration will be held at Rosario on Tuesday, June 24, at 6:30 p.m. Financial and housing arrangements must be made prior to arrival. See page 14.

## Veterans Registration

Undergraduate students receiving veterans educational benefits need to register for a full course load of 9-12 credits. Questions regarding enrollment for summer school should be directed to the veterans adviser in the Academic Records Office.

## Late Registration

Students who register after a class or workshop has begun will be charged a late registration fee of \$75. Students may not register for eight-week classes after the first week of the summer term. Students taking short-term courses must be registered and in attendance the first day of classes.

## Course Load

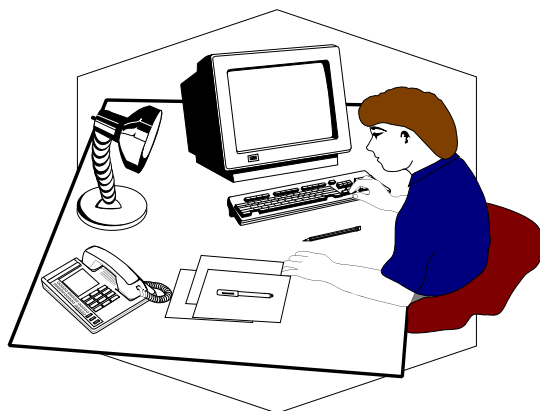
The maximum course load for which an undergraduate student may enroll is 12 credits distributed evenly throughout the eight-week session, unless an overload is approved by the associate vice president for academic administration. A course load of 9-12 credits is considered a full load for undergraduate students for the eight-week session. Course loads for graduate students vary according to the program of study.

## Withdrawals

Students withdrawing from any or all courses must submit the appropriate official withdrawal form to the Academic Records Office before the class(es) are 75 percent over. During Summer Session, withdrawal deadlines vary according to the starting date and duration of each class; the table below lists main session withdrawal deadlines, as well as refund deadlines. A complete schedule of withdrawal deadlines for all sessions is available at the Academic Records Office.

When a student withdraws during the quarter, no refund will be made until 30 days after the close of the month in which the student withdrew. Students who leave school without completing withdrawal procedures will be charged until proper arrangements are made. Refunds, if applicable, will be based on the date these arrangements are completed, not the date course attendance ended.

Course Session Dates	100% Refund Deadline	75% Refund Deadline	50% Refund Deadline	Withdrawal Deadline
June 23–August 29	June 30	July 8	July 22	August 14
June 23–August 15	June 27	July 3	July 16	August 4
June 23–August 1	June 26	July 1	July 10	July 24
June 23–July 18	June 25	June 27	July 3	July 14



# Financial Information

## Tuition

Undergraduate tuition for the summer quarter is \$648 per quarter hour; graduate tuition is \$560 per quarter hour. All students should plan to pay their tuition at the time of registration. Students who register for classes but do not obtain financial clearance by **4 p.m. on June 23**, the first day of summer quarter, will be automatically dropped from all summer courses.

Fees are charged as published in the online 2013-14 Walla Walla University Financial Bulletin at [wallawalla.edu/academics/bulletins](http://wallawalla.edu/academics/bulletins). Workshops or extended field trips may require payment of special fees. See page 14 for Rosario Beach Marine Laboratory charges. Students applying to the Portland Campus Nursing program should contact the School of Nursing for financial information.

## Tuition – North Pacific Union Conference Teachers

Teachers from within the North Pacific Union Conference of Seventh-day Adventists whose employing conferences confirm that they are under contract for the 2014-15 school year may qualify for a tuition waiver. However, **teachers must pay directly when billed for books and supplies, graduation fees, any miscellaneous class fees, and room rental charges.** Conference sponsorship does not cover classes requiring individualized instruction (aviation, music lessons, etc).

## Tuition Refunds

A student withdrawing from classes during the summer quarter will receive a refund in accordance with the policy stated in the online Financial Bulletin. A 100 percent refund is given if no more than 10 percent of the class is over, 75 percent if no more than 20 percent of the class is over, and 50 percent if no more than 40 percent of the class is over. Refund deadlines vary according to the length and dates of each class; see page 7 for main session refund dates. A complete schedule of refund dates for all sessions is available at the Academic Records Office.

When a student withdraws during the quarter, no refund will be made until 30 days after the close of the month in which the student withdrew. Students who leave school without completing withdrawal procedures will be charged until proper arrangements are made. Refunds, if applicable, will be based on the date these arrangements are completed, not the date course attendance ended.

## Housing

Single students are expected to live in the residence halls unless an exception is approved by the Office of Student Life and Mission. Residence hall rates are as follows:

Foreman Hall—\$112 per week double occupancy; \$168 per week single occupancy  
Conard or Sittner Hall—\$107 per week double occupancy; \$160 per week single occupancy  
Hansen Hall (Portland campus)—\$132 per week

## Cafeteria

Vegetarian meals are available at the main campus dining room in Kellogg Hall from 11:30–1:00 weekdays, or as announced. Students may purchase noon meals for a flat rate of \$7.90 per meal. All cafeteria purchases by enrolled students, dormitory residents, or summer campus workers may be charged on student accounts. Enrolled students may also charge meals and food items, up to \$80 per month, at The Express, a university-operated mini-mart.

## Music Fees

Music lessons can be taken for credit or no credit. When lessons are taken for credit, in addition to the regular tuition charge there is a lesson fee of \$175 per quarter for nine half-hour lessons or \$350 per quarter for nine one-hour lessons. When lessons are not taken for credit, the lesson fee is \$300 per quarter for nine half-hour lessons or \$600 per quarter for nine one-hour lessons.

## Miscellaneous Course Fees

ART 395, Methods of Teaching Art . . . . .	\$20	FILM 215, Introduction to Film Literature . . . . .	\$15
CHEM 144, General Chemistry Lab . . . . .	\$30	FILM 416, Teaching With Film Literature . . . . .	\$15
CHEM 145, General Chemistry Lab . . . . .	\$30	NRSG 211, Fundamentals of Nursing Lab . . . . .	\$100
CHEM 146, General Chemistry Lab . . . . .	\$30	NRSG 212, Health Assess/Nursing Process Lab . . .	\$100
EDUC 495, Colloquium: Child Abuse . . .	\$100	NRSG 213, Pharmacology in Nursing Lab . . . . .	\$100
ENGL 323, Writing for Engineers . . . . .	\$20	PHOT 456, Digital Photo/Imaging for Educators . . .	\$45



## Insurance

All registered, tuition-paying graduate and undergraduate students attending the College Place, Montana, Portland, or Rosario campuses, and students in the summer work program, are covered by the Student Accident Insurance policy.

If a student has been enrolled in the mandatory student sickness and additional accident insurance during the regular 2013-14 school year, that coverage is in effect through September 1, 2014. All new undergraduate students will be enrolled in this coverage for the summer at a cost of \$539 unless they submit an online waiver form verifying comparable coverage to Campus Health and Wellness at registration time.

## On-campus Student Employment

Although Walla Walla University strives to meet each student's employment needs, work opportunities are limited during the summer months. Students are strongly urged to make arrangements for work **before** arriving on campus because employment is not guaranteed. Employment opportunities may be available in grounds, custodial, residence hall housekeeping, plant maintenance, The Express, library, campus offices, and academic departments. Permission to begin working is given only to students who are registered for summer quarter or who have been accepted and preregistered for a minimum of 12 credit hours fall quarter.

Regulations require that all employees hired present **original** documents that establish both their identity and eligibility to work. All students wishing to work on the Walla Walla University campus are required to present documents **before** they will be authorized to begin work. For more information, contact the Student Employment Office, 509-527-2357 or 800-656-2357.

All students who work on campus during the summer are required to sign a Summer Worker Agreement at the Student Employment Office by **June 23, 2014**. Student employees who rent from the university, either residence hall or university housing, must pay any previous balance owing on their accounts and make arrangements for payment of summer rent by June 23. They may either pay their summer rent in advance or agree to a payroll deduction of at least 75% of their wages to cover their rent, cafeteria, and other charges as they occur, and to save for fall quarter expenses. If charges exceed the payroll deduction, students are responsible for paying their account promptly when billed. Students with unusual situations may consult a financial counselor about a possible reduction in their payroll deduction.

Student summer employees who do not rent housing from the university are encouraged to voluntarily sign up for a payroll deduction of at least 35% to save for fall quarter expenses.

## Financial Aid

Students who need assistance for summer quarter may apply for financial aid. Some students may be eligible for a Federal Pell Grant. Loans may be available, such as Federal Direct Loans.

Students who wish to be considered for federal grants and loans will want to submit their 2013-14 FAFSA (Free Application for Federal Student Aid) online at [fafsa.ed.gov](http://fafsa.ed.gov) by **April 15, 2014**. The FAFSA must be received by the federal processor by June 30, 2014. **The federal government will not grant exceptions to this deadline.** A student cannot be considered for the Federal Pell Grant or the Federal Direct Loan if this deadline is missed.

A completed Financial Aid file contains:

1. Correct ISIR (Institutional Student Information Record). The ISIR is generated by the federal processor after a FAFSA is submitted. Students who list Walla Walla University (code 003799) on their FAFSA will have their ISIR electronically sent to Walla Walla University by the federal processor. Students who did not list Walla Walla University on their FAFSA will need to add WWU's code (003799) to their FAFSA.
2. Walla Walla University Financial Aid Application (FAA). This application may be submitted online at [sfs.wallawalla.edu/application](http://sfs.wallawalla.edu/application).
3. Proof of high school completion (final transcript or letter of verification).
4. Additional documentation, if needed, for verification purposes.

Only financial aid that has been awarded by registration time may be deducted from the estimated costs. Students eligible for federal financial aid must be **registered for classes by June 30**. Students who register or add classes after that date cannot receive federal financial aid for those classes.

Students who are on a waiting list or waiting for a letter of acceptance should complete the financial aid applications. Aid is not awarded until students receive their acceptance into Walla Walla University. However, if a student moves off the waiting list at the last moment, it is to the student's advantage to have the financial aid application already completed.

# Online Courses

Students taking online or hybrid courses must have basic computer competency, including use of e-mail and regular internet access. Information on minimum computer hardware requirements is available at the Equipment link on the distance learning website: [wallawalla.edu/academics/distance-learning-d2l](http://wallawalla.edu/academics/distance-learning-d2l).

The regular tuition rate applies for all online and hybrid courses (see page 8). Summer Advantage students pay the Summer Advantage rate for online courses (see page 12). Online courses begin on June 23 and end on August 15 unless otherwise indicated. Course enrollment minimums and maximums apply.

## Registration

Students may register for online or hybrid courses as indicated below. For further information, see the "How to Register" link at [wallawalla.edu/academics/distance-learning-d2l](http://wallawalla.edu/academics/distance-learning-d2l).

- Currently enrolled Walla Walla University students register online through myWWU beginning April 21 and must arrange financial clearance by 4 p.m. on June 23.
- Summer Advantage students register through the Academic Advisement Office, 800-558-2132 or <betty.duncan@wallawalla.edu> and must arrange financial clearance by 4 p.m. on June 23.
- North Pacific Union Conference K-12 teachers register online for all courses, including online or hybrid courses, at [summer.wallawalla.edu/k-12](http://summer.wallawalla.edu/k-12).
- Guest students taking courses for transfer to other institutions (not seeking a degree at Walla Walla University) register by completing a registration form and credit card information online at [wallawalla.edu/academics/distance-learning-d2l](http://wallawalla.edu/academics/distance-learning-d2l), or in person at the Academic Records Office.

Financial clearance is required for all students. Students who register for classes but do not obtain financial clearance by 4 p.m. on June 23 will be automatically dropped from all summer courses (see pages 6 and 8).

## Online General Studies Courses

The following general studies courses are offered in an online format. Dates are June 23–August 15 unless otherwise indicated. Students should consult their academic advisers in determining which courses will satisfy their needed requirements; while each of these courses is applicable to general studies requirements in the area indicated, credit minimums and maximums also apply within each general studies area.

Prefix/Course#	Title	Cr.	Instructor	Instructor's E-mail Address
<b>HEALTH:</b>				
HLTH 110	Wellness for Living	3	Eric Denney	<eric.denney@wallawalla.edu>
<i>Dates for HLTH 110: June 23–August 1</i>				
<b>SOCIAL SCIENCE:</b>				
ANTH 225	Cultural Anthropology	4	Janet Ockerman	<janet.ockerman@wallawalla.edu>
PLSC 224	American Government	4	Montgomery Buell	<montgomery.buell@wallawalla.edu>
PSYC 130	General Psychology	4	Julian Melgosa	<julian.melgosa@wallawalla.edu>
<i>Dates for PSYC 130: June 23–August 1</i>				
<b>HUMANITIES:</b>				
ENGL 214	Themes in Lit: The Trojan War	4	Beverly Beem	<beverly.beem@wallawalla.edu>
MUHL 124	Introduction to Music	4	Lyn Ritz	<lyn.ritz@wallawalla.edu>
PHIL 410	Philosophy of Education	3	Debbie Muthersbaugh	<debbie.muthersbaugh@wallawalla.edu>
<i>Dates for PHIL 410: June 23–August 1</i>				
<b>LANGUAGE ARTS:</b>				
ENGL 323	Writing for Engineers	3	Sylvia Nosworthy & Melodie Selby	<sylvia.nosworthy@wallawalla.edu> <melodie.selby@wallawalla.edu>
<b>MATHEMATICS:</b>				
MATH 206	Applied Statistics	4	Jonathan Duncan	<jonathan.duncan@wallawalla.edu>
<b>RELIGION AND THEOLOGY:</b>				
RELB 462	Paul and the Gospel	4	Carl Cosaert	<carl.cosaert@wallawalla.edu>
RELT 202	Christian Beliefs	4	Carl Cosaert	<carl.cosaert@wallawalla.edu>
RELT 417	Inspiration & Revelation	3	Dave Thomas	<dave.thomas@wallawalla.edu>

## Other Online & Hybrid Courses

Prefix/Course#	Title	Cr.	Instructor	Instructor's E-mail Address
<b>BUSINESS</b> <i>(Dates: June 23–August 15)</i>				
MKTG 381	Principles of Marketing	4	Conna Bond	<conna.bond@wallawalla.edu>
<b>EDUCATION &amp; PSYCHOLOGY</b> <i>(Dates: June 23–August 1 unless otherwise indicated)</i>				
EDAD 526	School Finance	3	Brian Harris	<brian.harris@wallawalla.edu>
EDAD 545	Principalship, K-12	4	John Deming	<john.deming@wallawalla.edu>
<i>Hybrid course: Includes instruction on campus June 23–July 3</i>				
EDCI 560	Elem C&I: Reading–Language Arts I	3	Tamara Randolph	<tamara.randolph@wallawalla.edu>
<i>Dates for EDCI 560: June 23–July 11</i>				
EDCI 561	Elem C&I: Reading–Language Arts II	3	Tamara Randolph	<tamara.randolph@wallawalla.edu>
<i>Dates for EDCI 561: July 14–August 1</i>				
EDCI 565	Instructional Methodology	3	Debbie Muthersbaugh	
EDCI 567	Instructional Methodology Practicum	1		<debbie.muthersbaugh@wallawalla.edu>
EDUC 360	Elem C&I: Reading–Language Arts I	3	Tamara Randolph	<tamara.randolph@wallawalla.edu>
<i>Dates for EDUC 360: June 23–July 11</i>				
EDUC 361	Elem C&I: Reading–Language Arts II	3	Tamara Randolph	<tamara.randolph@wallawalla.edu>
<i>Dates for EDUC 361: July 14–August 1</i>				
EDUC 365	Instructional Methodology	3	Debbie Muthersbaugh	
EDUC 367	Instructional Methodology Practicum	1		<debbie.muthersbaugh@wallawalla.edu>
EDUC 410	Philosophy of Education	3	Debbie Muthersbaugh	
				<debbie.muthersbaugh@wallawalla.edu>
EDUC 475	Teaching Reading Skills in the Content Areas	3	Tamara Randolph	<tamara.randolph@wallawalla.edu>
EDUC 492	Education of the Gifted	3	<i>Tentative; updated information at <a href="http://summer.wallawalla.edu">summer.wallawalla.edu</a></i>	
EDUC 506	Perspectives on School & Community	3	Janet Ockerman	<janet.ockerman@wallawalla.edu>
EDUC 522	Philosophy & Education	3	Debbie Muthersbaugh	
				<debbie.muthersbaugh@wallawalla.edu>
EDUC 525	Advanced Technology Tools	2	Rudy Scott	<rudy.scott@wallawalla.edu>
EDUC 533	Literature-based Reading Instruction	3	Lori Kissinger	<lori.kissinger@wallawalla.edu>
EDUC 535	Reading Diagnosis & Remediation	3	Tamara Randolph	<tamara.randolph@wallawalla.edu>
EDUC 550	Understanding Research	3	Debbie Muthersbaugh	
				<debbie.muthersbaugh@wallawalla.edu>
EDUC 551	Action Research	3	Denise Dunzweiler	<denise.dunzweiler@wallawalla.edu>
<i>Hybrid course: Includes instruction on campus June 23–July 2</i>				
EDUC 556	Curriculum Planning	3	Robert Egbert	<robert.egbert@wallawalla.edu>
<i>Hybrid course: Includes instruction on campus June 23–July 3</i>				
PSYC 215	Child & Adolescent Development	4	Linda Ivy	<linda.ivy@wallawalla.edu>
<i>Dates for PSYC 215: June 23–August 15</i>				
PSYC 489	Career Counseling Theories	3	Linda Ivy	<linda.ivy@wallawalla.edu>
<i>Dates for PSYC 489: August 4–August 29</i>				
PSYC 506	Advanced Human Development	3	Linda Ivy	<linda.ivy@wallawalla.edu>
PSYC 521	Psychology of Learning	3	Austin Archer	<austin.archer@wallawalla.edu>
SPED 492	Education of the Gifted	3	<i>Tentative; updated information at <a href="http://summer.wallawalla.edu">summer.wallawalla.edu</a></i>	
SPED 535	Reading Diagnosis & Remediation	3	Tamara Randolph	<tamara.randolph@wallawalla.edu>
<b>ENGLISH</b> <i>(Dates: June 23–August 1)</i>				
ENGL 375	Literature for Young Adults	3	Sylvia Nosworthy	<sylvia.nosworthy@wallawalla.edu>
ENGL 575	Literature for Young Adults	3	Sylvia Nosworthy	<sylvia.nosworthy@wallawalla.edu>
<b>SOCIAL WORK</b> <i>(Dates: June 23–August 15 unless otherwise indicated)</i>				
SOWK 508W	Social Work, Religion, & Spirituality	3	Jim Boyd	<jim.boyd@wallawalla.edu>
SOWK 510W	Privilege & Oppression	3	Kevin Grussling	<kevin.grussling@wallawalla.edu>
SOWK 540W	Advanced Clinical Evaluation	3	Nancy Peters	<nancy.peters@wallawalla.edu>
SOWK 548W	Comparative Theories in Social Work Practice	3	Heather Vonderfecht	
				<heather.vonderfecht@wallawalla.edu>
<i>Dates for SOWK 548W: June 23–August 1</i>				
SOWK 549W	Attachment Theory Thru Life Span	3	Jim Boyd	<jim.boyd@wallawalla.edu>
SOWK 567W	Selfcare for Social Workers	3	Pamela Bing Perry	<pamela.bingperry@wallawalla.edu>
SOWK 585W	Topics in Clinical Social Work: Career Development	3	Lisa Koble	<lisa.koble@wallawalla.edu>

# Summer Advantage Program

Summer Advantage is open to any undergraduate student who has not taken any classes at Walla Walla University since completion of high school or academy. A Summer Advantage student may take up to 12 credits online and/or on the College Place campus, except certain courses that consist of individual instruction. A student in this program receives a discounted summer tuition rate. Here's what a Summer Advantage student saves:

## Summer Advantage Tuition Savings

	Per Credit	Full Load (12 credits)
Regular tuition rate	\$648	\$7,776
Summer Advantage tuition rate (discounted 40 percent)	\$389	\$4,668
Amount saved by Summer Advantage students	\$259	\$3,108

## Additional Costs

- Deposit (\$50; not refundable after June 6)
- Residence hall rent: Summer Advantage students taking courses on the College Place campus must live in the residence hall if their permanent address is outside the Walla Walla Valley (\$107-112 per week)
- Meals: weekday noon meals are available at the cafeteria; students may also charge meals or food items at The Express mini-mart (see page 8) (approximately \$70-\$95 per week)
- Textbooks (approximately \$325-\$375)
- Health insurance; waived if proof of other coverage is provided to Campus Health & Wellness (\$539)
- Course fees if applicable (Music lessons and a few other courses have additional fees; see page 8.)
- Miscellaneous expenses

All tuition, fees, and housing costs are due at registration (see page 8). Other charges are due when billed. Visa, MasterCard, and Discover are accepted. Online financial clearance is required **by 4 p.m. on June 23** (see page 6); financial clearance may be arranged after June 4 through a student's myWWU account or through Student Financial Services, 509-527-2815 or 800-656-2815 or <stufin@wallawalla.edu>.

Some job opportunities are available on campus for students who wish to work (see page 9). Advance arrangements are recommended, as job opportunities are limited. For a summer student taking a full academic load, a reasonable work load is 8-10 hours per week.

## Application Process

Students interested in the Summer Advantage program should follow the usual application procedure for admission to Walla Walla University and indicate their interest in the Summer Advantage program on the application. (See page 6 for admission information.) After being accepted to the university, a student may reserve a place in the Summer Advantage program with a \$50 deposit at [summer.wallawalla.edu/advantage](http://summer.wallawalla.edu/advantage). The reservation and deposit should be submitted by June 6, as enrollment is limited. In the event of cancellation by June 6, the deposit is refundable. The Summer Session Office will notify the student regarding acceptance into the program.

## Summer Advantage Checklist

In summary, a Summer Advantage student must:

- ✓ Have taken no credits at Walla Walla University since completion of high school or academy
- ✓ Meet the Walla Walla University admission requirements and be admitted to the university as a regular online or College Place student
- ✓ Reserve a place in Summer Advantage with a \$50 deposit by June 6
- ✓ Pay the tuition, class fees (if any), and housing costs at registration, plus other charges when billed
- ✓ Complete online financial clearance through myWWU by 4 p.m. on June 23
- ✓ Live in a university residence hall while taking courses on the College Place campus, if the student's permanent address is outside the Walla Walla Valley

# Study Tours

The following off-campus courses are available in the summer of 2014. Students interested in tours are encouraged to apply early to the tour director, as enrollments are limited. Financial clearance and registration must be arranged in advance of the tour. All overseas tour plans and itineraries will be subject to up-to-date travel warnings from government agencies.

## UK History and Literature Tour

Travel dates: June 23–July 13, 2014 Cost: \$5,180 plus airfare

Directors: Dr. Kellie Bond and Dr. Gregory Dodds

Course dates are June 23–August 15, beginning with advance assignments before the tour begins and allowing for completion of coursework afterward. Students will travel to several locations in England and may earn up to eight credits of lower and/or upper division credit in English and/or History. ENGL 274 and ENGL 474 count toward the general studies humanities requirement; HIST 274 and HIST 474 count toward the general studies history requirement. For further information, contact Dr. Kellie Bond, e-mail <kellie.bond@wallawalla.edu>, or Dr. Gregory Dodds, e-mail <gregory.dodds@wallawalla.edu>. Students should register for two of the following courses:

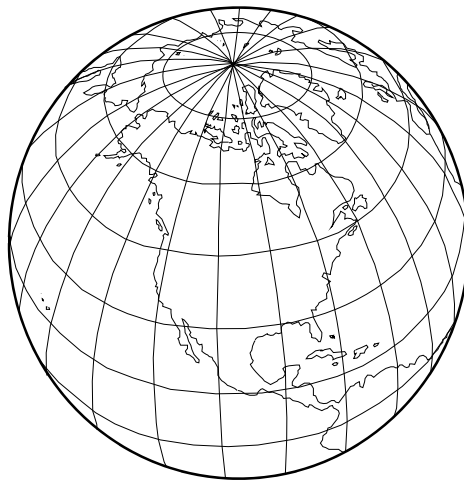
ENGL 274	Study Tour: British Literature in Context	4	Bond
ENGL 474	Study Tour: British Gothic Literature	4	Bond
HIST 274	Study Tour: English History in Context	4	Dodds
HIST 474	Study Tour: English Reformation	4	Dodds

## Madaba Plains Archaeological Project

Dates: June 25–July 30, 2014 Cost: Contact director regarding package plans

Director: Dr. Douglas Clark <mpp@lasierra.edu> (\$2,350 plus travel if credit is not desired)

Walla Walla University is a consortium participant in the Madaba Plains Project excavations at Tall al-'Umayri in Jordan. Academic credit in history and religion is offered through La Sierra University. There are multiple deadlines for participation in these excavations, beginning on March 1. For further information, see [madabaplains.org/umayri/information.htm](http://madabaplains.org/umayri/information.htm) or contact Dr. Douglas Clark, <mpp@lasierra.edu>. WWU students desiring academic credit should complete a transfer course approval request form at the Academic Records Office before registering for appropriate courses through La Sierra University.



# Rosario Beach Marine Laboratory

June 24 – August 14

## Application Process

Students planning to enroll at the Rosario Beach Marine Laboratory must apply online at [rosario.wallawalla.edu](http://rosario.wallawalla.edu). A \$40 non-refundable fee is required at the time of application. Limited facilities at Rosario necessitate restricted enrollments in most classes; consequently, application does not guarantee acceptance. Early submission of application form and fee will increase the probability of acceptance.

## Tuition and Lab Fees

Undergraduate tuition for the summer quarter is \$648 per quarter hour; graduate tuition is \$560 per quarter hour. Students registered for General Biology are charged for 12 quarter hours plus a lab fee of \$120. Undergraduate students registered for one or two upper-division (400+) or graduate (500+) courses are charged for 10 quarter hours plus a lab fee of \$400. Affiliate students pay tuition and lab fees directly to the school in which they are enrolled. The Summer Advantage program is not applicable to courses at Rosario.

## Meals and Housing

All residents of single-student accommodations are charged a flat rate of \$920 for meals for the summer session. Housing charges are as follows:

Single-student accommodations	\$715
Student/family accommodations	\$1,045

## Insurance

All Rosario students must provide proof of health insurance coverage. Registered, tuition-paying Walla Walla University students are covered by a Student Accident Insurance policy.

## Financial Arrangements

Financial arrangements must be made prior to arrival at Rosario. Contact Carolyn Janke, Student Financial Services, 509-527-2815 or 800-656-2815; <stufin@wallawalla.edu>.

## Registration and Textbooks

Registration for classes will be held at Rosario on Tuesday, June 24, at 6:30 p.m. Financial arrangements must be made prior to arrival. Books will be available for purchase at the marine laboratory. Estimated textbook cost is approximately \$300-\$350.

## Courses Offered

Upper-division and graduate courses are offered in two blocks. Block A classes meet the first half of each week, and Block B classes meet the last half of each week; thus, students may register for only one course in each block. Students taking General Biology may not register for upper-division or graduate courses.

### Block A

BIOL 403	Ornithology (Watkins)
BIOL 417/517	*Behavior of Marine Organisms (Galusha)

### Block B

BIOL 400	Topics: Cancer Biology (Lindsey)
BIOL 475/575	*Marine Invertebrates (Cowles)

### Block AB

BIOL 141, 142, 143	General Biology (Banks)
--------------------	-------------------------

\*Marine-oriented course

# Short-term Courses

(For complete information about days and times, consult the Class Schedule on pages 17-21.)

## June 23 – June 27

EDUC 495	Colloquium: Child Abuse (0)	Long
----------	-----------------------------	------

## June 23 – July 2/3

EDAD 545	Principalship, K-12 (4) <i>(plus online instruction until August 1)</i>	Deming
EDCI 581/EDUC 381	Elementary Curriculum & Instruction: Religion (2)	Egbert
EDUC 515	Classroom Technology Tools (2)	Moor
EDUC 551	Action Research (3) <i>(plus online instruction until August 1)</i>	Dunzweiler
EDUC 556	Curriculum Planning (3) <i>(plus online instruction until August 1)</i>	Egbert
PHOTO 456	Digital Photography & Imaging for Educators (2)	Bergherm

## June 23 – July 8

SPAN 101	Elementary Spanish (4)	Alfaro
----------	------------------------	--------

## June 23/24 – July 10/11

CHEM 141	General Chemistry (3)	Smith
CHEM 144	General Chemistry Lab (1)	Lee
COMM 474	Workshop: Filmmakers Bootcamp (5)	Townsend
EDCI 560/EDUC 360	Elementary C&I: Reading & Language Arts I (3) <i>(Online)</i>	Randolph
EDUC/PSYC 501	Statistics in Research (3)	Melgosa
EDUC/PSYC 502	Statistics Lab (1)	Archer
WRIT 589	Writing Theory (3)	Fritze

## June 23 – July 13 (UK History and Literature Tour travel dates)

ENGL 274	Study Tour: British Literature in Context (4)	Bond
ENGL 474	Study Tour: British Gothic Literature (4)	Bond
HIST 274	Study Tour: English History in Context (4)	Dodds
HIST 474	Study Tour: English Reformation (4)	Dodds

## June 23 – July 17/18

PEAC 123	Circuit Weight Training (1)	Denney, M
RELB 301	Old Testament History (3)	Thompson

## June 23 – July 25

NRSB 211	Fundamentals of Nursing (4) <i>(Portland)</i>	Vigil
----------	---	-------

## June 23 – July 28 (Mondays)

PSYC 518	Group Counseling (3)	Stough
PSYC 524	Counseling Diverse Populations (3)	Archer

## June 23 – July 31

FILM 215	Introduction to Film Literature (4)	Jolliffe
FILM 416	Teaching With Film Literature (4)	Jolliffe

## June 23 – August 1 (Online)

EDAD 526	School Finance (3) <i>(Online)</i>	Harris
EDCI 565/EDUC 365	Instructional Methodology (3) <i>(Online)</i>	Muthersbaugh
EDCI 567/EDUC 367	Instructional Methodology Practicum (1) <i>(Online)</i>	Muthersbaugh
EDUC/PHIL 410	Philosophy of Education (3) <i>(Online)</i>	Muthersbaugh
EDUC 475	Teaching Reading Skills in the Content Areas (3) <i>(Online)</i>	Randolph
EDUC/SPED 492	Education of the Gifted (3) <i>(Online)</i>	Staff
	<i>EDUC/SPED 492 tentative; see <a href="http://summer.wallawalla.edu">summer.wallawalla.edu</a> for updated information</i>	
EDUC 506	Perspectives on School & Community (3) <i>(Online)</i>	Ockerman
EDUC 522	Philosophy & Education (3) <i>(Online)</i>	Muthersbaugh
EDUC 525	Advanced Technology Tools (2) <i>(Online)</i>	Scott
EDUC 533	Literature-based Reading Instruction (3) <i>(Online)</i>	Kissinger
EDUC/SPED 535	Reading Diagnosis & Remediation (3) <i>(Online)</i>	Randolph
EDUC 550	Understanding Research (3) <i>(Online)</i>	Muthersbaugh

*June 23-August 1 online courses continued on next page*

**June 23 – August 1, continued (Online)**

PSYC 130	General Psychology (4) <i>(Online)</i>	Melgosa
PSYC 506	Advanced Human Development (3) <i>(Online)</i>	Ivy
PSYC 521	Psychology of Learning (3) <i>(Online)</i>	Archer
ENGL 375/575	Literature for Young Adults (3) <i>(Online)</i>	Nosworthy
HLTH 110	Wellness for Living (3) <i>(Online)</i>	Denney, E
SOWK 548W	Comparative Theories of Social Work Practice (3) <i>(Online)</i>	Vonderfecht

**June 23 – August 4 (Mondays)**

SOWK 558	Cognitive and Behavioral Therapy (3)	Vonderfecht
----------	--------------------------------------	-------------

**June 25 – July 11**

BIOL 141	General Biology (4) <i>(Rosario)</i>	Banks
----------	--------------------------------------	-------

**June 30 – July 18**

PETH 473	Teaching Elementary Health & Physical Education (3)	Denney, M
----------	---	-----------

**July 1 – July 2**

SOWK 205A	Mental Health First Aid (1)	Smith/Tillotson
-----------	-----------------------------	-----------------

**July 7 – July 18**

ART 395	Methods of Teaching Art (2)	Libby
---------	-----------------------------	-------

**July 7– August 29**

AVIA 142-480	Aviation flight courses	Duffy
--------------	-------------------------	-------

**July 9 – July 28**

SPAN 102	Elementary Spanish (4)	Alfaro
----------	------------------------	--------

**July 14 – July 17**

CEDU 474	Wksp: Computational Thinking in the Middle School Classroom (1)	Duncan
----------	---	--------

**July 14 – July 29**

BIOL 142	General Biology (4) <i>(Rosario)</i>	Banks
----------	--------------------------------------	-------

**July 14 – July 31/August 1**

CHEM 142	General Chemistry (3)	Smith
CHEM 145	General Chemistry Lab (1)	Lee
EDCI 561/EDUC 361	Elementary C&I: Reading & Language Arts II (3) <i>(Online)</i>	Randolph
RELH 457	History of Adventism (3)	Maynard-Reid

**July 21 – August 15**

RELB 304	Hebrew Prophets (4)	Regalado
----------	---------------------	----------

**July 28 – August 29**

NRSG 212	Health Assessment & the Nursing Process (4) <i>(Portland)</i>	Tetz
----------	---	------

**July 29/30 – August 14**

BIOL 143	General Biology (4) <i>(Rosario)</i>	Banks
SPAN 103	Elementary Spanish (4)	Alfaro

**August 4 – August 5**

SOWK 205B	Mental Health First Aid (1)	Smith/Tillotson
-----------	-----------------------------	-----------------

**August 4 – August 21/22**

CHEM 143	General Chemistry (3)	Smith
CHEM 146	General Chemistry Lab (1)	Lee

**August 4 – August 29**

PSYC 489	Career Counseling Theories (3) <i>(Online)</i>	Ivy
----------	--	-----



# Class Schedule

For ISBNs and retail price information on textbooks for each course, see [wallawalla.bncollege.com](http://wallawalla.bncollege.com)

## ART

Class No.	Prefix	Course No.	Course Title	Cr.	Time	Days	Dates	Location	Instructor
1005	ART	194	Intro to Painting I	2	1:00- 2:50P	MW	6/23-8/13	FAC214	Libby
(ART 195, 196, 334, 335, 336 are also available at the above time)							(Additional hour to be arranged)		
1006	ART	251	Intro to Art	4	10:00-10:50A	MTWRF	6/23-8/15	FAC208	Libby
1007	ART	395	✓Meth of Teaching Art	2	3:00- 4:50P	MTWRF	7/7-7/18	FAC223	Libby
(Fee: \$20)									

## BIOLOGICAL SCIENCES

Class No.	Prefix	Course No.	Course Title	Cr.	Time	Days	Dates	Location	Instructor
TBA	BIOL	316	Intro to Biol Research II	1-2	Arranged	Arranged	6/23-8/29	Arranged	See myWWU
TBA	BIOL	416	Research in Biology	1-4	Arranged	Arranged	6/23-8/29	Arranged	See myWWU
TBA	BIOL	501	Research in Biology	2-4	Arranged	Arranged	6/23-8/29	Arranged	See myWWU
TBA	BIOL	544	Thesis Proposal	2	Arranged	Arranged	6/23-8/29	Arranged	See myWWU
TBA	BIOL	545	Thesis Research	1-8	Arranged	Arranged	6/23-8/29	Arranged	See myWWU
TBA	BIOL	546	Thesis	2	Arranged	Arranged	6/23-8/29	Arranged	See myWWU

### OFFERED AT ROSARIO BEACH MARINE LABORATORY:

(See page 14 for Rosario lab fees.)

1008	BIOL	141	† General Biology (Limit 24)	4	Block AB	6/25-7/11	Rosario	Banks
1009	BIOL	142	† General Biology (Limit 24)	4	Block AB	7/14-7/29	Rosario	Banks
1010	BIOL	143	† General Biology (Limit 24)	4	Block AB	7/30-8/14	Rosario	Banks
1011	BIOL	400	Tpcs: Cancer Biology (Limit 12)	5	Block B	6/25-8/14	Rosario	Lindsey
1012	BIOL	403	Ornithology (Limit 15)	5	Block A	6/25-8/14	Rosario	Watkins
1013	BIOL	417	Behav Marine Organisms (Limit *)	5	Block A	6/25-8/14	Rosario	Galusha
1014	BIOL	475	Marine Invertebrates (Limit *)	5	Block B	6/25-8/14	Rosario	Cowles
1015	BIOL	517	Behav Marine Organisms (Limit *)	5	Block A	6/25-8/14	Rosario	Galusha
1182	BIOL	575	Marine Invertebrates (Limit *)	5	Block B	6/25-8/14	Rosario	Cowles

(\*Limit 16 total in BIOL 417 & BIOL 517; limit 16 total in BIOL 475 & BIOL 575)

## BUSINESS

Class No.	Prefix	Course No.	Course Title	Cr.	Time	Days	Dates	Location	Instructor
1017	GBUS	495	Colloquium	0	Arranged	Arranged	6/23-8/15	Arranged	Montes
1183	MKTG	381	Prin of Marketing	4	Online—see pages 10-11		6/23-8/15	Arranged	Bond

## CHEMISTRY

Class No.	Prefix	Course No.	Course Title	Cr.	Time	Days	Dates	Location	Instructor
1018	CHEM	141	† General Chemistry	3	10:00-11:50A	MTWRF	6/23-7/11	RGH182	Smith
1019	CHEM	142	† General Chemistry	3	10:00-11:50A	MTWRF	7/14-8/1	RGH182	Smith
1021	CHEM	143	† General Chemistry	3	10:00-11:50A	MTWRF	8/4-8/22	RGH182	Smith
1022	CHEM	144	† General Chemistry Lab	1	1:00-3:50P	MTWR	6/23-7/10	RGH 226	Lee
1023	CHEM	145	† General Chemistry Lab	1	1:00-3:50P	MTWR	7/14-7/31	RGH 226	Lee
1024	CHEM	146	† General Chemistry Lab	1	1:00-3:50P	MTWR	8/4-8/21	RGH 226	Lee

(Fees: \$30 each for CHEM 144, 145, 146)

## COMMUNICATIONS AND LANGUAGES

Class No.	Prefix	Course No.	Course Title	Cr.	Time	Days	Dates	Location	Instructor
1025	COMM	445	Dir Media Production	1-4	Arranged	Arranged	6/23-8/15	Arranged	Hartman
1176	COMM	474	Wksp: Filmmaker Bootcmp	5	8:00A-12:00	MTWRF	6/23-7/11	CTC 121	Townsend
			Limit: 7		1:00-5:00P	MTWRF	Also meets 7/12 beginning at 9:00P		
					7:00-9:00P	MTWR			

**IMPORTANT:** See course description on page 22 for COMM 474 admission requirements. Application deadline is **May 19.**

1026	COMM	494	Co-op Ed/Prac Ms Media	0-4	Arranged	Arranged	6/23-8/15	Arranged	Hartman
1028	SPAN	101	† Elem Spanish	4	8:00-11:50A	MTWR	6/23-7/8	KRH 210	Alfaro
1029	SPAN	102	† Elem Spanish	4	8:00-11:50A	MTWR	7/9-7/28	KRH 210	Alfaro
1030	SPAN	103	† Elem Spanish	4	8:00-11:50A	MTWR	7/29-8/14	KRH 210	Alfaro
1031	SPCH	101	† Fund Speech Comm	4	11:00-11:50A	MTWRF	6/23-8/15	CTC305	Crawford

† General studies course

✓ Course of interest to K-12 teachers

Schedule subject to change; for latest updates, see [classopen.wallawalla.edu](http://classopen.wallawalla.edu)

All courses are offered contingent on adequate enrollment

## COMPUTER SCIENCE

Class		Course		Cr.	Time	Days	Dates	Location	Instructor
No.	Prefix	No.	Course Title						
1178	CEDU	474	✓ Wksp: Computational Think in Middle School Clsrm Limit: 15	1	9:00A-12:00 1:00-4:15P	MTWR	7/14-7/17	KRH215	Duncan

## EDUCATION AND PSYCHOLOGY

Class		Course		Cr.	Time	Days	Dates	Location	Instructor
No.	Prefix	No.	Course Title						
1032	EDAD	526	School Finance	3	Online—see pages 10-11		6/23-8/1	Arranged	Harris
1033	EDAD	545	Principalship, K-12 <i>Instruction on campus:</i>	4	Hybrid incl online assignmts 3:30-6:00P	MTWR	6/23-8/1 6/23-7/3	Arranged RGH178	Deming
1034	EDAD	565	Practicum in Admin	4	Arranged	Arranged	6/23-8/15	Arranged	Dunzweiler
1035	EDAD	575	Readings:	2-4	Arranged	Arranged	6/23-8/15	Arranged	Dunzweiler
1036	EDCI	560	Elem C&I: Read/Lng Arts I	3	Online—see pages 10-11		6/23-7/11	Arranged	Randolph
1037	EDCI	561	Elem C&I: Read/Lng Arts II	3	Online—see pages 10-11		7/14-8/1	Arranged	Randolph
1038	EDCI	565	Instructional Methodology	3	Online—see pages 10-11		6/23-8/1	Arranged	Muthersbaugh
1039	EDCI	567	Instr Methodology Pract	1	Online—see pages 10-11		6/23-8/1	Arranged	Muthersbaugh
1040	EDCI	581	Elem C&I: Religion	2	4:00-6:30P	MTWR	6/23-7/3	RGH220	Egbert
1041	EDUC	360	Elem C&I: Read/Lng Arts I	3	Online—see pages 10-11		6/23-7/11	Arranged	Randolph
1042	EDUC	361	Elem C&I: Read/Lng Arts II	3	Online—see pages 10-11		7/14-8/1	Arranged	Randolph
1043	EDUC	365	Instructional Methodology	3	Online—see pages 10-11		6/23-8/1	Arranged	Muthersbaugh
1044	EDUC	367	Instr Methodology Pract	1	Online—see pages 10-11		6/23-8/1	Arranged	Muthersbaugh
1045	EDUC	381	Elem C&I: Religion	2	4:00-6:30P	MTWR	6/23-7/3	RGH220	Egbert
1046	EDUC	410	† Philosophy of Education	3	Online—see pages 10-11		6/23-8/1	Arranged	Muthersbaugh
1047	EDUC	475	Tch Rdg Skls Contnt Area	3	Online—see pages 10-11		6/23-8/1	Arranged	Randolph
1048	EDUC	492	Educ of the Gifted	3	<i>Tentative; see <a href="http://summer.wallawalla.edu">summer.wallawalla.edu</a> for updated information</i>				
1049	EDUC	495	Colloquium: Child Abuse (Fee: \$100)	0	9:00-10:50A	MTWRF	6/23-6/27	RGH220	Long
1050	EDUC	501	Statistics in Research	3	8:00-10:30A	MTWR	6/23-7/10	RGH178	Melgosa
1051	EDUC	502	Statistics Lab	1	10:45A-12:00	TWR	6/24-7/10	RGH050	Archer
1052	EDUC	506	Perspcvls on Schl/Comm	3	Online—see pages 10-11		6/23-8/1	Arranged	Ockerman
1053	EDUC	515	Clsrm Technology Tools (Limit 25)	2	1:00-3:30P	MTWR	6/23-7/3	RGH050	Moor
1055	EDUC	522	Philosophy & Education	3	Online—see pages 10-11		6/23-8/1	Arranged	Muthersbaugh
1054	EDUC	525	Adv Technology Tools (Limit 15)	2	Online—see pages 10-11		6/23-8/1	Arranged	Scott
1056	EDUC	533	Lit-based Reading Instruc	3	Online—see pages 10-11		6/23-8/1	Arranged	Kissinger
1057	EDUC	535	Read Diag/Remediation	3	Online—see pages 10-11		6/23-8/1	Arranged	Randolph
1058	EDUC	550	Understanding Research	3	Online—see pages 10-11		6/23-8/1	Arranged	Muthersbaugh
1059	EDUC	551	Action Research <i>Instruction on campus:</i>	3	Hybrid incl online assignmts 10:00-11:50A	MTWR	6/23-8/1 6/23-7/2	Arranged LibrBrdRm	Dunzweiler
1060	EDUC	556	Curriculum Planning <i>Instruction on campus:</i>	3	Hybrid incl online assignmts 1:00-2:50P	MTWR	6/23-8/1 6/23-7/3	Arranged RGH178	Egbert
1061	EDUC	571	Action Research Lab	1-4	Arranged	Arranged	6/23-8/15	Arranged	Randolph
1062	EDUC	575	Readings:	2-4	Arranged	Arranged	6/23-8/15	Arranged	Staff
TBA	EDUC	579	Dir Research/Project	1-2	Arranged	Arranged	6/23-8/15	Arranged	Staff
1063	EDUC	581	Professional Project	2-6	Arranged	Arranged	6/23-8/15	Arranged	Staff
1064	EDUC	590	Thesis	2-8	Arranged	Arranged	6/23-8/15	Arranged	Staff
1065	PSYC	130	† General Psychology	4	Online—see pages 10-11		6/23-8/1	Arranged	Melgosa
1066	PSYC	215	Child-Adoles Development	4	Online—see pages 10-11		6/23-8/15	Arranged	Ivy
1067	PSYC	489	Career Counseling Theor	3	Online—see pages 10-11		8/4-8/29	Arranged	Ivy
1068	PSYC	501	Statistics in Research	3	8:00-10:30A	MTWR	6/23-7/10	RGH178	Melgosa
1069	PSYC	502	Statistics Lab	1	10:45A-12:00	TWR	6/24-7/10	RGH050	Archer
1070	PSYC	506	Adv Human Development	3	Online—see pages 10-11		6/23-8/1	Arranged	Ivy
1071	PSYC	518	Group Counseling	3	8:00A-1:00P	M	6/23-7/28	RGH205	Stough
1072	PSYC	521	Psychology of Learning	3	Online—see pages 10-11		6/23-8/1	Arranged	Archer
1073	PSYC	524	Couns Diverse Populations	3	2:00-7:00P	M	6/23-7/28	RGH205	Archer
1074	PSYC	567	Internship Counsel Psy	2-12	Arranged	Arranged	6/23-8/15	Arranged	Stough
1075	PSYC	575	Readings:	2-4	Arranged	Arranged	6/23-8/15	Arranged	Staff
1076	PSYC	581	Professional Project	1-4	Arranged	Arranged	6/23-8/15	Arranged	Stough
1077	PSYC	590	Thesis	2-8	Arranged	Arranged	6/23-8/15	Arranged	Stough
1079	SPED	492	Educ of the Gifted	3	<i>Tentative; see <a href="http://summer.wallawalla.edu">summer.wallawalla.edu</a> for updated information</i>				
1078	SPED	535	Read Diag/Remediation	3	Online—see pages 10-11		6/23-8/1	Arranged	Randolph

For other classes of interest to K-12 teachers, look for this symbol ✓ under other department listings: Art, Computer Science, English, Health & Physical Education, Technology, and Theology.

† General studies course

✓ Course of interest to K-12 teachers

*Schedule subject to change; for latest updates, see [classopen.wallawalla.edu](http://classopen.wallawalla.edu)*

*All courses are offered contingent on adequate enrollment*

## ENGINEERING

Class No.	Prefix	Course No.	Course Title	Cr.	Time	Days	Dates	Location	Instructor
1080	ENGR	494	Co-op Educ	0-2	Arranged	Arranged	6/23-8/29	Arranged	Selby

## ENGLISH

Class No.	Prefix	Course No.	Course Title	Cr.	Time	Days	Dates	Location	Instructor
1081	ENGL	214	† Themes-Lit: Trojan War	4	Online—see pages 10-11		6/23-8/15	Arranged	Beem
1082	ENGL	274	† Stdy Tour: Brit Lit in Contxt	4	Arranged	Arranged	6/23-7/13	England	Bond
1083	ENGL	323	† Writing for Engineers (Fee: \$20)	3	Online—see pages 10-11		6/23-8/15	Arranged	Nosworthy/Selby
1084	ENGL	375	✓ Literature for Young Adults	3	Online—see pages 10-11		6/23-8/1	Arranged	Nosworthy
1085	ENGL	474	† Stdy Tour: Brit Gothic Lit	4	Arranged	Arranged	6/23-7/13	England	Bond
1179	ENGL	575	✓ Literature for Young Adults	3	Online—see pages 10-11		6/23-8/1	Arranged	Nosworthy
1086	FILM	215	† Intro to Film Lit Lab (Fee: \$15)	4	1:00-2:15P 2:15-5:00P	MTWR W	6/23-7/31	ADM117	Jolliffe
1087	FILM	416	✓ Teaching With Film Lit Lab (Fee: \$15)	4	1:00-2:15P 2:15-5:00P	MTWR W	6/23-7/31	ADM117	Jolliffe
1184	WRIT	589	✓ Writing Theory	3	1:00-3:30P	MTWR	6/23-7/10	ADM006	Fritze

## HEALTH AND PHYSICAL EDUCATION

Class No.	Prefix	Course No.	Course Title	Cr.	Time	Days	Dates	Location	Instructor
1088	HLTH	110	† ✓ Wellness for Living	3	Online—see pages 10-11		6/23-8/1	Arranged	Denney, E
1089	HLTH	481	Internship-Hlth Science	12	Arranged	Arranged	6/23-8/29	Arranged	Denney, M
1090	PEAC	123	† Circuit Weight Training	1	4:00-4:50P	MTWRF	6/23-7/18	WEC GYM	Denney, M
1091	PETH	473	✓ Tchg Elem Health & PE	3	8:00-9:50A	MTWRF	6/30-7/18	WEC139	Denney, M
1092	PETH	490	Internship-Fitness Mgmt	12	Arranged	Arranged	6/23-8/29	Arranged	Denney, M

## HISTORY AND PHILOSOPHY

Class No.	Prefix	Course No.	Course Title	Cr.	Time	Days	Dates	Location	Instructor
1093	HIST	222	† History of the U.S.	4	4:00-5:05P	MTWR	6/23-8/14	ADM116	Buell
1094	HIST	274	† Stdy Tour: Engl Hist-Cntxt	4	Arranged	Arranged	6/23-7/13	England	Dodds
1095	HIST	474	† Stdy Tour: Engl Refrmation	4	Arranged	Arranged	6/23-7/13	England	Dodds
1096	PHIL	410	† Philosophy of Education	3	Online—see pages 10-11		6/23-8/1	Arranged	Muthersbaugh
1097	PLSC	224	† American Government	4	Online—see pages 10-11		6/23-8/15	Arranged	Buell

## MATHEMATICS

Class No.	Prefix	Course No.	Course Title	Cr.	Time	Days	Dates	Location	Instructor
1098	MATH	181	† Analytic Geom & Calc I	4	10:00-10:50A	MTWRF	6/23-8/15	KRH345	Tiffin
1099	MATH	206	† Applied Statistics	4	Online—see pages 10-11		6/23-8/15	Arranged	Duncan

## MUSIC

Class No.	Prefix	Course No.	Course Title	Cr.	Time	Days	Dates	Location	Instructor
1100	MUHL	124	† Intro to Music	4	Online—see pages 10-11		6/23-8/15	Arranged	Ritz
1101	MUPF	127F	Flute-Private	1-2	Arranged	Arranged	6/23-8/15	FAC	Lewis
1102	MUPF	127P	Piano-Private	1-2	Arranged	Arranged	6/23-8/15	FAC	Vining
1103	MUPF	127V	Voice-Private	1-2	Arranged	Arranged	6/23-8/15	FAC	Janis

*MUPF 217, 227, 237, 317, 427, & 437 are also available in the above applied music lessons.  
(See Music Department for lesson fees.)*

† General studies course

✓ Course of interest to K-12 teachers

*Schedule subject to change; for latest updates, see [classopen.wallawalla.edu](http://classopen.wallawalla.edu)*

*All courses are offered contingent on adequate enrollment*

## NURSING

Class No.	Prefix	Course No.	Course Title	Cr.	Time	Days	Dates	Location	Instructor
<i>Admission to the School of Nursing as a Nursing major is required before enrolling in the following block of courses.</i>									
<b>OFFERED AT PORTLAND CAMPUS:</b>									
1104	NRSG	210	Intro to Nursing	3	Arranged	Arranged	6/23-8/29	Portland	Wagner
1105	NRSG	211	Fundamentals of Nursing Lab (Fee: \$100)	4	Arranged	Arranged	6/23-7/25	Portland	Vigil
1106	NRSG	212	Hlth Assess/Nrsg Process Lab (Fee: \$100)	4	Arranged	Arranged	7/28-8/29	Portland	Tetz
1107	NRSG	213	Pharmacology in Nrsg Lab (Fee: \$100)	4	Arranged	Arranged	6/23-8/29	Portland	Paul
1108	NRSG	494	Co-op Educ	0-4	Arranged	Arranged	6/23-8/29	Portland	Krull

## SOCIAL WORK AND SOCIOLOGY

Class No.	Prefix	Course No.	Course Title	Cr.	Time	Days	Dates	Location	Instructor
1109	SOWK	205A	Mental Health First Aid	1	9:00A-12:00 1:00-4:00P	TW	7/1-7/2	WEC226	Smith/Tillotson
1110	SOWK	205B	Mental Health First Aid	1	9:00A-12:00 1:00-4:00P	MT	8/4-8/5	WEC226	Smith/Tillotson
1111	SOWK	490	Field Practicum	2-12	Arranged	Arranged	6/23-8/15	Arranged	Pollard
1112	SOWK	508	Soc Wk-Relig-Spirituality	3	9:00A-12:15P	M	6/23-8/11	WEC215	Willoughby
1113	SOWK	529	Field Pract-Foundation	2-4	Arranged	Arranged	6/23-8/15	Arranged	Pollard
1114	SOWK	530	Field Pract-Advanced	2-5	Arranged	Arranged	6/23-8/15	Arranged	Pollard
1115	SOWK	532	Clin Trtmt-Persnlty Disord	3	6:00-9:15P	M	6/23-8/11	WEC215	Hankins
1116	SOWK	536	Clin Trtmt of Trauma	3	2:00-5:15P	M	6/23-8/11	WEC215	Willoughby
1117	SOWK	542	Dysfunct Behav Clin SWk	3	2:00-5:15P	M	6/23-8/11	WEC217	Hankins
1118	SOWK	552	Clin Trtmt Childrn/Adolesc	3	6:00-9:15P	M	6/23-8/11	WEC217	Willoughby
1119	SOWK	558	Cognitive & Behav Therapy	3	1:00-5:15P	M	6/23-8/4	WEC225	Vonderfecht
1120	SOWK	575	Clin Prac Crisis Intervntion	3	9:00A-12:15P	M	6/23-8/11	WEC217	Hankins

### ONLINE/DISTANCE LEARNING COURSES:

1121	ANTH	225 †	Cultural Anthropology	4	Online—see pages 10-11	6/23-8/15	Arranged	Ockerman
1122	SOWK	508W	Soc Wk-Relig-Spirituality	3	Online—see pages 10-11	6/23-8/15	All locations	Boyd
1123	SOWK	510W	Privilege & Oppression	3	Online—see pages 10-11	6/23-8/15	All locations	Grussling
1124	SOWK	540W	Adv Clinical Evaluation	3	Online—see pages 10-11	6/23-8/15	Missoula	Peters
1125	SOWK	548W	Compar Theories SW Prac	3	Online—see pages 10-11	6/23-8/1	All locations	Vonderfecht
1126	SOWK	549W	Attachment Thru Life Span	3	Online—see pages 10-11	6/23-8/15	All locations	Boyd
1127	SOWK	567W	Selfcare-Social Workers	3	Online—see pages 10-11	6/23-8/15	All locations	Bing Perry
1128	SOWK	585W	Tpcs Clin SW: Career Dev	3	Online—see pages 10-11	6/23-8/15	All locations	Koble

### OFFERED AT BILLINGS, MONTANA, CAMPUS: *(Also see online courses listed above)*

1129	SOWK	510L	Privilege & Oppression	3	6:00-9:15P	M	6/23-8/11	Billings	Kimball-Hilario
1130	SOWK	529L	Field Pract-Foundation	2-4	9:00-10:00A	M	6/23-8/15	Billings	Kimball-Hilario
1131	SOWK	530L	Field Pract-Advanced	2-5	9:00-10:00A	M	6/23-8/15	Billings	Kimball-Hilario
1132	SOWK	531L	Death & Dying	3	6:00-9:15P	M	6/23-8/11	Billings	Bing Perry
1133	SOWK	535L	Social Gerontology	3	2:00-5:15P	M	6/23-8/11	Billings	Kimball-Hilario
1134	SOWK	558L	Cognitive-Behav Therapy	3	10:00A-1:15P	M	6/23-8/11	Billings	Yazak
1135	SOWK	572L	Clin Trtmt in Mental Health	3	10:00A-1:15P	M	6/23-8/11	Billings	Cimmino
1136	SOWK	573L	Prac/Theor-Clin Group Wk	3	2:00-5:15P	M	6/23-8/11	Billings	Cimmino

### OFFERED AT MISSOULA, MONTANA, CAMPUS: *(Also see online courses listed above)*

1137	SOWK	510M	Privilege & Oppression	3	1:00-4:30P	M	6/23-8/11	Missoula	Grussling
1138	SOWK	529M	Field Pract-Foundation	2-4	12:00-1:00P	M	6/23-8/15	Missoula	Emerson
1139	SOWK	530M	Field Pract-Advanced	2-5	12:00-1:00P	M	6/23-8/15	Missoula	Emerson
1140	SOWK	531M	Death & Dying	3	8:30A-12:00	M	6/23-8/11	Missoula	Place-Allyn
1141	SOWK	536M	Clinical Trtmt of Trauma	3	1:00-4:30P	M	6/23-8/11	Missoula	Peters
1142	SOWK	544M	Policy Analysis /Advocacy	3	8:30A-12:00	M	6/23-8/11	Missoula	Grussling
1143	SOWK	545M	Clinical Trtmt Families II	3	5:30-9:00P	M	6/23-8/11	Missoula	Szalda-Petree
1144	SOWK	556M	Play Therapy	3	5:30-9:00P	M	6/23-8/11	Missoula	Peters
1145	SOWK	557M	Solution-focus Brief Ther	3	8:30A-12:00	M	6/23-8/11	Missoula	Szalda-Petree
1146	SOWK	558M	Cognitive/Behavioral Ther	3	5:30-9:00P	M	6/23-8/11	Missoula	Koble
1147	SOWK	574M	Social Work Supervision	3	1:00-4:30P	M	6/23-8/11	Missoula	Szalda-Petree

† General studies course

✓ Course of interest to K-12 teachers

*Schedule subject to change; for latest updates, see [classopen.wallawalla.edu](http://classopen.wallawalla.edu)*

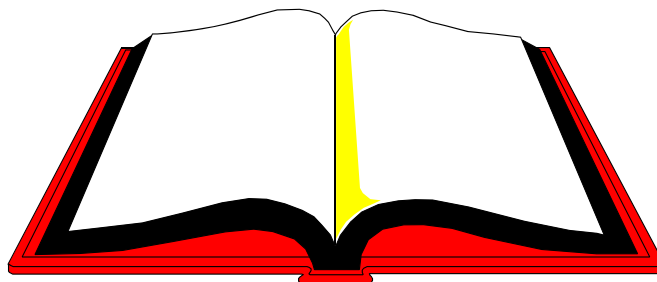
*All courses are offered contingent on adequate enrollment*

## TECHNOLOGY

Class No.	Prefix	Course No.	Course Title	Cr.	Time	Days	Dates	Location	Instructor
<i>Additional fees apply to all flight courses; see 2013-14 WWU Financial Bulletin.</i>									
1148	AVIA	142	Private Pilot Flight Trng	3	Arranged	Arranged	7/7-8/29	Flight Ctr	Duffy
1149	AVIA	143	Adv Private Flight Trng	3	Arranged	Arranged	7/7-8/29	Flight Ctr	Duffy
1150	AVIA	152	Cross-country Flight	2	Arranged	Arranged	7/7-8/29	Flight Ctr	Duffy
1151	AVIA	262	Instrument Flight Trng	3	Arranged	Arranged	7/7-8/29	Flight Ctr	Duffy
1152	AVIA	263	Adv Instrument Flight Trng	3	Arranged	Arranged	7/7-8/29	Flight Ctr	Duffy
1153	AVIA	280	Practicum	1-6	Arranged	Arranged	7/7-8/29	Flight Ctr	Duffy
1154	AVIA	325	Flight Performance	2	Arranged	Arranged	7/7-8/29	Flight Ctr	Duffy
1155	AVIA	335	Commercial Flight Trng	3	Arranged	Arranged	7/7-8/29	Flight Ctr	Duffy
1156	AVIA	336	Adv Comm Flight Training	3	Arranged	Arranged	7/7-8/29	Flight Ctr	Duffy
1157	AVIA	337	Mission/Humntirian Flt Trng	2	Arranged	Arranged	7/7-8/29	Flight Ctr	Duffy
1158	AVIA	340	Multi-engine Flight Trng	3	Arranged	Arranged	7/7-8/29	Flight Ctr	Duffy
1159	AVIA	356	Flight Instructor Training I	3	Arranged	Arranged	7/7-8/29	Flight Ctr	Duffy
1160	AVIA	358	Flight Instructor Training II	3	Arranged	Arranged	7/7-8/29	Flight Ctr	Duffy
1161	AVIA	458	Instrument Instruc Flt Trng	3	Arranged	Arranged	7/7-8/29	Flight Ctr	Duffy
1162	AVIA	460	Multi-eng Instrucr Flt Trng	2	Arranged	Arranged	7/7-8/29	Flight Ctr	Duffy
1163	AVIA	480	Adv Practicum	1-6	Arranged	Arranged	7/7-8/29	Flight Ctr	Duffy
<i>Aviation courses may continue into September by individual arrangement.</i>									
1164	GRPH	480	Adv Practicum	1-6	Arranged	Arranged	6/23-8/29	Arranged	Felipez
1165	PHTO	456	✓ Digital Phto/Imaging-Educ (Fee: \$45) (Limit 12)	2	8:30A-12:00 (Lab time to be arranged)	MTWRF	6/23-7/2	CTC 316	Bergherm
1166	TECH	480	Adv Practicum	1-6	Arranged	Arranged	6/23-8/29	Arranged	Felipez

## THEOLOGY

Class No.	Prefix	Course No.	Course Title	Cr.	Time	Days	Dates	Location	Instructor
1167	RELB	104	† Ministry of Jesus	4	8:50-9:50A	MTWRF	6/23-8/15	ADM117	Fitzgerald
1168	RELB	301	† Old Testament History	3	8:00-9:50A	MTWR	6/23-7/17	ADM116	Thompson
1169	RELB	304	† Hebrew Prophets	4	8:00-9:50A	MTWRF	7/21-8/15	ADM116	Regalado
1170	RELB	462	† Paul & the Gospel	4	Online—see pages 10-11		6/23-8/15	Arranged	Cosaert
1171	RELH	457	†✓History of Adventism	3	10:00-11:50A	MTWRF	7/14-8/1	ADM116	Maynard-Reid
1172	RELP	494	Co-op Educ	0-3	Arranged	Arranged	6/23-8/15	Arranged	Thomas
1173	RELT	202	†✓Christian Beliefs	4	Online—see pages 10-11		6/23-8/15	Arranged	Cosaert
1174	RELT	417	†✓Inspiration & Revelation	3	Online—see pages 10-11		6/23-8/15	Arranged	Thomas



† General studies course

✓ Course of interest to K-12 teachers

*Schedule subject to change; for latest updates, see [classopen.wallawalla.edu](http://classopen.wallawalla.edu)*

*All courses are offered contingent on adequate enrollment*

# Course Descriptions

(The following course descriptions are for courses offered in the summer of 2014 but not listed in the 2013-14 University Bulletin or Graduate Bulletin.)

## Biological Sciences

**BIOL 400 TOPICS: CANCER BIOLOGY** 5  
A study of the molecular, cellular, biochemical, and genetic basis of cancer. Topics will include the cell cycle, growth factors, signal transduction, oncogenes, tumor suppressor genes, angiogenesis, genome integrity, and programmed cell death. Prerequisite: BIOL 141, 142, 143.

**BIOL 575 MARINE INVERTEBRATES** 5  
A study of the biology of selected groups of marine invertebrates. Prerequisite: BIOL 141, 142, 143.

## Communications and Languages

**COMM 474 WORKSHOP: FILMMAKERS BOOT CAMP** 5  
Replicating the long hours and collaborative rigors of industry film work, this intensive three-week video production workshop provides a framework for students to explore and enhance their ability to tell a story using visual imagery. Prerequisite: Nonlinear video editing experience or permission of the instructor. **Admission to this course is competitive. Students must submit an original two-page script to the Communications Department by May 19 to be considered for admission to the course. Limit: 7.**

## Computer Science

**CEDU 474 WORKSHOP: COMPUTATIONAL THINKING IN THE MIDDLE SCHOOL CLASSROOM** 1  
An overview of activities and projects that engage middle school students in computation thinking, both with and without a computer. During the morning sessions participants will participate in games, puzzles, and other projects that teach computer science concepts through active learning. Afternoon sessions focus on implementing these concepts in freely available computer programming environments suitable for middle school students. The goal of this workshop is to give middle school teachers tools that they can use to prepare their students to become creators and not just consumers of technology.

## Education and Psychology

**EDCI 560 ELEMENTARY SCHOOL CURRICULUM AND INSTRUCTION: READING AND LANGUAGE ARTS I** 3  
Defining literacies; reaching all students; assessing as screening, diagnosing, monitoring progress, and outcomes; nurturing early literacy; phonics; and vocabulary building for academic language and language functions. Practicum required. Prerequisite: Admission to Teacher Certificate Program.

**EDCI 561 ELEMENTARY SCHOOL CURRICULUM AND INSTRUCTION: READING AND LANGUAGE ARTS II** 3  
Comprehension theory and strategies; text structures; reading and writing in content areas; study skills; reading information-based and narrative texts; various approaches to teaching reading; interrelationship of writing and reading; creating and managing a literacy program. Practicum required. Prerequisite: EDCI 560.

## Social Work and Sociology

**SOWK 585 TOPICS IN CLINICAL SOCIAL WORK** 3  
An in-depth seminar that focuses on a particular area of clinical social work. Specific subjects will vary from quarter to quarter on topics such as current social work processes and practices, assessment, research theory, social justice, diversity and policy.



# Academic Support Services

## Academic Advisement

Canaday Technology Center, Room 311

The Academic Advisement Office assigns each student an adviser; provides information about academic policy, procedures, resources, class placement, and programs; and monitors students' academic progress. The director of Academic Advisement is also available to assist students with changing majors, course selection, and registration for summer and fall quarters. For these or other related services, visit the Academic Advisement Office, call 509-527-2132 or 800-558-2132, or email <betty.duncan@wallawalla.edu>.

## Career Center

Kretschmar Hall, Room 217

The Career Center assists students with career and professional development, personal assessment, and career counseling, as well as career-related work experiences such as internships. Services provided include interest assessments, one-on-one counseling, résumé critiques, and mock interviews. Graduating seniors may also receive job search coaching, placement file assistance, and information on graduate and professional school programs. For these or other related services, visit the Career Center, call 509-527-2664, or email <career@wallawalla.edu>.

## Disability Support Services

Village Hall, Lower Level

In accordance with Section 504 of the Rehabilitation Act of 1973 and the Americans With Disabilities Act of 1990, Disability Support Services (DSS) provides access to students with either permanent or temporary disabilities through a variety of services and equipment. Students requesting accommodations must provide appropriate documentation of a disability; documentation may be faxed to 509-527-2090. The Disability Support Services Office is located in the Teaching Learning Center. Contact DSS coordinator Sue Huett, 509-527-2366 or e-mail <sue.huett@wallawalla.edu>, for accommodation needs on the College Place, Rosario, Portland, or Montana campuses. For accommodation policies and guidelines, see [wallawalla.edu/resources/student-support-services/disability-support-services](http://wallawalla.edu/resources/student-support-services/disability-support-services).

## Teaching Learning Center

Village Hall, Lower Level

Special, free, drop-in tutorial help is available in the Teaching Learning Center for all students who wish to improve their basic skills or increase their understanding of content in lower-division classes. Trained upper-division students tutor individuals or small groups. Established tutorial services are available in mathematics, sciences, and writing. The Writing Center is open to all students, including graduate students, who wish to learn how to improve or polish their papers. For these or other related services, visit the Teaching Learning Center, call 509-527-2313, or email <TLC1@wallawalla.edu>.

## WWU Libraries

Peterson Memorial Library

Resources for student research, including the library Catalog, can be found on the WWU Libraries homepage: [library.wallawalla.edu](http://library.wallawalla.edu). Electronic references such as encyclopedias, handbooks, and dictionaries, plus databases that provide full-text access to journal articles, are also available at this site; off-campus authenticated access to these electronic resources is available to current students, faculty, and staff. College Place and Portland students may access the Summit catalog, providing them with access to materials in over 30 libraries in Washington, Oregon, and Idaho. Students on the Portland and Montana campuses may access library web pages specifically designed for their needs. Online students may access additional library information from the Distance Learning link under "Services for..."

Librarians are available in person, by phone 509-527-2134, or by e-mail <reference@wallawalla.edu> to help students find and access the materials they need. Additionally, chat services may be accessed via [wallawalla.libguides.com/Reference-Information](http://wallawalla.libguides.com/Reference-Information).



# Summer Personnel

## Summer Session Office

Summer Session Director ..... Scott Ligman, Ph.D.  
Administrative Assistant ..... Beverly Scott, B.A.

## Summer Faculty Committees

Academic Standards Committee ..... Scott Ligman, Ph.D., Chair  
Admissions Committee ..... Dallas F. Weis, M.Ed., Chair  
Graduate Council ..... Joseph G. Galusha, D.Phil., Chair

## University Administration

John K. McVay, Ph.D., President  
Robert A. Cushman, Jr., Ph.D., Vice President for Academic Administration  
Steven G. Rose, B.S.B.A., C.P.A., Vice President for Financial Administration  
David Richardson Jr., Ph.D., Vice President for Student Life and Mission  
Jodeene Wagner, B.A., Vice President for University Relations and Advancement  
Scott H. Ligman, Ph.D., Associate Vice President for Academic Administration  
Joseph G. Galusha, D.Phil., Associate Vice President for Graduate Studies  
Trevor Congleton, M.S.W., Associate Vice President for Marketing and Enrollment Services  
Pedrito U. Maynard-Reid, Th.D., Assistant to the President for Diversity

## Academic Department Administration

Dean, School of Business, Josefer Montes, Ph.D.  
Dean, School of Education and Psychology, Denise Dunzweiler, Ph.D.  
Dean, School of Engineering, Douglas M. Logan, Ph.D.  
Dean, School of Nursing, Lucille Benson Krull, Ph.D.  
Associate Dean, School of Nursing, Trudy L. Klein, M.S.  
Dean, School of Social Work and Sociology, Pamela Keele Cress, Ph.D.  
Dean, School of Theology, David E. Thomas, D. Min.  
Chair, Department of Art, Thomas J. Emmerson, M.F.A.  
Chair, Department of Biological Sciences, David F. Lindsey, Ph.D.  
Chair, Department of Chemistry, Steven H. Lee, Ph.D.  
Summer Chair, Department of Communications and Languages, Jerrold W. Hartman, M.F.A.  
Chair, Department of English, Kellie A. Bond, Ph.D.  
Chair, Department of Health and Physical Education, Marvin L. Denney, M.Ed.  
Chair, Department of History and Philosophy, Gregory Dean Dodds, Ph.D.  
Chair, Departments of Mathematics and Computer Science, Jonathan D. Duncan, Ph.D.  
Chair, Department of Music, Karin E. Thompson, Ph.D.  
Chair, Department of Physics, Thomas B. Ekkens, Ph.D.  
Chair, Department of Technology, Linda M. Felipez, Ed.D.  
Director, University Libraries, Carolyn S. Gaskell, M.A.

## Summer Session Faculty

Alfaro, Alma, Ph.D., Professor of Languages  
Archer, Austin C., Ph.D., Professor of Psychology and Education  
Banks, John C., Ph.D., Adjunct Faculty in Biology  
Beem, Beverly G., Ph.D., Professor of English  
Bergherm, Brent, M.A., Assistant Professor of Technology  
Bing Perry, Pamela, D.M.F.T., Assistant Professor of Social Work  
Bond, Conna, J.D., Assistant Professor of Business  
Bond, Kellie A., Ph.D., Associate Professor of English  
Boyd, James D., M.S.W., Associate Professor of Social Work and Sociology  
Buell, Montgomery S., M.A., Associate Professor of History  
Cimmino, Paul F., Ph.D., Visiting Professor of Social Work  
Copsey, Mark J., A.M.L.S., Associate Librarian  
Cosaert, Carl P., Ph.D., Professor of Biblical Studies  
Cowles, David L., Ph.D., Professor of Biology  
Crawford, David B., M.F.A., Assistant Professor of Communications  
Cress, Pamela Keele, Ph.D., Professor of Social Work and Sociology  
Deming, John M., M.A., Adjunct Faculty in Education  
Denney, Eric, B.S., Adjunct Faculty in Health and Physical Education  
Denney, Marvin L., M.Ed., Assistant Professor of Health and Physical Education  
Dodds, Gregory Dean, Ph.D., Professor of History  
Duffy, Loury J., B.S., Instructor in Technology  
Duncan, Jonathan D., Ph.D., Professor of Mathematics  
Dunzweiler, Denise, Ph.D., Professor of Education  
Egbert, Robert D., Ph.D., Adjunct Faculty in Education  
Ekkens, Thomas B., Ph.D., Professor of Physics  
Emerson, Karen, M.S.W., Visiting Assistant Professor of Social Work  
Emmerson, Thomas J., M.F.A., Professor of Art  
Felipez, Linda M., Ed.D., Professor of Technology  
Fitzgerald, Troy, Ph.D., Adjunct Faculty in Religion  
Fritze, Tamara, Ph.D., Adjunct Faculty in English  
Galusha, Joseph G., D.Phil., Professor of Biology  
Gaskell, Carolyn S., M.A., Librarian  
Grussling, Kevin D., M.S.W., Assistant Professor of Social Work  
Hankins, Randi, M.S.W., Visiting Assistant Professor of Social Work  
Harris, Brian, M.Ed., Adjunct Faculty in Education  
Hartman, Jerrold W., M.F.A., Associate Professor of Communications  
Ivy, Linda L., Ph.D., Associate Professor of Psychology  
Janis, Christine, D.M.A., Adjunct Faculty in Music  
Jolliffe, Ronald L., Ph.D., Professor of English  
Kimball-Hilario, Harriett, M.S.W., Visiting Assistant Professor of Social Work  
Kissinger, Lori, M.T.E., Adjunct Faculty in Education  
Klein, Trudy L., M.S., Assistant Professor of Nursing  
Koble, Lisa, M.S.W., Adjunct Faculty in Social Work  
Krull, Lucille Benson, Ph.D., Professor of Nursing

Lee, Steven H., Ph.D., Professor of Chemistry  
 Lewis, Alicia, M.B.A., Adjunct Faculty in Music  
 Libby, Joel, B.A., Instructor in Art  
 Lindsey, David F., Ph.D., Professor of Biology  
 Logan, Douglas M., Ph.D., Professor of Engineering  
 Long, Joshua S., M.A., Adjunct Faculty in Education  
 Maynard-Reid, Pedrito U., Th.D., Professor of Biblical Studies and Missiology  
 McClay, Bruce, M.A., Librarian  
 Melgosa, Annette D., M.A.L.I.S., M.Ed., Librarian  
 Melgosa, Julian M., Ph.D., Professor of Education and Psychology  
 Montes, Josefer, Ph.D., Professor of Business  
 Moor, Stephen L., M.A.T., Adjunct Faculty in Education  
 Muthersbaugh, Debbie S., Ph.D., Assistant Professor of Education  
 Nestler, James R., Ph.D., Professor of Biology  
 Nosworthy, Sylvia B., Ph.D., Professor of English  
 Ockerman, Janet Dee, Ph.D., Professor of Social Work and Sociology  
 Paul, Michaelynn R., M.S.N., Assistant Professor of Nursing  
 Peters, Nancy R., Ph.D., Associate Professor of Social Work  
 Place-Allyn, Mary, M.S.W., Adjunct Faculty in Social Work  
 Pollard, Bruce Wayne, M.S.W., Assistant Professor of Social Work  
 Randolph, Tamara L., Ph.D., Professor of Education  
 Regalado, Ferdinand, Ph.D., Professor of Theology  
 Ritz, Lyn C., D.M.A., Professor of Music  
 Scott, Christy A., M.L.S., Assistant Librarian, Level II  
 Scott, Richard W., M.S., Assistant Librarian, Level II  
 Scott, Rudy M., B.A., Adjunct Faculty in Education  
 Selby, Melodie A., P.E., M.S.E., Assistant Professor of Engineering  
 Smith, J. Anthony, Ph.D., Associate Professor of Chemistry  
 Smith, Susan B., Ph.D., Professor of Social Work and Sociology  
 Stough, R. Lee, Ph.D., Professor of Psychology  
 Szalda-Petree, Ann C., Ph.D., Visiting Associate Professor of Social Work  
 Tetz, Karen B., Ph.D., Professor of Nursing  
 Thomas, David E., D.Min., Professor of Theology  
 Thompson, Alden L., Ph.D., Professor of Biblical Studies  
 Thompson, Karin E., Ph.D., Associate Professor of Music  
 Tiffin, Timothy L., D.A., Professor of Mathematics  
 Tillotson, Emily, M.S.W., Assistant Professor of Social Work and Sociology  
 Townsend, Jeffrey, Adjunct Faculty in Communications  
 Vigil, Janice R., M.N., Adjunct Faculty in Nursing  
 Vining, Kristin, B.A., Adjunct Faculty in Music  
 Vonderfecht, Heather R., Ph.D., Visiting Associate Professor of Social Work  
 Wagner, Lynn R., M.S., Associate Professor of Nursing  
 Watkins, Brian N., M.S., Adjunct Faculty in Biology  
 Willoughby, Anne Marte, M.S.W., Assistant Professor of Social Work  
 Yazak, Daniel L., D.Ed., Visiting Professor of Social Work

# Notes

Schedule Planner						
	Monday	Tuesday	Wednesday	Thursday	Friday	Credits
7:00						
8:00						
9:00						
10:00						
11:00						
12:00						
1:00						
2:00						
3:00						
4:00						
5:00						
6:00						
Total credits:						

# Campus Buildings

## Map Locations

1. Plant Services
2. Winter Educational Complex
3. Old Rogers School Site
4. Canaday Technology Center
5. Office of Enrollment
6. Risk and Safety Management
7. The Express
8. University Church
9. Kretschmar Hall
10. Havstad Alumni Center
11. Chan Shun Pavilion
12. Bowers Hall
13. Campus Security
14. Spiritual Life and Mission
15. Melvin K. West Fine Arts Center
16. Powerhouse
17. Sittner Hall

18. Centennial Green
19. University Bookstore
20. Village Hall
21. Foreman Hall
22. Conard Hall
23. Meske Hall
24. Peterson Memorial Library
25. Rigby Hall
26. Smith Hall
27. Kellogg Hall
28. Mountain View Apartments
29. The Atlas Student House
30. University Studios and Guest Rooms
31. University Village Life
32. Hallmark Apartments
33. Birch Street Apartments
34. Administration Building

## Schedule Abbreviations

ADM	Administration Building (English, History, Theology)
AGYM	Alumni Gymnasium, located in WEC
BWH	Bowers Hall (Business)
CSP	Chan Shun Pavilion (Engineering)
CTC	Canaday Technology Center (Communications, Technology)
FAC	Melvin K. West Fine Arts Center (Art, Music)
KRH	Kretschmar Hall (Computer Science, Languages, Mathematics, Physics)
LibBrdRm	Peterson Memorial Library Board Room
NRS	Portland Campus Nursing Building
POOL	Tausick Memorial Pool, located in WEC
RGH	Rigby Hall (Biology, Chemistry)
SMH	Smith Hall (Education & Psychology)
TLC	Teaching Learning Center, located in Village Hall
VLH	Village Hall
WEC	Winter Educational Complex (Health & Physical Education, Nursing, Social Work & Sociology)

