

WALLA WALLA COLLEGE LIBRARY

JUL 1 1952

*W. E. Henderson*

# Walla Walla College

## BULLETIN

1941-42

*Copy of the Dean  
School of Theology*

ive

5  
-42



*"The School that Educates for Life"*

WALLA WALLA COLLEGE LIBRARY

# WALLA WALLA COLLEGE BULLETIN

---

CATALOGUE  
1941-42



*If morality and religion are to live in a school, it must  
be through a knowledge of God's word.—E. G. White.*

Vol. L                      September, 1941                      No. 2

---

Entered as Second-class mail matter, College Place, Wash.  
under Act of Congress, August 24, 1912  
ISSUED QUARTERLY

ARCHIVES  
WALLA WALLA COLLEGE LIBRARY



# School Calendar 1941-1942

1941	SEPTEMBER						1941
S	M	T	W	T	F	S	
	1	2	3	4	5	6	
7	8	9	10	11	12	13	
14	15	16	17	18	19	20	
21	22	23	24	25	26	27	
28	29	30					

1941	OCTOBER						1941
S	M	T	W	T	F	S	
			1	2	3	4	
5	6	7	8	9	10	11	
12	13	14	15	16	17	18	
19	20	21	22	23	24	25	
26	27	28	29	30	31		

1941	NOVEMBER						1941
S	M	T	W	T	F	S	
						1	
2	3	4	5	6	7	8	
9	10	11	12	13	14	15	
16	17	18	19	20	21	22	
23	24	25	26	27	28	29	
30							

1941	DECEMBER						1941
S	M	T	W	T	F	S	
	1	2	3	4	5	6	
7	8	9	10	11	12	13	
14	15	16	17	18	19	20	
21	22	23	24	25	26	27	
28	29	30	31				

1942	JANUARY						1942
S	M	T	W	T	F	S	
				1	2	3	
4	5	6	7	8	9	10	
11	12	13	14	15	16	17	
18	19	20	21	22	23	24	
25	26	27	28	29	30	31	

1942	FEBRUARY						1942
S	M	T	W	T	F	S	
1	2	3	4	5	6	7	
8	9	10	11	12	13	14	
15	16	17	18	19	20	21	
22	23	24	25	26	27	28	

1942	MARCH						1942
S	M	T	W	T	F	S	
1	2	3	4	5	6	7	
8	9	10	11	12	13	14	
15	16	17	18	19	20	21	
22	23	24	25	26	27	28	
29	30	31					

1942	APRIL						1942
S	M	T	W	T	F	S	
			1	2	3	4	
5	6	7	8	9	10	11	
12	13	14	15	16	17	18	
19	20	21	22	23	24	25	
26	27	28	29	30			

1942	MAY						1942
S	M	T	W	T	F	S	
					1	2	
3	4	5	6	7	8	9	
10	11	12	13	14	15	16	
17	18	19	20	21	22	23	
24	25	26	27	28	29	30	
31							

1942	JUNE						1942
S	M	T	W	T	F	S	
	1	2	3	4	5	6	
7	8	9	10	11	12	13	
14	15	16	17	18	19	20	
21	22	23	24	25	26	27	
28	29	30					

# Table of Contents

## I

ADMINISTRATION AND INSTRUCTION

## II

HISTORICAL AND DESCRIPTIVE SKETCH

## III

COST OF ATTENDANCE

## IV

GENERAL REGULATIONS

## V

ADMINISTRATION OF THE CURRICULUMS

## VI

SENIOR COLLEGE COURSES

## VII

JUNIOR COLLEGE COURSES

## VIII

DEPARTMENTS OF INSTRUCTION

## IX

THE SCHOOL OF THEOLOGY

## X

THE SUMMER SESSION

## XI

GRADUATES OF 1941

## XII

TIME SCHEDULE OF CLASSES AND LABORATORIES

# The College Calendar

1941-1942

## SUMMER QUARTER

Registration .....	Wed., June 11
Close of Summer quarter .....	Tues., Aug. 19

## AUTUMN QUARTER

All freshmen arrive on campus .....	Wed., Oct. 1
Freshman convocation, attendance required, 8:00 p. m. ....	Wed., Oct. 1
Freshman tests, 9:00 a. m.; 2:00 p. m. ....	Thurs., Oct. 2
Freshman convocation, attendance required, 8:00 p. m. ....	Thurs., Oct. 2
Registration of freshman, 9:00 a. m.; 2:00 p. m. ....	Fri., Oct. 3
Freshman vespers, 7:30 p. m. ....	Fri., Oct. 3
Registration of new students, 9:00 a. m.; 2:00 p. m. ....	Sun., Oct. 5
Validation of advance registration .....	Sun., Oct 5 to Fri., Oct. 10
Faculty-Student reception, 8:00 p. m. ....	Sun., Oct. 5
Classes begin (All students), 8:00 a. m. ....	Mon., Oct. 6
Annual field day .....	Wed., Oct. 8
Thanksgiving recess .....	Thurs., Fri., Nov. 20, 21
Registration for winter quarter .....	Nov. 23 to Dec. 12
Instruction ends, 12:15 p. m. ....	Tues., Dec. 23

## WINTER QUARTER

Registration of new students, 2:00 p. m. ....	Sun., Jan. 4
Instruction begins, 8:00 a. m. ....	Mon., Jan. 5
Registration for spring quarter .....	Feb. 15 to March 6
Instruction ends, 12:15 p. m. ....	Thurs., March 19

## SPRING QUARTER

Registration of new students, 2:00 p. m. ....	Mon., Mar. 23
Instruction begins, 8:00 a. m. ....	Tues., Mar. 24
Registration for Autumn quarter .....	May 3 to 22
Instruction ends, 6:00 p. m. ....	Fri., June 5
Senior consecration service, 8:00 p. m. ....	Fri., June 5
Baccalaureate sermon, 11:00 a. m. ....	Sat., June 6
Commencement, 10:00 a. m. ....	Sun., June 7





GATEWAY OF SERVICE



## PART I

# Administration and Instruction

## Board of Trustees

E. L. NEFF <i>President</i> .....	Walla Walla, Washington
G. W. BOWERS, <i>Secretary</i> .....	College Place, Washington
F. W. PETERSON, <i>Treasurer</i> .....	College Place, Washington
W. B. OCHS .....	Oshawa, Ontario, Canada
H. C. KEPHART .....	Walla Walla, Washington
V. G. ANDERSON .....	Portland, Oregon
C. A. SCRIVEN .....	Seattle, Washington
L. E. ESTEB .....	Spokane, Washington
G. S. BELLEAU .....	Boise, Idaho
J. J. REISWIG .....	Bozeman, Montana
H. C. KLEMENT .....	Walla Walla, Washington

## Local Board of Management

E. L. NEFF, *chairman*; G. W. BOWERS, *secretary*; H. C. KEPHART; F. W. PETERSON; H. C. KLEMENT; L. E. ESTEB.



# Faculty

## ADMINISTRATION

GEORGE WINFIELD BOWERS, Ph.D.,  
*President*

FRANK W. PETERSON,  
*Business Manager*

IRENE SMITH-BLACK, B.A.,  
*Registrar*

DOROTHY FOREMAN, B.A.,  
*Dean of Women*

LEON B. LOSEY, M. S.,  
*Dean of Men*

MOLLIE LAY-SITTNER, B.A., B.S. (L.S.),  
*Librarian*

MARGUERITE APLINGTON, B.A.,  
*Accountant*

E. K. VANDE VERE, M.A.,  
*Principal, Walla Walla College Academy*

## TEACHING STAFF

GEORGE WINFIELD BOWERS  
*Professor of Chemistry*  
Ph.D., Nebraska

FRANCIS M. BURG  
*Dean Emeritus, School of Theology*  
S.T.B., Walla Walla College

PERCY W. CHRISTIAN  
*Professor of History*  
Ph.D., Northwestern

E. STRAUSS CUBLEY  
*Professor of Business Administration*  
M.A., Washington

VERNON E. HENDERSHOT  
*Professor of Religion*  
Ph.D., Southern California

VICTOR JOHNSON

*Professor of Violin and Music Theory*

*Director of Music Conservatory*

B.Mus., Washington, D. C.

GEORGE GUSTAV KRETSCHMAR

*Professor of Physics*

Ph.D., Chicago

THOMAS A. LITTLE

*Professor of English*

M.A., North Carolina

JOHN E. POTTS

*College Physician, Lecturer in Hygiene*

M.D., College of Medical Evangelists

HERMAN R. SITTNER

*Professor of Education*

*Director of Student Welfare and Personnel*

M.A., Washington

---

JAMES I. ROBISON

*Associate Professor of Religion*

B.A., Pacific Union College

AGNES L. SORENSON

*Associate Professor of Modern Languages*

M.A., Michigan

---

\*KENNETH APLINGTON

*Assistant Professor of English*

B.A., Walla Walla College

STERLING K. GERNET

*Assistant Professor of Music Theory*

Ph.D., Temple

HOLGER LINDSJO

*Assistant Professor of Ancient Languages and Antiquity*

Ph.D., Chicago

ALICE A. NEILSEN

*Assistant Professor of Education*

*Director of Department of Teacher Training*

M.A., Southern California

---

\*Leave of absence, 1941-1942.

DAISY SCHLUNTZ

*Assistant Professor of Home Economics*  
M.S., Nebraska

---

VIRGIL C. BECRAFT

*Instructor in Biblical History and Literature*  
B.A., Walla Walla College

LILLIAN BEATTY

*Instructor in Secondary Education*  
M.A., Stanford

ERNEST BOOTH

*Instructor in Biology*  
M.S., Washington

ORASON LEE BRINKER

*Instructor in Physical Education*  
B.A., Union College

RALPH M. DAVIDSON

*Instructor in Mathematics*  
M.S., Tennessee

DOROTHY FOREMAN

*Instructor in English*  
B.A., Union College

JOHN T. HAMILTON

*Instructor in Voice*  
B. Mus., Northwestern

ETHEL A. JOHNSON

*Instructor in Elementary Education*  
*Supervisor, grades seven and eight*  
M.A., Minnesota

RICHARD LEWIS

*Instructor in English*  
M.A., Southern California

ELEANOR MARKS-LINDSJO

*Instructor in Elementary Education*  
*Supervisor, grades one and two*  
B.A., Emmanuel Missionary College



HELEN FOREMAN-LITTLE

*Instructor in English*

M.A., Nebraska

LEON B. LOSEY

*Instructor in Agriculture*

M.S., Oregon State College

VEDA S. MARSH

*Instructor in Biology*

M.A., George Peabody College for Teachers

R.N., Glendale Sanitarium and Hospital

LULU HILL-MILLER

*Instructor in Art*

VIOLET SCOTT

*Instructor in Secondary Education*

M.A., Washington

BERNICE E. SEARLE

*Instructor in Elementary Education*

*Supervisor, grades five and six*

M.A., Minnesota

MOLLIE LAY-SITTNER

*Instructor in Library Science*

B.A., Walla Walla College, B. S. (L.S.), Washington

MAVIS SMITH

*Instructor in Elementary Education*

*Supervisor, grades three and four*

B.A., Pacific Union College

CLAUDE E. THURSTON

*Instructor in Chemistry*

M.S., Washington

E. K. VANDE VERE

*Instructor in Secondary Education*

M.A., Nebraska

MYRTLE M. WALKER

*Instructor in Business Administration*

B.A., Walla Walla College

STANLEY WALKER

*Instructor in Piano and Pipe Organ*

B. Mus., Northwestern

# Faculty Committees

## RELIGIOUS INTERESTS

G. W. BOWERS, V. E. HENDERSHOT, DOROTHY FOREMAN, L. B. LOSEY, J. I. ROBISON, V. C. BECRAFT.

## ADMISSION AND GRADUATION

G. W. BOWERS, IRENE BLACK, H. R. SITTNER, R. M. DAVIDSON, T. A. LITTLE, ALICE NEILSEN, P. W. CHRISTIAN.

## GOVERNMENT

G. W. BOWERS, DOROTHY FOREMAN, F. W. PETERSON, L. B. LOSEY, RICHARD LEWIS, J. I. ROBISON, H. R. SITTNER.

## PERSONNEL

H. R. SITTNER, S. K. GERNET, RICHARD LEWIS, ERNEST BOOTH, V. E. HENDERSHOT.

## PROGRAM

CLAUDE THURSTON, DOROTHY FOREMAN, L. B. LOSEY, MARGUERITE APLINGTON, HOLGER LINDSJO, O. L. BRINKER, STANLEY WALKER.

## LIBRARY

MOLLIE LAY-SITTNER, G. G. KRETSCHMAR, F. W. PETERSON, HOLGER LINDSJO, AGNES SORENSON.

## PUBLICATIONS

T. A. LITTLE, P. W. CHRISTIAN, DAISY SCHLUNTZ, R. L. COLLINS, E. K. VANDE VERE.

## FACULTY ADVISORS FOR THE ASSOCIATE STUDENTS

Graduate Manager, L. B. LOSEY; *The Collegian*, T. A. LITTLE; *The Mountain Ash*, RICHARD LEWIS.

## INDUSTRIAL SUPERINTENDENTS

FRANK W. PETERSON.....	Superintendent, Industrial Departments
MRS. E. A. BAGGETT.....	Laundry
JOHN BAUER, JR.....	Store
E. O. BECKER.....	Farm
RAY L. COLLINS.....	College Press
RUSSELL EMMERSON.....	Construction
FRANK GIBBON.....	Bakery
HARTLEY LUDDEN .....	Bindery
WILLIAM MERKEL.....	Heat and Light
FERDINAND M. SCHILLER.....	Garage
KATHLEEN KEEN-ZOLBER .....	Culinary

## PART II

### The College and Its Aims

Walla Walla College is a four-year liberal arts college fully accredited with the University of Washington, the State College of Washington, the Northwest Association of Secondary and Higher Schools, and the Association of Seventh-day Adventist Colleges and Secondary Schools. It is also accredited as a four-year teacher training institution by the Washington State Board of Education.

Walla Walla College is operated by the Seventh-day Adventist denomination, primarily as a center of higher education for its youth in the Pacific Northwest. Seventh-day Adventists accept without reservation the teachings of the Bible, among which they consider basic the immutability of the law of God, the original perfection of the universe, the fall of man, the plan of salvation, the imminent second coming of Christ, and the existence of the redeemed throughout eternity.

In harmony with these doctrines, Walla Walla College recognizes that "true education means more than the pursual of a certain course of study. It means more than the preparation for the life that now is. It has to do with the whole being, and with the whole period of existence possible to man. It is the harmonious development of the physical, the mental and the spiritual powers. It prepares the student for the joy of service in this world, and for the higher joy of wider service in the world to come."

To bring into actuality this conception of education, Walla Walla College declares its specific aims to be:

1. To present the ideals and principles of Christianity in such a way as to promote the development of a consistent Christian life characterized by loyalty to God and service to humanity.
2. To train for leadership in church and community in harmony with the distinctive ideals and world program of the Seventh-day Adventist denomination.



3. To develop character distinguished by power of will and ability of self-control, bringing every motive and desire into conformity to the eternal principles of right established by God and respected by the most enlightened elements of humanity.
4. To provide a broad basis for true culture which will permit proper discrimination as to the values of life, encourage devotion to noble ideals and practices, and lead to a worthy use of leisure.
5. To guide in the appropriation of the accumulated knowledge of the ages, in the stimulation of the power of independent reasoning, and in the acquisition of the ability to inspire others to a greater passion for wisdom and truth.
6. To inspire intelligent and sincere love for our country and its fundamental principles, while at the same time emphasizing the brotherhood of man, thus providing a preparation for judicious participation in the privileges and responsibilities of citizenship.
7. To encourage proper evaluation of the place of the individual in modern society, of his relationship to the social and economic order, and of his attitude toward an ever-changing civilization.
8. To facilitate the acquisition and maintenance of a high standard of bodily health, thus giving the individual genuine satisfaction in life and enabling the mind and spirit to make valuable contributions to our contemporary world.
9. To stimulate participation in practical vocational activities which will lead to an appreciation of the dignity of labor, furnish a definite conception of the abilities and traits requisite for success in the various vocations, and impart a proficiency adequate to provide employment in a productive and self-respecting occupation.

## Historical and Descriptive Sketch

Walla Walla College has been in successful operation since December 7, 1892. Its establishment was in harmony with a resolution unanimously adopted at the General Conference of Seventh-day Adventists held in Battle Creek, Michigan, in 1891.

The College buildings occupy an exceptionally beautiful site in the center of an elevated campus comprising about ten acres and commanding a pleasing view of the Blue Mountains to the east and south. This tract, surrounded by the town of College Place, is situated in the celebrated Walla Walla valley. The climate is mild and healthful.

About two and one-half miles to the northeast is Walla Walla, Washington, a city of about eighteen thousand inhabitants. Two railways enter Walla Walla: the Union Pacific and the Northern Pacific. An hourly bus service connects College Place with Walla Walla. In addition, the Union Pacific stages stop at the College campus. The transcontinental Roosevelt Highway is routed through College Place. The United Air Lines provide daily service to Walla Walla.

### BUILDINGS AND EQUIPMENT

#### *Administration Building*

The Administration Building is a three-story brick structure 48 by 122 feet. In it, besides classrooms and physics laboratories, are the business and administrative offices, an assembly hall with a seating capacity of more than five hundred, and the library.

#### *Dormitories*

Two wings (known as North and South Halls) extending westward from the Administration Building, and West Hall provide pleasant living quarters for one hundred and fifty young men.

Helen Conard Hall, a modern three-story brick dormitory, is the home of the young ladies. This building, 42 by 224 feet, offers every convenience for 142 women. Hot and cold running water in every room, a parlor with fireplace, and "rainbow room" make the dormitory life attractive. The first floor

contains a modern dining room, kitchen, refrigeration plant, together with a banquet room and the dormitory worship room.

#### *Science Hall*

The Science Hall, erected in 1924, gives ample provision for the chemistry and biology departments. Offices, class rooms, laboratories, and stock rooms are provided, and a biology museum has been added recently.

#### *Music Conservatory*

The Johnson Memorial Conservatory has been provided for the Music Department with studios, practice rooms, and an auditorium for recital purposes.

#### *Home Economics Cottage*

The Home Economics cottage offers facilities for classrooms and laboratories. It contains modern equipment for students studying in this department.

#### *Columbia Hall*

Columbia Hall is a reinforced concrete gymnasium-auditorium, 80 by 128 feet in size. With a seating capacity of over 2,500 persons, and equipped with a splendid pipe-organ, Columbia Hall serves the college community admirably as an auditorium. When used as a gymnasium the large floor provides ample space for physical education activities, including games and roller skating, while retaining the galleries for use of spectators. There are also dressing rooms, showers, a large stage, doctor's examination room, and hydrotherapy rooms.

#### *Swimming Pool*

Swimming facilities are provided in a 36 by 60 foot building, containing dressing rooms and a concrete pool. Water is supplied for the pool by the College artesian well. The water issues from the ground at a temperature of 63 degrees. In the winter the water is steam-heated.

#### *Training School Building*

The Training School occupies a two-story building, which contains the office of the Director of Teacher Training, the Training School library, classrooms for students of the first eight grades, and crafts workshops.



*Library*

The College library consists of over seventeen thousand volumes of standard literary and reference works. Current magazines and periodicals covering every phase of student interest are provided. The library is catalogued and card indexed, and is under the direct supervision of a trained librarian. New books, magazines, and periodicals are constantly being added to keep the library up-to-date.

*Vocational Equipment*

Year by year the College management has been expanding its several industries with a view to (1) providing opportunities for more students to earn part of their expenses while attending college, and (2) training young people in worthy vocations whereby they may become self-supporting missionaries. Among these enterprises are the bakery, College Press, bindery, dairy, refrigerating plant, laundry, woodwork shop, machine shop, general store, service station, garage, poultry yards, and farm.

Adjacent to the campus is the College farm, a fifty-acre tract which provides fruit, vegetables, and other farm produce in abundance. A large portion of the supplies of the cafeteria comes directly from the farm.

**RELIGIOUS ACTIVITIES**

Walla Walla College sponsors several organizations and activities which aid in training the students for Christian service.

*Church and Sabbath School*

The College Place Church with a membership of over nine hundred offers a training in missionary endeavor and church organization.

The Sabbath School develops leadership and teaching ability in college students who would develop their interests in its activities.

*Missionary Volunteer Society*

The Missionary Volunteer Society has for its object the development, by theory and practice, of efficient missionary workers. Several auxiliary bands, such as foreign mission, literature distribution, sunshine, and correspondence, are under the direction of this organization.



*Prayer Bands*

The Prayer Bands under student leadership encourage the prayer life of the student body. These groups meet regularly and foster the spiritual life of the individuals who participate.

## STUDENT ORGANIZATIONS

*Associated Students*

The Associated Students is an organization whose membership consists of all faculty members and regularly enrolled students. The Association has for its object the promotion of Walla Walla College ideals and activities. The two official publications of the Associated Students are the *Collegian*, the weekly newspaper of the College, and the *Mountain Ash*, the year book of the student body.

*Societies and Organizations*

Student organizations based on residence include Aleph Gimel Ain for the young women of Conard Hall, Omicron Pi Sigma of the young men of the College dormitories, and the Wavillagians for students living off the College campus.

Various departments also sponsor student organizations to the special interests of their group. These organizations include the Paulist Sodality, the Pre-Medical Society, the Pegasus Club, the International Relations Club, Beta Mu, Kate Lindsay Guild, Elementary Teachers' Club, Business Efficiency Club, A Tempo, Le Cercle Francais, Der Deutsche Verein, the Science Club, and the Biology Club.

## PART III

### Cost of Attendance

#### GENERAL INFORMATION

##### *Deposit*

The College operates on a cash basis, and requests that the students do the same. Before matriculating, students are required to make an advanced deposit as follows:

Home Students .....	\$48.00
Village Students .....	23.50

This deposit takes the place of the advance charge for tuition and home expenses. The student will then pay his actual school charges at the close of each six weeks, holding the deposit in reserve until the last period of the school year or until he leaves school. A clearance card is issued at the business office when the deposit is made, and students are expected to present same to the deans, registrar, and at the dining hall, to show that financial arrangements have been made to enter school.

##### *Expenses*

Tuition and school expense is divided into six periods of six weeks each. Statements are rendered at the close of each six weeks and are due and payable two weeks after the close of each school period.

In case settlement has not been made within two weeks the student may be asked to discontinue his school work. Fees (entrance, laboratory, library, etc.) are payable at the end of the first, third, and fifth periods and are charged by the quarter. Students who register late are required to pay tuition for the quarter in the subjects in which they receive credit.

By action of the Board of Walla Walla College, all students are required to pay their accounts in full before diplomas or degrees are granted. All students must pay their accounts in full before receiving their grade cards at the end of each quarter or a transcript of recorded credits. A student whose account is overdue may not be permitted to take the final examinations at the close of a quarter.

*Refunds and Discounts*

A refund on tuition is made only when the student withdraws for reasons approved by the faculty. A refund for dormitory charges is made for absences of more than two weeks caused by serious illness.

When three members of the same family are students in the College at the same time, a ten per cent rebate is made on tuition paid in advance for the period. A discount of five per cent is made to all students who pay their expenses for the school year in advance and two per cent for those who pay for the quarter in advance. The above discounts apply to all charges except fees.

*How to Remit*

In most cases it will be better for the parents to send money direct to the College, and not to their children. In doing so, draw all drafts, checks, orders, etc., in favor of "Walla Walla College." Students need but little spending money, and parents are urged to require a monthly statement of expenses from their children. Mail for the College pertaining to money matters should be addressed "Business Manager." Mail pertaining to the department of instruction should be addressed "President."

## HOME EXPENSES AND TUITION

With two students occupying one room, home expenses and tuition for a six weeks' period are \$43.50. It is expected that \$10.00 of this will be met by work. The rate per hour to be paid the student will be set each period by the management and the heads of the vocational departments and will be based on ability, industry, and faithfulness of the student. The charge of \$43.50 covers regular tuition for 16 quarter credits of class work, plain laundering not to exceed \$1.10 weekly, and room furnished with steam heat and electric light up to 100 watts. This does not include the student's board. An extra charge of 75c a period is made to each student occupying a corner room with two windows or a room with private water



closet. A reduction of \$1.50 is made to those occupying rooms on the fourth floor in North and South Halls. A school home clinic is conducted in each dormitory daily by a registered nurse and all students are entitled to take advantage of the medical service offered. An additional charge is made for extra supplies, treatments, or cases of prolonged illness. The school nurses will not make calls in the village. The clinic hours will be announced at the opening of school.

#### Board

The cafeteria plan of boarding is followed in the College home.

Board, minimum for six weeks

Men .....	\$18.50
Women .....	16.50
(Students not living in the school homes are charged 25 per cent more with no minimum.)	

### TUITION FOR NON-RESIDENT STUDENTS

(For a period of six weeks)

#### QUARTER CREDITS OF CLASS WORK

Fourteen to sixteen credits .....	\$25.00
Thirteen credits .....	22.10
Twelve credits .....	20.40
Eleven credits .....	18.70
Ten credits (minimum) .....	17.00

#### Special Tuition

Physical education is charged double tuition. Art with other subjects is charged double tuition; when taken alone, 35c for each two hours attendance per week.

#### Fees

A registration fee of \$5.00 for each quarter of attendance will be charged each student to cover matriculation fee, library fee, *Collegian*, *Mountain Ash*, Associated Students fee, lyceum, health service, and gymnasium fee.

#### Special Fees

Late registration.....	\$1.00
Change of program .....	1.00
Special examination .....	1.00
Advanced standing credit by examination, per quarter credit ....	1.00
Recording of Preparatory School credit .....	per unit 2.50
Transcript of grades	
First transcript .....	no charge
Each succeeding transcript .....	\$1.00
Diploma .....	3.00
Degree .....	5.00



## Walla Walla College

## Laboratory Fees

	AMT. PER QUARTER	PER QUARTER CREDIT
Art .....		\$1.25
Astronomy .....	\$1.00	
Biology .....	3.50	
Bacteriology .....	3.00	
Chemistry .....	4.50	
Pre-Nurses Chemistry .....	3.50	
China Painting .....	1.50	
Clothing .....		.50
Exp. Cookery .....	2.50	
Food Study .....		1.00
Design .....	1.00	
Industrial Arts .....		1.00
News Writing .....	.50	
Machine Shop .....	5.00	
Physics .....	4.00	
Physiology .....		1.00
Practical Hygiene .....	2.00	
Radio Speech .....	1.00	
Student Teaching .....		.25
Surveying .....	1.00	
Teaching of Art .....	1.00	
Woodwork .....		1.00

## Gymnasium

	AMT. PER QUARTER
Pool (for village students not registered in Physical Education) .....	\$1.00
Pool (for normal training pupils) once a week only .....	.50

## Typewriter Rentals

	AMT. PER QUARTER
Three hours weekly .....	\$1.50
Six hours weekly .....	2.75
Nine hours weekly .....	3.75

## Estimated Expenses for Home Students

The following estimate is based upon the supposition that a student is carrying full work, is doing \$10.00 worth of work each school period for which he is credited, and is not taking any special work such as music or art:

	LOW	AVERAGE	LIBERAL
Tuition, Room and Laundry (labor deducted) .....	\$170.00	\$190.00	\$200.00
Fees (Library, Industrial, and Laboratory) .....	12.00	18.00	24.00
Board .....	105.00	120.00	140.00
Books and Stationery .....	10.00	20.00	30.00
Totals	297.00	348.00	394.00

## MUSIC

*Charges*

Following are the rates of tuition for a period of six weeks. All charges are payable strictly at the end of each period.

Piano, Violin, or Organ, two lessons weekly .....	\$13.20
Piano, Violin, or Organ, one lesson weekly .....	7.80
Student Teachers:	
Piano, two lessons weekly .....	7.80
Piano, one lesson weekly .....	4.80

*Piano, Violin, and Vocal Production Classes*

Classes in Piano and Vocal Production meet twice a week. The charges are three dollars a period. Class enrollment is limited to ten.

*Rentals*

Piano, grand, one hour each day per period.....	\$2.50
Piano, upright, one hour each day per period.....	1.50
Piano, upright, two hours each day per period.....	2.50
Organ, two manual, one hour each day per period.....	2.50
Pipe Organ, one hour each day per period.....	7.20
Pipe Organ, for less than five hours per hour .....	.25
Piano rent for vocal students per period.....	1.00
Longer periods of practice at reduced rates.	

*A Cappella Choir and Glee Club*

All A Cappella Choir members will be charged 75c per quarter to cover part of the expenses for music, robes, advertising, and programs.

All Glee Club members will be charged 50c a quarter to cover part of the expenses for music, advertising, programs, etc.

*Withdrawal*

Students are expected to make arrangements for withdrawal, and must settle accounts at the business office before leaving. A statement from the instructor must be submitted by each student pursuing a laboratory course, certifying that he has returned or satisfactorily arranged for all apparatus used by him.

*Lessons*

Lesson charges are made by the period. Refunds will be made only in case of prolonged illness. Lessons missed by the teacher will be made up during the quarter. Lessons missed by the student cannot be made up unless the instructor is notified within a reasonable length of time before the lesson period.

### SCHOLARSHIP PLAN

Any student selling \$480.00 worth of Seventh-day Adventist literature and depositing this sum, which includes the cost of books and profit, with his Book and Bible House will receive an additional colporteur's bonus of \$60.00 or a total credit of \$300.00. A half or three-quarter scholarship is given on the same basis. This is to be used for tuition, fees, board, room, and laundry.

A student living in the village who desires to make use of the scholarship plan should sell \$240.00 worth of literature and deposit this sum with his Book and Bible House. An additional colporteur's credit of \$30.00 will be added, making a total of \$150.00.

Students wishing to avail themselves of the scholarship benefits must arrange to have the full amount of their required credit forwarded to the College before the close of the first six weeks of school. For further information the student is referred to the pamphlet, "The Scholarship Plan," circulated by the General Conference Publishing Department.

### TUITION ACQUIRED BY LABOR

Frequently, students who have not sufficient money to defray their expenses at the College are given employment in some industry connected with the institution. Thus many are assisted by the College management in their efforts to secure an education. One should not, however, expect to earn his entire expenses, as this is not compatible with good school work. Students are expected to take at least 10 credits of class work a quarter and are therefore limited in the amount which they can earn through labor. See page 31. Concerning employment of such help, the College Board has found it necessary to establish the following regulations: That where contracts are made with students to labor for tuition, if individuals thus earning tuition find it impossible to attend College, the Board will not obligate itself to redeem such tuition in cash; nor is it transferable, except by special arrangement with the Board. If the College in any instance redeems such tuition in cash, it shall be at a discount of not less than 50 per cent on the part of the holder on the total amount earned.



## MISCELLANEOUS

Stationery, textbooks, and such other material as students need in their school work may be obtained at the College Store at reasonable prices. Merchandise and textbooks will not be sold on account unless students have a cash deposit at the business office in addition to the regular school deposit.

Students should bring their baggage checks to the College business office. No charge is made for hauling baggage during the first week of each quarter.

## ALUMNI ASSOCIATION STUDENT LOAN FUND

The Alumni Association of Walla Walla College has available certain funds for assisting worthy students who have reached their senior year in the institution. All those who desire loans should make application with the registrar regarding such loans.

## BEQUESTS AND DONATIONS

Since it is highly important that the College Board should not be hampered by a lack of funds in its efforts to give the very best training to our young people, we invite those whom God has blessed with means to remember the cause of Christian education. All bequests and donations should be made payable to Walla Walla College, College Place, Washington.



## PART IV

# General Regulations

### *Government*

In all matters pertaining to personal conduct, students are expected to behave as responsible citizens and members of a Christian community. Any student who becomes antagonistic to the spirit and methods of the institution, thereby severs his connection with the College. Every effort will be made to stimulate the student to honest, conscientious work, but the College is not willing to undertake the problem of governing students who are not in sympathy with its purposes.

### *General Regulations*

Persons coming to College Place for purpose of entering any department of the College are subject to its government from the time of their arrival; and whenever a student has entered the College, he is under its jurisdiction until his connection is formally terminated by graduation or otherwise.

Walla Walla College publishes a Student Manual which gives detailed information as to the regulations and standards of the College. Students are expected to observe all regulations in the Student Manual as fully as those of the BULLETIN, and they should familiarize themselves with the same. A copy may be secured from the registrar.

Any regulation adopted by the Board or faculty and announced to the students shall have the same force as if in print.

### *Citizenship*

The standing of a student in the school is based upon his scholastic attainments as well as upon his attitudes, general conduct, and decorum. The student's rating as a citizen in the College community is indicated at certain times during the year and is based upon definite items of attitude, conduct, and faculty judgment.

### *Residence*

The board of managers, believing that it should have full control of those for whom it is held responsible, requires all unmarried students to board and room at the College. Students who must find some means of self-support may be per-

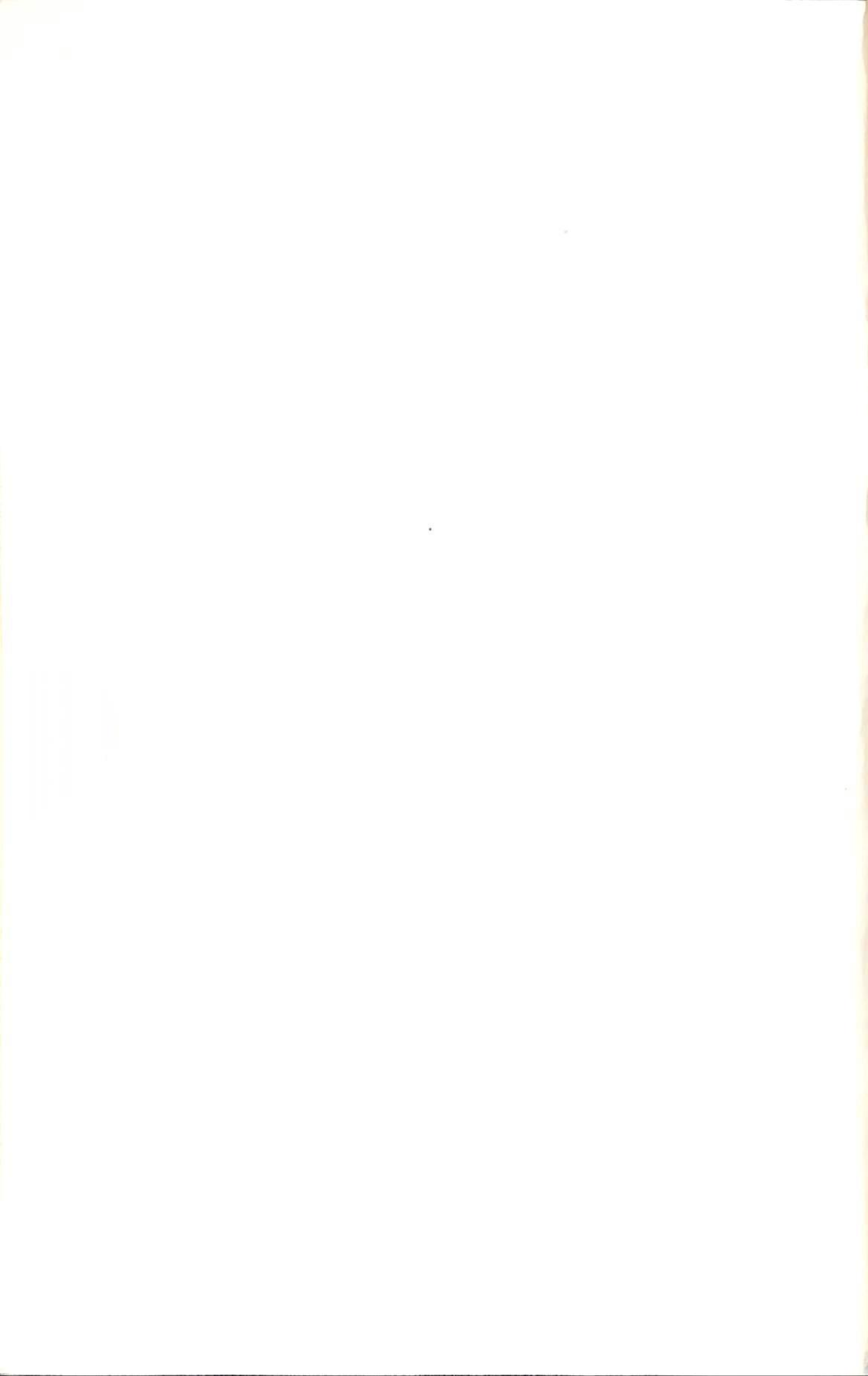


COLLEGE PLACE CHURCH



CONARD HALL

WALLA WALLA COLLEGE LIBRARY





mitted, on application, to make other arrangements for their accommodations. Applications are made on forms provided by the Board, and must be approved before these arrangements are completed. The faculty will refuse to matriculate students who fail to comply with these regulations. Students who have received permission to live in the village are subject to call into the school homes at any time.

#### *Chapel*

On three days each week religious services are held in the College chapel and all students are required to attend. For each unexcused absence exceeding two in a quarter, the student will receive one demerit. All demerits will appear as part of the permanent school records and will also appear on grade cards and credit transcripts. A student whose demerits for any quarter exceed two will be subject to discipline.

#### *Sabbath Observance*

The seventh-day Sabbath is observed in Walla Walla College, and all students are expected to deport themselves in harmony with the day. The Students' devotional service is held on Friday evening. The Sabbath School convenes at 9:30 o'clock Sabbath morning; the church service is held at 11 o'clock. All students are expected to attend these services.

#### *Moral Conduct*

Students must abstain from indecent or disorderly behavior, from profane and unbecoming language, from visiting billiard rooms or gambling places, from attending the theater, motion pictures, or any other entertainments not approved by the College, from indulgence in alcoholic beverages, from card playing and from having cards in their possession, from having or reading pernicious literature, and from improper associations.

#### *Social Standards*

Walla Walla College is a co-educational institution and as such recognizes the proper associations of its citizens. Attendance at evening programs and at other social functions is permitted in harmony with specific standards which are set forth in the Student Manual.



*Use of Vehicles*

Students are requested not to bring automobiles or motorcycles to the institution. Those who bring such vehicles to the College will be required to place them in storage at their own expense, and deposit their keys and license plates with their dean. In cases of absolute necessity, students may secure a special permit from the administration allowing them to use their vehicle for specified purposes.

*Medical Examination and Service*

At the time of entrance to the College each student is required to submit evidence of a standard physical examination or to have such examination under the direction of the College physician. Throughout the year a limited free service is rendered for minor ailments to home students by the school nurse. For prolonged illness a reasonable charge is made. The Walla Walla Sanitarium provides complete health service at a discount to students.

*Vacation Absences*

A charge of one dollar will be made for each class missed before and after any vacation. The maximum penalty in any instance will be five dollars.

*Miscellaneous*

The College cannot be held responsible for the personal property of any student.

Each student will be required to pay for damage done by him to school property; if the damage is not reported within twenty-four hours, double the amount of replacement will be charged.

**THE SCHOOL HOMES**

The administration of the College believes that the purpose of the institution can be attained more successfully when students live in the school homes. Here amid comfortable, home-like influences, students may become efficient in the cultivation of those habits of life and graces of character which distinguish the refined Christian man and woman. These years in the lives of students are usually the formative ones, when habits of promptness, neatness, self-control, Christian courtesy, and ideals of association may be fixed. The value

of such training is regarded by many as the best part of an education for life.

Daily association of earnest young people should develop strong Christian character in every student who desires to become useful. Attractive and homelike parlors are provided in each dormitory for group entertainments and for the general use of the students during leisure time.

*Pledge*

Students who enter the College homes are understood by that act to pledge themselves to conform cheerfully to all regulations printed or announced.

*Study Hour*

In order to provide an atmosphere of study, quietness is maintained during the evening study period. Permission must be granted by the dean for any necessary absence from the school homes during the study hours. Students are not expected to receive visitors or telephone calls during this time except in cases of emergency.

*Leaving the Campus*

Since it frequently happens that students are unexpectedly called for, and since students are responsible to those in charge of the homes, no one should leave the campus for any length of time without arranging with their dean.

Students who find it necessary to be absent from the home after the retiring hour, should make previous arrangement with their dean for entrance. Any attempt to enter by other than the regular means will be considered a misdemeanor.

*Callers*

The dormitories are private homes. Persons who call upon members of the home family will show the same courtesies that they would if they were calling at any other private home. Young women may receive gentlemen callers in the parlors by permission from the dean of women.

*Rooms*

Students living in the homes are required to care for their own rooms, and are expected to observe habits of neatness and carefulness about the premises.



When a student leaves school his room should be neat and clean. Failure to do this will incur a charge of one dollar.

Every student is expected to bring his own bedding—three sheets, three pillow cases, a bedspread, a pillow, blankets or comforters, towels, dresser scarfs, curtains, a drinking glass, a laundry bag, and a cover for the study table. A bathrobe or kimono, and slippers should be provided for use during study hours. All girls expecting to work in the kitchen or laundry should bring three white smocks, made of light material.

Because of hazards of accident or fire, students are not permitted to possess firearms, candles, or lamps in their rooms. Electrical appliances may be used only after being approved by the dean, and will be subject to a charge of \$1.00 per period each.

Radios and phonographs are not allowed in the dormitory rooms. Radios are provided in the dormitory parlors for the use of resident students.

#### *Worship Attendance*

Attendance at evening and morning worship, Sabbath School, and Sabbath morning services is expected. If the student is ill or for some good reason cannot attend these meetings, he should obtain permission from his dean; he will then be expected to remain quietly in his own room.

A student may be absent from morning worship three times each six-week period without giving excuse. Unexcused absences are subject to discipline.

#### *Preparatory Students*

Students of preparatory grades (9-12) are not received into the dormitories.



## PART V

# Administration of the Curriculum

## ADMISSION

The College is open to all worthy persons of either sex who come for the purpose of doing earnest, faithful work. Every student who presents himself for admission to the College thereby pledges to observe all its regulations. When this pledge is broken, the student forfeits his membership with the institution.

## FRESHMAN WEEK

An introductory period of four days known as Freshman Week is devoted to the induction of new students into college life. It is essential that new students be in attendance. Several tests are given during this period which serve as a reliable basis for advising and assisting students in planning their college programs.

### *Psychological Examination*

This test is a measure to some extent of college aptitude, and the results are of value in arranging the student's study program.

### *English Placement*

All students entering as freshmen are required to take a preliminary examination in the principles of English usage and grammar. The examination requires evidence of the ability of the student to apply these principles in writing.

No charge is made for these tests if they are taken at the appointed time.

### *Physical Examinations*

A physical examination is required each year of all students entering the College. The charge for this examination is included in the matriculation fee.

## ADMISSION TO THE FRESHMAN CLASS

Candidates for admission to the College should submit formal application for admission made on the Washington uniform application for admission to higher institutions, pro-

vided by the registrar. This application, which will include a transcript of credit, should be sent by the high school or academy to the registrar of the College in ample time to be evaluated before the opening day of registration. Failure to file credentials early may result in delayed registration and unsatisfactory classification.

Credentials which are accepted toward admission become the property of the College and are kept on permanent file.

A student who for any reason is permitted to register temporarily will not be permitted to remain in school longer than one quarter without presenting a transcript.

#### *Entrance Requirements*

The following credits must be included among the sixteen required for entrance:

Bible, 3 units, or one unit is required for each year of attendance in a Seventh-day Adventist academy to the extent of three units.

English, 3 units.

Foreign language, 2 units. (Both units in the same language.)

History, one unit.

Mathematics, one unit.

Science, one unit. (Laboratory science in the eleventh or the twelfth grade.)

#### *Freshman*

Admission to freshman standing may be obtained by one of the following methods:

*By Certificate.* A graduate of an accredited secondary school provided he has an average of C and can furnish satisfactory recommendations and official transcripts of credits.

*By Examination.* A graduate of an unaccredited school or an applicant who is not a graduate or who is unable to furnish transcript of credits may qualify for freshman standing by passing examinations. A fee of one dollar will be charged for each examination and two dollars and fifty cents for recording each unit of credit.

*Provisional Admission.* An applicant for admission who presents fifteen or sixteen acceptable units, and who is deficient in not more than two of the prescribed units, may be admitted provisionally; but these deficiencies must be made up during the first year of residence.

#### *Late Registration*

The fee for late registration is \$1.00 for the first day after the regular registration period, and \$1.00 additional for every day late thereafter to a maximum of \$5.00. No student will be permitted to register after the first week of any quarter except



by special permission of the instructors under whom he wishes to register.

*Partial Course Load*

Students who must earn part of their way through school should plan to carry a lighter scholastic load. The following schedule is recommended:

Amount of Weekly Outside Work	Weekly Course Load
Under twenty hours	16 credits
From twenty to twenty-four hours	12-14 credits
From twenty-four to thirty hours	10-12 credits

*Restricted Enrollment*

If at the end of the first six weeks of any quarter a student fails to maintain an average of one-half honor credit for every hour of registration, he is given a probationary status. If at the end of the following quarter a student has failed to maintain this average, he will be asked to withdraw from the college for one or more quarters. He can be reinstated only by vote of the faculty.

During the time a student is on probation his extra-curricular activities will be limited.

*Private Lessons*

No student will be permitted to take or give instruction in or away from the College except by permission from the Committee on Admission and Graduation. Correspondence work will not be accredited to students who are in the College and who have the opportunity of taking the subjects there.

## CLASS REGULATIONS

*Enrollment*

A student is enrolled for a course only on presentation of a class card properly endorsed by the registrar.

*Class Attendance*

The student is responsible for regular attendance at all sessions of classes in which he is enrolled. All work missed by absence must be made up to the satisfaction of the instructor.

*Changes in Registration*

Changes in registration, properly endorsed by the registrar may be made during the first week following registration days. No change in registration involving entrance into a new course will be permitted after the first week (seven days)



following the beginning of instruction except by permission of the instructor and the registrar.

A charge of one dollar will be made after the first week for each change of registration not necessitated by the rules of the College.

#### *Withdrawals*

A student may withdraw from a course if he has justifiable reasons for so doing. Application must be made to the registrar, who will ascertain the standing of the student, and if passing, a grade of withdrawal will be given. Otherwise a grade of failure will be recorded. In either case the course must be repeated to receive credit. Permission for withdrawal must be obtained from the instructor.

No withdrawal from a course will be accepted during the last two weeks of the quarter. Courses dropped without permission will be marked F on the registrar's books.

Notification to an instructor is not a sufficient notice.

#### *Course Load*

The normal course load for all students is sixteen quarter credits per week. No student is allowed to register for less than ten credits of work without a certificate from a doctor. No freshman will be allowed to carry extra work. Sophomores, juniors, and seniors may register for eighteen quarter credits provided their average for the previous quarter was B.

No student will be allowed to add to his load by giving or receiving instruction, except by permission of the Committee on Admission and Graduation.

### CLASS STANDING

#### *Freshman Standing*

A student is ranked as a freshman when he has satisfied the entrance requirements.

#### *Sophomore Standing*

A student is ranked as a sophomore who has satisfied all entrance requirements and has a total of 36 quarter credits and 36 honor points.

#### *Junior Standing*

A student is ranked as a junior who has a minimum of 84 quarter credits and 84 honor points.

## PART III

### Cost of Attendance

#### GENERAL INFORMATION

##### *Deposit*

The College operates on a cash basis, and requests that the students do the same. Before matriculating, students are required to make an advanced deposit as follows:

Home Students .....	\$48.00
Village Students .....	23.50

This deposit takes the place of the advance charge for tuition and home expenses. The student will then pay his actual school charges at the close of each six weeks, holding the deposit in reserve until the last period of the school year or until he leaves school. A clearance card is issued at the business office when the deposit is made, and students are expected to present same to the deans, registrar, and at the dining hall, to show that financial arrangements have been made to enter school.

##### *Expenses*

Tuition and school expense is divided into six periods of six weeks each. Statements are rendered at the close of each six weeks and are due and payable two weeks after the close of each school period.

In case settlement has not been made within two weeks the student may be asked to discontinue his school work. Fees (entrance, laboratory, library, etc.) are payable at the end of the first, third, and fifth periods and are charged by the quarter. Students who register late are required to pay tuition for the quarter in the subjects in which they receive credit.

By action of the Board of Walla Walla College, all students are required to pay their accounts in full before diplomas or degrees are granted. All students must pay their accounts in full before receiving their grade cards at the end of each quarter or a transcript of recorded credits. A student whose account is overdue may not be permitted to take the final examinations at the close of a quarter.



*Refunds and Discounts*

A refund on tuition is made only when the student withdraws for reasons approved by the faculty. A refund for dormitory charges is made for absences of more than two weeks caused by serious illness.

When three members of the same family are students in the College at the same time, a ten per cent rebate is made on tuition paid in advance for the period. A discount of five per cent is made to all students who pay their expenses for the school year in advance and two per cent for those who pay for the quarter in advance. The above discounts apply to all charges except fees.

*How to Remit*

In most cases it will be better for the parents to send money direct to the College, and not to their children. In doing so, draw all drafts, checks, orders, etc., in favor of "Walla Walla College." Students need but little spending money, and parents are urged to require a monthly statement of expenses from their children. Mail for the College pertaining to money matters should be addressed "Business Manager." Mail pertaining to the department of instruction should be addressed "President."

## HOME EXPENSES AND TUITION

With two students occupying one room, home expenses and tuition for a six weeks' period are \$43.50. It is expected that \$10.00 of this will be met by work. The rate per hour to be paid the student will be set each period by the management and the heads of the vocational departments and will be based on ability, industry, and faithfulness of the student. The charge of \$43.50 covers regular tuition for 16 quarter credits of class work, plain laundering not to exceed \$1.10 weekly, and room furnished with steam heat and electric light up to 100 watts. This does not include the student's board. An extra charge of 75c a period is made to each student occupying a corner room with two windows or a room with private water



closet. A reduction of \$1.50 is made to those occupying rooms on the fourth floor in North and South Halls. A school home clinic is conducted in each dormitory daily by a registered nurse and all students are entitled to take advantage of the medical service offered. An additional charge is made for extra supplies, treatments, or cases of prolonged illness. The school nurses will not make calls in the village. The clinic hours will be announced at the opening of school.

#### Board

The cafeteria plan of boarding is followed in the College home.

Board, minimum for six weeks

Men .....	\$18.50
Women .....	16.50
(Students not living in the school homes are charged 25 per cent more with no minimum.)	

### TUITION FOR NON-RESIDENT STUDENTS

(For a period of six weeks)

#### QUARTER CREDITS OF CLASS WORK

Fourteen to sixteen credits .....	\$25.00
Thirteen credits .....	22.10
Twelve credits .....	20.40
Eleven credits .....	18.70
Ten credits (minimum) .....	17.00

#### Special Tuition

Physical education is charged double tuition. Art with other subjects is charged double tuition; when taken alone, 35c for each two hours attendance per week.

#### Fees

A registration fee of \$5.00 for each quarter of attendance will be charged each student to cover matriculation fee, library fee, *Collegian*, *Mountain Ash*, Associated Students fee, lyceum, health service, and gymnasium fee.

#### Special Fees

Late registration.....	\$1.00
Change of program .....	1.00
Special examination .....	1.00
Advanced standing credit by examination, per quarter credit ..	1.00
Recording of Preparatory School credit .....	per unit 2.50
Transcript of grades	
First transcript .....	no charge
Each succeeding transcript .....	\$1.00
Diploma .....	3.00
Degree .....	5.00

## Walla Walla College

## Laboratory Fees

	AMT. PER QUARTER	PER QUARTER CREDIT
Art .....		\$1.25
Astronomy .....	\$1.00	
Biology .....	3.50	
Bacteriology .....	3.00	
Chemistry .....	4.50	
Pre-Nurses Chemistry .....	3.50	
China Painting .....	1.50	
Clothing .....		.50
Exp. Cookery .....	2.50	
Food Study .....		1.00
Design .....	1.00	
Industrial Arts .....		1.00
News Writing .....	.50	
Machine Shop .....	5.00	
Physics .....	4.00	
Physiology .....		1.00
Practical Hygiene .....	2.00	
Radio Speech .....	1.00	
Student Teaching .....		.25
Surveying .....	1.00	
Teaching of Art .....	1.00	
Woodwork .....		1.00

## Gymnasium

	AMT. PER QUARTER
Pool (for village students not registered in Physical Education) .....	\$1.00
Pool (for normal training pupils) once a week only .....	.50

## Typewriter Rentals

	AMT. PER QUARTER
Three hours weekly .....	\$1.50
Six hours weekly .....	2.75
Nine hours weekly .....	3.75

## Estimated Expenses for Home Students

The following estimate is based upon the supposition that a student is carrying full work, is doing \$10.00 worth of work each school period for which he is credited, and is not taking any special work such as music or art:

	LOW	AVERAGE	LIBERAL
Tuition, Room and Laundry (labor deducted) .....	\$170.00	\$190.00	\$200.00
Fees (Library, Industrial, and Laboratory) .....	12.00	18.00	24.00
Board .....	105.00	120.00	140.00
Books and Stationery .....	10.00	20.00	30.00
Totals	297.00	348.00	394.00

## MUSIC

*Charges*

Following are the rates of tuition for a period of six weeks. All charges are payable strictly at the end of each period.

Piano, Violin, or Organ, two lessons weekly .....	\$13.20
Piano, Violin, or Organ, one lesson weekly .....	7.80

*Student Teachers:*

Piano, two lessons weekly .....	7.80
Piano, one lesson weekly .....	4.80

*Piano, Violin, and Vocal Production Classes*

Classes in Piano and Vocal Production meet twice a week. The charges are three dollars a period. Class enrollment is limited to ten.

*Rentals*

Piano, grand, one hour each day per period.....	\$2.50
Piano, upright, one hour each day per period.....	1.50
Piano, upright, two hours each day per period.....	2.50
Organ, two manual, one hour each day per period.....	2.50
Pipe Organ, one hour each day per period.....	7.20
Pipe Organ, for less than five hours per hour .....	.25
Piano rent for vocal students per period.....	1.00
Longer periods of practice at reduced rates.	

*A Cappella Choir and Glee Club*

All A Cappella Choir members will be charged 75c per quarter to cover part of the expenses for music, robes, advertising, and programs.

All Glee Club members will be charged 50c a quarter to cover part of the expenses for music, advertising, programs, etc.

*Withdrawal*

Students are expected to make arrangements for withdrawal, and must settle accounts at the business office before leaving. A statement from the instructor must be submitted by each student pursuing a laboratory course, certifying that he has returned or satisfactorily arranged for all apparatus used by him.

*Lessons*

Lesson charges are made by the period. Refunds will be made only in case of prolonged illness. Lessons missed by the teacher will be made up during the quarter. Lessons missed by the student cannot be made up unless the instructor is notified within a reasonable length of time before the lesson period.



### SCHOLARSHIP PLAN

Any student selling \$480.00 worth of Seventh-day Adventist literature and depositing this sum, which includes the cost of books and profit, with his Book and Bible House will receive an additional colporteur's bonus of \$60.00 or a total credit of \$300.00. A half or three-quarter scholarship is given on the same basis. This is to be used for tuition, fees, board, room, and laundry.

A student living in the village who desires to make use of the scholarship plan should sell \$240.00 worth of literature and deposit this sum with his Book and Bible House. An additional colporteur's credit of \$30.00 will be added, making a total of \$150.00.

Students wishing to avail themselves of the scholarship benefits must arrange to have the full amount of their required credit forwarded to the College before the close of the first six weeks of school. For further information the student is referred to the pamphlet, "The Scholarship Plan," circulated by the General Conference Publishing Department.

### TUITION ACQUIRED BY LABOR

Frequently, students who have not sufficient money to defray their expenses at the College are given employment in some industry connected with the institution. Thus many are assisted by the College management in their efforts to secure an education. One should not, however, expect to earn his entire expenses, as this is not compatible with good school work. Students are expected to take at least 10 credits of class work a quarter and are therefore limited in the amount which they can earn through labor. See page 31. Concerning employment of such help, the College Board has found it necessary to establish the following regulations: That where contracts are made with students to labor for tuition, if individuals thus earning tuition find it impossible to attend College, the Board will not obligate itself to redeem such tuition in cash; nor is it transferable, except by special arrangement with the Board. If the College in any instance redeems such tuition in cash, it shall be at a discount of not less than 50 per cent on the part of the holder on the total amount earned.

### MISCELLANEOUS

Stationery, textbooks, and such other material as students need in their school work may be obtained at the College Store at reasonable prices. Merchandise and textbooks will not be sold on account unless students have a cash deposit at the business office in addition to the regular school deposit.

Students should bring their baggage checks to the College business office. No charge is made for hauling baggage during the first week of each quarter.

### ALUMNI ASSOCIATION STUDENT LOAN FUND

The Alumni Association of Walla Walla College has available certain funds for assisting worthy students who have reached their senior year in the institution. All those who desire loans should make application with the registrar regarding such loans.

### BEQUESTS AND DONATIONS

Since it is highly important that the College Board should not be hampered by a lack of funds in its efforts to give the very best training to our young people, we invite those whom God has blessed with means to remember the cause of Christian education. All bequests and donations should be made payable to Walla Walla College, College Place, Washington.



## PART IV

# General Regulations

### *Government*

In all matters pertaining to personal conduct, students are expected to behave as responsible citizens and members of a Christian community. Any student who becomes antagonistic to the spirit and methods of the institution, thereby severs his connection with the College. Every effort will be made to stimulate the student to honest, conscientious work, but the College is not willing to undertake the problem of governing students who are not in sympathy with its purposes.

### *General Regulations*

Persons coming to College Place for purpose of entering any department of the College are subject to its government from the time of their arrival; and whenever a student has entered the College, he is under its jurisdiction until his connection is formally terminated by graduation or otherwise.

Walla Walla College publishes a Student Manual which gives detailed information as to the regulations and standards of the College. Students are expected to observe all regulations in the Student Manual as fully as those of the BULLETIN, and they should familiarize themselves with the same. A copy may be secured from the registrar.

Any regulation adopted by the Board or faculty and announced to the students shall have the same force as if in print.

### *Citizenship*

The standing of a student in the school is based upon his scholastic attainments as well as upon his attitudes, general conduct, and decorum. The student's rating as a citizen in the College community is indicated at certain times during the year and is based upon definite items of attitude, conduct, and faculty judgment.

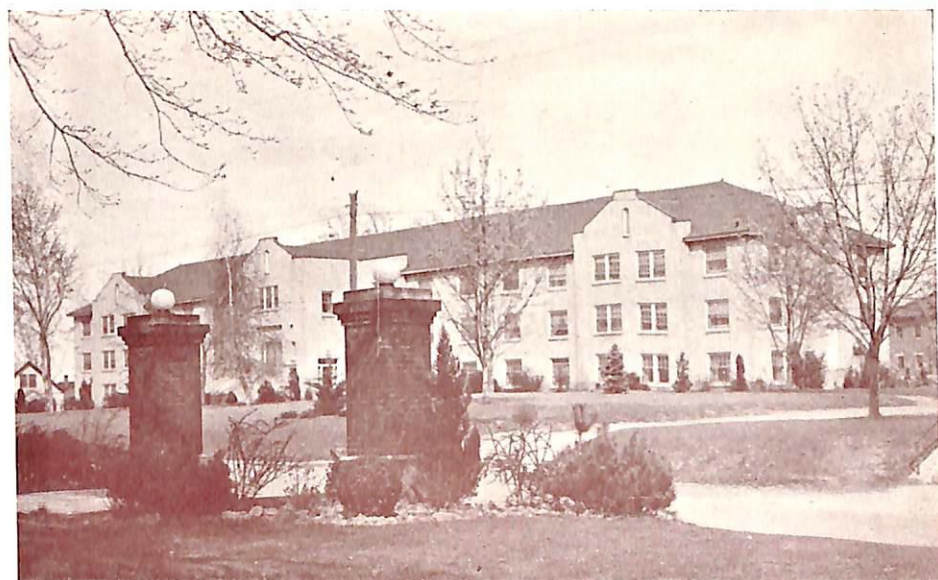
### *Residence*

The board of managers, believing that it should have full control of those for whom it is held responsible, requires all unmarried students to board and room at the College. Students who must find some means of self-support may be per-





COLLEGE PLACE CHURCH



CONARD HALL



mitted, on application, to make other arrangements for their accommodations. Applications are made on forms provided by the Board, and must be approved before these arrangements are completed. The faculty will refuse to matriculate students who fail to comply with these regulations. Students who have received permission to live in the village are subject to call into the school homes at any time.

#### *Chapel*

On three days each week religious services are held in the College chapel and all students are required to attend. For each unexcused absence exceeding two in a quarter, the student will receive one demerit. All demerits will appear as part of the permanent school records and will also appear on grade cards and credit transcripts. A student whose demerits for any quarter exceed two will be subject to discipline.

#### *Sabbath Observance*

The seventh-day Sabbath is observed in Walla Walla College, and all students are expected to deport themselves in harmony with the day. The Students' devotional service is held on Friday evening. The Sabbath School convenes at 9:30 o'clock Sabbath morning; the church service is held at 11 o'clock. All students are expected to attend these services.

#### *Moral Conduct*

Students must abstain from indecent or disorderly behavior, from profane and unbecoming language, from visiting billiard rooms or gambling places, from attending the theater, motion pictures, or any other entertainments not approved by the College, from indulgence in alcoholic beverages, from card playing and from having cards in their possession, from having or reading pernicious literature, and from improper associations.

#### *Social Standards*

Walla Walla College is a co-educational institution and as such recognizes the proper associations of its citizens. Attendance at evening programs and at other social functions is permitted in harmony with specific standards which are set forth in the Student Manual.



*Use of Vehicles*

Students are requested not to bring automobiles or motorcycles to the institution. Those who bring such vehicles to the College will be required to place them in storage at their own expense, and deposit their keys and license plates with their dean. In cases of absolute necessity, students may secure a special permit from the administration allowing them to use their vehicle for specified purposes.

*Medical Examination and Service*

At the time of entrance to the College each student is required to submit evidence of a standard physical examination or to have such examination under the direction of the College physician. Throughout the year a limited free service is rendered for minor ailments to home students by the school nurse. For prolonged illness a reasonable charge is made. The Walla Walla Sanitarium provides complete health service at a discount to students.

*Vacation Absences*

A charge of one dollar will be made for each class missed before and after any vacation. The maximum penalty in any instance will be five dollars.

*Miscellaneous*

The College cannot be held responsible for the personal property of any student.

Each student will be required to pay for damage done by him to school property; if the damage is not reported within twenty-four hours, double the amount of replacement will be charged.

**THE SCHOOL HOMES**

The administration of the College believes that the purpose of the institution can be attained more successfully when students live in the school homes. Here amid comfortable, home-like influences, students may become efficient in the cultivation of those habits of life and graces of character which distinguish the refined Christian man and woman. These years in the lives of students are usually the formative ones, when habits of promptness, neatness, self-control, Christian courtesy, and ideals of association may be fixed. The value

of such training is regarded by many as the best part of an education for life.

Daily association of earnest young people should develop strong Christian character in every student who desires to become useful. Attractive and homelike parlors are provided in each dormitory for group entertainments and for the general use of the students during leisure time.

*Pledge*

Students who enter the College homes are understood by that act to pledge themselves to conform cheerfully to all regulations printed or announced.

*Study Hour*

In order to provide an atmosphere of study, quietness is maintained during the evening study period. Permission must be granted by the dean for any necessary absence from the school homes during the study hours. Students are not expected to receive visitors or telephone calls during this time except in cases of emergency.

*Leaving the Campus*

Since it frequently happens that students are unexpectedly called for, and since students are responsible to those in charge of the homes, no one should leave the campus for any length of time without arranging with their dean.

Students who find it necessary to be absent from the home after the retiring hour, should make previous arrangement with their dean for entrance. Any attempt to enter by other than the regular means will be considered a misdemeanor.

*Callers*

The dormitories are private homes. Persons who call upon members of the home family will show the same courtesies that they would if they were calling at any other private home. Young women may receive gentlemen callers in the parlors by permission from the dean of women.

*Rooms*

Students living in the homes are required to care for their own rooms, and are expected to observe habits of neatness and carefulness about the premises.



When a student leaves school his room should be neat and clean. Failure to do this will incur a charge of one dollar.

Every student is expected to bring his own bedding—three sheets, three pillow cases, a bedspread, a pillow, blankets or comforters, towels, dresser scarfs, curtains, a drinking glass, a laundry bag, and a cover for the study table. A bathrobe or kimono, and slippers should be provided for use during study hours. All girls expecting to work in the kitchen or laundry should bring three white smocks, made of light material.

Because of hazards of accident or fire, students are not permitted to possess firearms, candles, or lamps in their rooms. Electrical appliances may be used only after being approved by the dean, and will be subject to a charge of \$1.00 per period each.

Radios and phonographs are not allowed in the dormitory rooms. Radios are provided in the dormitory parlors for the use of resident students.

#### *Worship Attendance*

Attendance at evening and morning worship, Sabbath School, and Sabbath morning services is expected. If the student is ill or for some good reason cannot attend these meetings, he should obtain permission from his dean; he will then be expected to remain quietly in his own room.

A student may be absent from morning worship three times each six-week period without giving excuse. Unexcused absences are subject to discipline.

#### *Preparatory Students*

Students of preparatory grades (9-12) are not received into the dormitories.



## PART V

# Administration of the Curriculums

## ADMISSION

The College is open to all worthy persons of either sex who come for the purpose of doing earnest, faithful work. Every student who presents himself for admission to the College thereby pledges to observe all its regulations. When this pledge is broken, the student forfeits his membership with the institution.

## FRESHMAN WEEK

An introductory period of four days known as Freshman Week is devoted to the induction of new students into college life. It is essential that new students be in attendance. Several tests are given during this period which serve as a reliable basis for advising and assisting students in planning their college programs.

### *Psychological Examination*

This test is a measure to some extent of college aptitude, and the results are of value in arranging the student's study program.

### *English Placement*

All students entering as freshmen are required to take a preliminary examination in the principles of English usage and grammar. The examination requires evidence of the ability of the student to apply these principles in writing.

No charge is made for these tests if they are taken at the appointed time.

### *Physical Examinations*

A physical examination is required each year of all students entering the College. The charge for this examination is included in the matriculation fee.

## ADMISSION TO THE FRESHMAN CLASS

Candidates for admission to the College should submit formal application for admission made on the Washington uniform application for admission to higher institutions, pro-

vided by the registrar. This application, which will include a transcript of credit, should be sent by the high school or academy to the registrar of the College in ample time to be evaluated before the opening day of registration. Failure to file credentials early may result in delayed registration and unsatisfactory classification.

Credentials which are accepted toward admission become the property of the College and are kept on permanent file.

A student who for any reason is permitted to register temporarily will not be permitted to remain in school longer than one quarter without presenting a transcript.

#### *Entrance Requirements*

The following credits must be included among the sixteen required for entrance:

Bible, 3 units, or one unit is required for each year of attendance in a Seventh-day Adventist academy to the extent of three units.

English, 3 units.

Foreign language, 2 units. (Both units in the same language.)

History, one unit.

Mathematics, one unit.

Science, one unit. (Laboratory science in the eleventh or the twelfth grade.)

#### *Freshman*

Admission to freshman standing may be obtained by one of the following methods:

*By Certificate.* A graduate of an accredited secondary school provided he has an average of C and can furnish satisfactory recommendations and official transcripts of credits.

*By Examination.* A graduate of an unaccredited school or an applicant who is not a graduate or who is unable to furnish transcript of credits may qualify for freshman standing by passing examinations. A fee of one dollar will be charged for each examination and two dollars and fifty cents for recording each unit of credit.

*Provisional Admission.* An applicant for admission who presents fifteen or sixteen acceptable units, and who is deficient in not more than two of the prescribed units, may be admitted provisionally; but these deficiencies must be made up during the first year of residence.

#### *Late Registration*

The fee for late registration is \$1.00 for the first day after the regular registration period, and \$1.00 additional for every day late thereafter to a maximum of \$5.00. No student will be permitted to register after the first week of any quarter except



by special permission of the instructors under whom he wishes to register.

*Partial Course Load*

Students who must earn part of their way through school should plan to carry a lighter scholastic load. The following schedule is recommended:

Amount of Weekly Outside Work	Weekly Course Load
Under twenty hours	16 credits
From twenty to twenty-four hours	12-14 credits
From twenty-four to thirty hours	10-12 credits

*Restricted Enrollment*

If at the end of the first six weeks of any quarter a student fails to maintain an average of one-half honor credit for every hour of registration, he is given a probationary status. If at the end of the following quarter a student has failed to maintain this average, he will be asked to withdraw from the college for one or more quarters. He can be reinstated only by vote of the faculty.

During the time a student is on probation his extra-curricular activities will be limited.

*Private Lessons*

No student will be permitted to take or give instruction in or away from the College except by permission from the Committee on Admission and Graduation. Correspondence work will not be accredited to students who are in the College and who have the opportunity of taking the subjects there.

## CLASS REGULATIONS

*Enrollment*

A student is enrolled for a course only on presentation of a class card properly endorsed by the registrar.

*Class Attendance*

The student is responsible for regular attendance at all sessions of classes in which he is enrolled. All work missed by absence must be made up to the satisfaction of the instructor.

*Changes in Registration*

Changes in registration, properly endorsed by the registrar may be made during the first week following registration days. No change in registration involving entrance into a new course will be permitted after the first week (seven days)



following the beginning of instruction except by permission of the instructor and the registrar.

A charge of one dollar will be made after the first week for each change of registration not necessitated by the rules of the College.

#### *Withdrawals*

A student may withdraw from a course if he has justifiable reasons for so doing. Application must be made to the registrar, who will ascertain the standing of the student, and if passing, a grade of withdrawal will be given. Otherwise a grade of failure will be recorded. In either case the course must be repeated to receive credit. Permission for withdrawal must be obtained from the instructor.

No withdrawal from a course will be accepted during the last two weeks of the quarter. Courses dropped without permission will be marked F on the registrar's books.

Notification to an instructor is not a sufficient notice.

#### *Course Load*

The normal course load for all students is sixteen quarter credits per week. No student is allowed to register for less than ten credits of work without a certificate from a doctor. No freshman will be allowed to carry extra work. Sophomores, juniors, and seniors may register for eighteen quarter credits provided their average for the previous quarter was B.

No student will be allowed to add to his load by giving or receiving instruction, except by permission of the Committee on Admission and Graduation.

### CLASS STANDING

#### *Freshman Standing*

A student is ranked as a freshman when he has satisfied the entrance requirements.

#### *Sophomore Standing*

A student is ranked as a sophomore who has satisfied all entrance requirements and has a total of 36 quarter credits and 36 honor points.

#### *Junior Standing*

A student is ranked as a junior who has a minimum of 84 quarter credits and 84 honor points.

*Senior Standing*

A student is ranked as a senior who has met all freshman and sophomore requirements and has at least 136 quarter credits and 136 honor points.

*Special Students*

A person who is at least twenty-one years of age who cannot fulfill the regular admission requirements for freshman standing, may be permitted to take certain courses for which the instructors consider him qualified. Special students are not eligible for a degree. They may ultimately become candidates for a degree, however, by completing the admission requirements of the college.

*Auditors*

A student may be admitted to a class as an auditor with the permission of the instructor whose class he desires to attend. No credit is allowed for audited work. Auditors must register with the registrar and pay one-half tuition for the course.

## EXPLANATION OF CREDITS

One credit is given for a course meeting for one lecture or class discussion per week for one quarter. Work done in the laboratory is counted on the basis of one credit for three hours in the laboratory. Vocational work, or courses demanding no outside preparation, require a minimum of three hours of work for one credit.

*Honor Points*

Three honor points are given for each quarter credit of work of an A grade, two honor points for each quarter credit of B, and one honor point for each quarter credit of C. A grade of D gives no honor points, and F deducts one honor point for each credit.

## EXAMINATIONS

Special examinations are given at a regular fee of \$1.00, payable in advance at the registrar's office. They may be either examinations for credit on work for which credentials cannot be supplied, or examinations taken at other than the time set for such regular examinations.



No credit can be earned in this way except by permission of the Committee on Admission and Graduation.

Credit earned in a subject by examination when the student is not regularly enrolled in the course is charged for at the rate of \$1.00 per quarter credit.

### SCHOLARSHIP STANDING

Reports of scholarship standing are made in duplicate to the student and his parents at the close of each quarter. These reports are made in accordance with the following system of marking:

A, superior; B, above average; C, average; D, below average; E, conditioned; F, failure; I, incomplete; W, withdrawal in good standing; WF, delinquent at time of withdrawal; Au, audit course.

E may be given the student of below average scholarship who fails in examination or who has some other work incomplete. If the work is not completed during the following quarter it becomes F. No grade above D may be recorded in the course in which the original grade was E. I is a temporary grade given to a student of average or better scholarship in the case of incomplete work or of absence from examination if approved by the instructor because of illness or other justifiable reason. An I must be removed during the six weeks period following that in which it was incurred; otherwise it becomes E, and the final grade may not be raised above D.

Incompletes will not be given unless arrangements are made beforehand with the teacher, and a definite time limit set for the work to be completed.

The same rule regarding incompletes applies to students who drop out of school as to students who continue in school.

Not more than one attempt will be allowed the student in which to remove an incomplete or a condition.

A student who has an incomplete for one quarter's work may not take extra work without permission of the President.

If a student receives F in any course it will be necessary for him to repeat the course in residence in order to receive



credit for it except by permission from the Committee on Admission and Graduation.

If a student fails in a course with us and then repeats the course with us, making a satisfactory grade, the failure will not be considered in computing his honor points.

A student failing to earn honor points in a course may not present credits from another school in the course or in a course in direct sequence to apply toward graduation.

#### *Altering Grades*

Grades once reported to the registrar may not be changed except by the student registering again and repeating the course unless it is an error made by the instructor.

#### *Transcripts*

A student who wishes to send transcripts of his record to other institutions will be furnished the first copy without charge. A fee of \$1.00 will be charged for each transcript thereafter.

Credits are not accepted after a student has ceased residence in the college.

## LOWER AND UPPER DIVISION COURSES

### *Course Numbers*

Courses numbered 1-49 are of freshman level; 50-99, sophomore level; 100-149, junior level; 150-200, senior level.

Upper division courses may not be taken until the preparatory work is completed, and also the following lower division requirements:

Religion	12 credits
Freshman English	9 credits
*Mathematics	9 credits
Physical Education and Health	6 credits

---

\* Mathematics is required of those who do not have preparatory geometry.

Uncompleted hyphenated courses are not counted toward the completion of any course or a degree.

Upper division students may receive upper division credit in a limited number of lower division courses. To receive such credit a student must have permission from his major

No credit can be earned in this way except by permission of the Committee on Admission and Graduation.

Credit earned in a subject by examination when the student is not regularly enrolled in the course is charged for at the rate of \$1.00 per quarter credit.

### SCHOLARSHIP STANDING

Reports of scholarship standing are made in duplicate to the student and his parents at the close of each quarter. These reports are made in accordance with the following system of marking:

A, superior; B, above average; C, average; D, below average; E, conditioned; F, failure; I, incomplete; W, withdrawal in good standing; WF, delinquent at time of withdrawal; Au, audit course.

E may be given the student of below average scholarship who fails in examination or who has some other work incomplete. If the work is not completed during the following quarter it becomes F. No grade above D may be recorded in the course in which the original grade was E. I is a temporary grade given to a student of average or better scholarship in the case of incomplete work or of absence from examination if approved by the instructor because of illness or other justifiable reason. An I must be removed during the six weeks period following that in which it was incurred; otherwise it becomes E, and the final grade may not be raised above D.

Incompletes will not be given unless arrangements are made beforehand with the teacher, and a definite time limit set for the work to be completed.

The same rule regarding incompletes applies to students who drop out of school as to students who continue in school.

Not more than one attempt will be allowed the student in which to remove an incomplete or a condition.

A student who has an incomplete for one quarter's work may not take extra work without permission of the President.

If a student receives F in any course it will be necessary for him to repeat the course in residence in order to receive



credit for it except by permission from the Committee on Admission and Graduation.

If a student fails in a course with us and then repeats the course with us, making a satisfactory grade, the failure will not be considered in computing his honor points.

A student failing to earn honor points in a course may not present credits from another school in the course or in a course in direct sequence to apply toward graduation.

#### *Altering Grades*

Grades once reported to the registrar may not be changed except by the student registering again and repeating the course unless it is an error made by the instructor.

#### *Transcripts*

A student who wishes to send transcripts of his record to other institutions will be furnished the first copy without charge. A fee of \$1.00 will be charged for each transcript thereafter.

Credits are not accepted after a student has ceased residence in the college.

## LOWER AND UPPER DIVISION COURSES

### *Course Numbers*

Courses numbered 1-49 are of freshman level; 50-99, sophomore level; 100-149, junior level; 150-200, senior level.

Upper division courses may not be taken until the preparatory work is completed, and also the following lower division requirements:

Religion	12 credits
Freshman English	9 credits
*Mathematics	9 credits
Physical Education and Health	6 credits

---

\* Mathematics is required of those who do not have preparatory geometry.

Uncompleted hyphenated courses are not counted toward the completion of any course or a degree.

Upper division students may receive upper division credit in a limited number of lower division courses. To receive such credit a student must have permission from his major



professor; he must do special work under the direction of the instructor; he must earn a grade not lower than B; he must do the work assigned for upper division the year he is taking the course.

Sophomores desiring to earn upper division credit in upper division courses must maintain a B average and receive permission from the registrar, to receive such credit.

Lower division students may not earn extra credit in a course by doing additional assigned work unless recommended by the Registrar.

#### *Extension Work*

The extension work is done by the Home Study Institute of Washington, D. C., which serves as the Extension Division of the Associated Colleges of Seventh-day Adventists. Full credit will be given for courses taken through the Institute.

College students in courses who wish to apply college credits earned by extension on the requirements for a diploma or a degree should obtain permission to do so from the Committee on Admission and Graduation. Failure to obtain permission necessitates a validation examination.

#### *Transfer Students*

An applicant who has attended another institution of collegiate rank must have forwarded to the registrar of the College a transcript of advanced standing embodying a statement of honorable dismissal. Transferred students must have maintained a C average in all courses accredited toward graduation.

It is obligatory to submit at entrance, records from all schools previously attended.

A student who cannot present a transcript of advanced standing may be admitted by examination.

Examinations for advanced credit must be taken before the end of the second week of the first quarter in which the student makes his initial entrance into college.

Transcripts of advanced standing are not evaluated finally until the student has been in residence at Walla Walla College one quarter and the quality of his work is determined.

A student transferring from a non-accredited college or university will be enrolled with conditional status, with tentative credit for such advanced standing as his transcripts may justify, as interpreted by the Committee on Admission and Graduation. If, after one quarter, the student maintains at least a C average in a normal program, he will be accepted as a regular student with full credit for such advanced standing as is allowed by the committee upon evaluation of his transcript. Failure to meet this standard will delay or prevent graduation.

No student who has been dropped from another institution on account of poor scholarship, or who is on probation from such institution, will be eligible for enrollment in the College until he can qualify for re-admission to the institution from which he has been dropped.

*Credit from Junior College*

The maximum amount of credit allowed from a junior college is one hundred eight credits.

*Registration Regulations*

Every student is required to register at the beginning of each quarter. Registration is for one quarter only.

The acceptance of entrance credentials, the completion of entrance tests, and the payment of fees constitute full admission to academic membership in the College.

Matriculation includes the filling out of information blanks, the selection of studies for the quarter, and the payment of the initial fee.

*Physical Education Requirements*

Regular freshman and sophomore courses in physical education are arranged for men and women.

These courses are required of all freshman and sophomore students under twenty-five years of age. Exemptions from these requirements may be granted on written applications approved by the President on recommendation of the physical education instructor. For reasons of a physical nature, exemptions may be granted on the recommendation of the college physician.



## PART VI

# Senior College Courses

## GRADUATION

### *Degrees and Diplomas*

Four general college courses are offered: one leading to the degree of Bachelor of Arts, another to the degree of Bachelor of Science, the third leading to the degree of Bachelor of Theology, and the fourth leading to the degree of Bachelor of Arts in Elementary Education. Those who complete the preparatory medical course and two years at the College of Medical Evangelists will receive the degree of Bachelor of Arts. Students satisfactorily completing the three-year course will receive a diploma. The specific requirements for graduation are given later in this bulletin.

Candidates for graduation from any curriculum are required to file with the registrar, not later than three weeks after the opening of the third quarter preceding graduation, a copy of their proposed schedules of courses for the three quarters preceding graduation.

Each professional or college senior shall, before registering for the third quarter of his senior year, file a formal application with the registrar for his diploma or degree, accompanied by the required fee.

Applicants who are late in filing their applications cannot be assured of recommendations to the faculty.

A degree student shall have the option of being held to the graduation requirements published in the catalogue under which he enters or for any year of attendance following, provided he does not discontinue his work at one time for longer than two quarters. All responsibility for fulfilling the requirements for graduation shall be thrown upon the student concerned.

### *Major Study*

Not later than the beginning of the *sophomore* year the student should select a major study in which at least forty-five credits of work must be done to obtain a degree. Imme-



diately after selecting his major study, the student should consult the head of the department in which the major study is to be taken, for advice concerning the choice of a minor study and appropriate electives.

From twenty-one to twenty-four credits of a student's major study should be in upper division courses. Majors may be obtained in the following: Biology, Business Administration, Chemistry, English Literature, History, Home Economics, Mathematics, Ancient Languages, German, French, Physics, Secretarial Science, and Music. Those desiring to specialize in Bible should consult the School of Theology for courses.

A student desiring to select a major in his senior year, must have not more than twenty-seven credits of his major to complete.

#### *Minor Study*

At least twenty-seven credits of work must be done in the minor study. Minors are available in the following: Bible, Greek, Biology, Business Administration, Chemistry, Education, English Literature, English Composition, Speech, History, Home Economics, Journalism, Mathematics, French, German, Physics, and Secretarial Science.

A grade of D does not count on a major or a minor but may count on other upper division courses.

#### *Pro-Seminar Courses*

Pro-seminar courses may not be taken until nine credits in education have been completed. These courses may count on a minor in education.

#### *Music Credit Allowed on a Degree Course*

Not more than nine credits of applied music may be allowed as elective without credit in theoretical music. For each additional credit of applied music to be used as elective credit there must be at least one credit in theoretical music.

A maximum of three credits on ensemble work may be used toward graduation from the general college curriculum.

#### *Senior Class Membership*

Candidates for graduation from the College must present a minimum of sixty credits in upper division courses.

All candidates for degrees must be members of the senior

class. All credits, including correspondence work and incompletes incurred at the end of the winter quarter, must be filed in the registrar's office by the end of the first six weeks of the spring quarter. Students failing to meet this requirement will be asked to withdraw from the graduating class.

No senior may take a freshman course.

#### *Residence Work*

Candidates for degrees, with the exception of medical students, must spend their senior year, 36 weeks, in residence at the College, and earn a minimum of 36 credits. Other candidates for graduation must complete the senior year's work of at least thirty-six credits in residence.

#### *A Second Bachelor's Degree*

The college does not issue a second degree of the same kind, but a student who has received a B. A. degree may continue his work and earn a B. S., B. Th., or vice versa. If one wishes to take a second degree, he must complete thirty-six credits in residence.

#### *Vocational Credit*

The vocational requirement for a bachelor's degree may be met by presenting nine credits from one of the following: auto mechanics, baking, home economics, machine shop, printing, or three credits in typing and six in shorthand upon completing a year's work in each. Vocational credit is also granted for commercial lettering, mechanical drawing, one-half of the library science course, and six credits in accounting.

#### *Senior Students Transferring*

A senior student transferring from another college must do at least nine credits of upper division work in his major subject in this college, and a minimum of three credits in his minor.

### REQUIREMENTS FOR GRADUATION

#### *Degrees*

The degree of Bachelor of Arts, or Bachelor of Science, is conferred upon students who have fulfilled the following conditions:

1. Complied with all entrance requirements. (See page 30).



2. Completed one hundred ninety-two quarter credits of college work as indicated under the various curriculums. At least sixty credits must be in upper division courses. The senior year's work of at least thirty-six credits must be done in residence.

3. Maintained a C average.

4. Earned at least forty-five credits in a major study in one department and a minimum of twenty-seven credits in an appropriate minor study. A minimum of twenty-one credits of the major study must be in upper division courses. No grade lower than C will be counted on a major or a minor.

5. Satisfied the following specific requirements:

Religion	24 credits
History	9 credits
*Education and Psychology	9 credits
**Language, Ancient or Modern	15-24 credits
English	9 credits
†Mathematics	9 credits
Basic Science	
Elect Chemistry, Physics, Biology,	
Physiology, or Mathematics	12 credits
Vocational	9 credits
Physical Education and Health	6 credits

Majors in Business, Secretarial Science, and Home Economics may be excused from foreign language.

### *Requirements for a Major in Music*

*Prerequisites:* Sight-singing I, Directing I, Fundamentals, Advanced Standing in Applied Music.

(Prerequisites may be waived only by recommendation of the Music Faculty.)

#### FIRST YEAR

<i>Autumn Quarter</i>	<i>Credits</i>	<i>Winter Quarter</i>	<i>Credits</i>	<i>Spring Quarter</i>	<i>Credits</i>
Piano, Voice, Violin	2	Piano, Voice, Violin	2	Piano, Voice, Violin	2
Harmony I	2	Harmony I	2	Harmony I	2
English	3	English	3	English	3
Bible	2	Bible	2	Bible	2
French or German	5	French or German	5	French or German	5
Dictation	1	Dictation	1	Dictation	1
Ensemble, Chorus		Ensemble, Chorus		Ensemble, Chorus	
Orchestra	½	Orchestra	½	Orchestra	½
Physical Education	½	Physical Education	½	Physical Education	½

\* Principles of education required.

\*\* See page 80.

† Students are excused from this requirement if two units of mathematics, including one unit of geometry, are presented from the preparatory school.



## Walla Walla College

## SECOND YEAR

Piano, Voice, Violin	2
Harmony II	2
Directing II or Hymnology	1
Health Principles	3
Adv. Sight Singing	2
New Test. Epistles	2
Gen. Eur. History	3
Ensemble, Chorus, Orchestra	½
Physical Education	½

Piano, Voice, Violin	2
Harmony II	2
Directing II or Hymnology	1
Survey of Physical Science	4
Music Teaching	1
New Test. Epistles	2
Gen. Eur. History	3
Ensemble, Chorus, Orchestra	½
Physical Education	½

Piano, Voice, Violin	2
Harmony II	2
Directing II or Hymnology	1
Principles of Christian Education	3
Music Teaching	2
New Test. Epistles	2
Gen. Eur. History	3
Ensemble, Chorus, Orchestra	½
Physical Education	½

## THIRD YEAR

Piano, Voice, Violin	3
Music History	3
Bible Doctrines I	2
Form and Analysis	2
Elective	6

Piano, Voice, Violin	3
Music History	3
Bible Doctrines I	2
Form and Analysis	2
Elective	6

Piano, Voice, Violin	3
Art Appreciation	3
Bible Doctrines I	2
Keyboard Harmony	2
Elective	6

## Junior Recital

## FOURTH YEAR

Piano, Voice, Violin	4
Counterpoint	2
Art	1
Bible Doctrines II	2
Elective	7

Piano, Voice, Violin	4
Counterpoint	2
Art	1
Bible Doctrines II	2
Elective	7

Piano, Voice, Violin	4
Counterpoint	2
Art	1
Bible Doctrines II	2
Elective	7

## Senior Recital

Piano, voice, and violin credit based on:

2 credits for 1 lesson and 12 hours practice per week.

3 credits for 1 or 2 lessons and 18 hours practice per week.

4 credits for 2 lessons and 24 hours practice per week.

## Outline of Bachelor of Science Course

## FIRST YEAR

Autumn Quarter	Credits
Bible	2
Fresh. English	3
Gen. Chemistry	4
Mathematics	4
Health Principles	3
Phys. Education	½

Winter Quarter	Credits
Bible	2
Fresh. English	3
Gen. Chemistry	4
Mathematics	4
Education	3
Phys. Education	½

Spring Quarter	Credits
Bible	2
Fresh. English	3
Gen. Chemistry	4
Mathematics	4
Prin. of Education	3
Phys. Education	½

## SECOND YEAR

Bible	2
Language	5
Mathematics	4
Physics or Chem.	3-5
Phys. Education	½

Bible	2
Language	5
Mathematics	4
Physics or Chem.	3-5
Phys. Education	½

Bible	2
Language	5
Mathematics	4
Physics or Chem.	3-5
Phys. Education	½

## THIRD YEAR

Bible	2	Bible	2	Bible	2
History	3	History	3	History	3
Vocational	3	Vocational	3	Vocational	3
Major	3-5	Major	3-5	Major	3-5
Physics		Physics		Physics	
Chemistry		Chemistry		Chemistry	
Biology		Biology		Biology	
Mathematics		Mathematics		Mathematics	
Elective	2-4	Elective	2-4	Elective	2-4

## FOURTH YEAR

Bible	2	Bible	2	Bible	2
Major	5-7	Major	5-7	Major	5-7
Physics		Physics		Physics	
Chemistry		Chemistry		Chemistry	
Biology		Biology		Biology	
Mathematics		Mathematics		Mathematics	
Elective	6-8	Elective	6-8	Elective	6-8

*Bachelor of Science with a Major in  
Nursing Education*

A Bachelor of Science degree with a major in Nursing Education and a minor in Physiological Science is offered to registered graduate nurses who have met the following prerequisites:

- a. Graduation from an accredited secondary school or its equivalent.
- b. Completion of the prenursing curriculum.
- c. Graduation from an accredited Seventh-day Adventist school of nursing or its equivalent with credits meeting a minimum evaluation of 96 quarter hours.

If a student satisfactorily fulfills the above requirements, the senior years work will represent the following (36 hours to be in Upper Division) :

Major (Nursing Education)	17 quarter hours
Minor (Physiological Science)	12 quarter hours
History	9 quarter hours
Religion	3 quarter hours
Electives	7 quarter hours



## Suggestive curriculum for Senior year :

<i>Autumn Quarter</i>	<i>Credits</i>	<i>Winter Quarter</i>	<i>Credits</i>	<i>Spring Quarter</i>	<i>Credits</i>
Methods in Nursing		Health		Supervision	3
Education	3	Administration	3	Seminar	1
Seminar	1	Seminar	1	College Physiology	
Embryology or	3	College Physiology or		or Parasitology	3
Teaching Technique	2	Parasitology	3	Educational Tests	
Religion (any		Obs. and Practice	3	and Measurements	3
quarter)	3	Philosophy of Edu-		History	3
History	3	cation or other		Electives	3
Electives	1	Education courses			
		History	3		
		Electives	3		

*Two-Year Course in Nursing Education*

Graduate registered nurses meeting requirements "a" and "c" who have not had the Pre-nursing subjects will be required to take 48 hours in addition as follows:

General Chemistry	9 quarter hours
Microbiology	6 quarter hours
English	9 quarter hours
Education	6 quarter hours
Religion	6 quarter hours
Electives	12 quarter hours

*Standards of Certification for Teachers in Seventh-day  
Adventist Secondary Schools*

*Certificates*

The General Conference Department of Education has provided two types of certificates for teachers of secondary subjects, a five-year certificate and a life certificate. The first, the Five-year Secondary Certificate, is based upon graduation from a college within the Association of Seventh-day Adventist Colleges and Secondary Schools, or one of equal rank, and requires a minimum of 23 credits of professional training. The second, the Life Secondary Certificate, is issued to a holder of the Five-year Secondary Certificate who has completed during the life of such certificate 27 months of successful teaching, and who is recommended by the union educational secretary.

*Requirement in Professional Training*

The minimum requirement of 23 credits in professional training in education shall be chosen from the following subjects, preferred in the order listed:



Principles of Christian Education (required)	3 credits
Educational Psychology	3 credits
Principles of Secondary Teaching	2 credits
Special Methods (in major subject)	3 credits
Secondary Practice Teaching	3 credits
Educational Measurements	3 credits
History of Education	3 credits
Adolescent Life and Problems	3 credits
Secondary School Administration	3 credits

### *Requirements in Specific Subjects*

The following requirements shall be the minimum for certification in the various fields represented below:

*Bible.* 27 credits, including Daniel and Revelation or advanced Bible doctrines, in addition to 3 secondary units.

*English.* 27 credits, including rhetoric, advanced composition, and types of literature, in addition to 3 secondary units. (Library science or speech is evaluated on a fifty per cent basis in meeting the English requirement).

*History.* 18 credits, including a survey of modern Europe and a national history, in addition to 2 secondary units.

*Language.* 18 credits, in addition to 2 secondary units in the same language.

*Mathematics.* 15 credits, in addition to 2 secondary units.

*Music.* Graduation from a standard Seventh-day Adventist College conservatory course in music, or its equivalent, as interpreted by the General Conference Department of Education.

*Natural Science.* 18 credits in laboratory science subjects, including 9 credits in the specific field in which certification is desired, in addition to the secondary content in the field in which certification is requested, and including a background of at least 2 secondary units in science.

*Typewriting.* 50 words a minute, net, in a certified 15-minute standard speed test, record to be submitted through registrar to General Conference Department of Education.

*Other Subjects.* Agriculture, art, bookkeeping cooking, health, printing, sewing, shorthand, woodworking:

18 credits or the equivalent in the specific field in which certification is desired, secondary units to be evaluated on the basis of 3 credits per semester.

## Bachelor of Arts

### IN ELEMENTARY EDUCATION

Prerequisite: Sixteen units of work in an accredited secondary school which must include the following:

English .....	3 units
History (including American History and Government) .....	2 units
Science (laboratory science in the eleventh or twelfth grade) .....	1 unit
Mathematics .....	1 unit
*Bible .....	3 units
Vocational .....	1 unit

\* One unit for each year of attendance at a Seventh-day Adventist Academy.

### *Requirements for the Degree of Bachelor of Arts in Elementary Education*

This course, with the major consisting of the courses in Education and Psychology, requires the completion of two hundred four (204) credits, divided as follows:

Education courses .....	28
Introduction to Education (3)	
Philosophy of Education (3)	
Teaching Techniques (9)	
Directed Teaching (10)	
Remedial Teaching (3)	
State Manual (0)	
Psychology .....	12
General Psychology (3)	
Educational Psychology (3)	
Child Psychology (3)	
Tests and Measurements (3)	
General Academic Requirements .....	98
English (Composition, Literature and Children's Literature (14)	
Fine Arts (3)	
Geography (5)	
Health Education (4)	
Industrial Arts (5)	
Music (6)	
Physical Education Methods (3)	
Principles of Mathematics (3)	
Religion (24)	
Science (12)	
Social Studies (15)	
Speech (4)	

Two Minors (18 upper division) (20 each) .....40

To be selected from the following:

Biology	French	Physics
Chemistry	German	Business
English Literature	Mathematics	Spanish
History	Music	Speech
Home Economics		
Free Electives		22

The following schedule of classes is recommended for candidates for the degree of Bachelor of Arts in Elementary Education:

### Four-Year Course

#### FIRST YEAR

<i>Autumn Quarter</i>	<i>Credits</i>	<i>Winter Quarter</i>	<i>Credits</i>	<i>Spring Quarter</i>	<i>Credits</i>
Religion	2	Religion	2	Religion	2
English	2	English	2	English	2
Biology	4	Survey of Physical Science	4	Biology	4
American History	3	American History	3	American History	3
Introduction to Education	3	Principles of Mathematics	3	Health Principles	4
Industrial Art	3	Art	3	Industrial Art	2
	17		17		17

#### SECOND YEAR

Religion	2	Religion	2	Religion	2
Psychology	3	Educational Psychology	3	Music Fundamentals	3
Speech	2	Speech	2	Sociology	3
American Government	3	Geography	3	Geography	2
Junior Leadership	1	Junior Leadership	1	Junior Leadership	1
Electives	6	Electives	6	Electives	6
	17		17		17

#### THIRD YEAR

Religion	2	Religion	2	Religion	2
Literature	2	Literature	2	Literature	2
Teaching and Techniques	4	Teaching and Techniques	4	Teaching and Techniques	4
Child Psychology	3	Philosophy of Education	3	Tests and Measurements	3
Electives	6	Electives	6	Electives	6
	17		17		17

#### FOURTH YEAR

Religion	2	Religion	2	Religion	2
Remedial Teaching	3	Teaching	4	Teaching	3
School Music	3	Electives	11	Child. Literature	2
Electives	9			Electives	10
	17		17		17



*Course Outline for Major in Business Administration*

## FIRST YEAR

<i>Autumn Quarter</i>	<i>Credits</i>	<i>Winter Quarter</i>	<i>Credits</i>	<i>Spring Quarter</i>	<i>Credits</i>
Economics	3	Economics	3	Economics	3
Typing	1	Typing	1	Typing	1
Accounting	2	Accounting	2	Accounting	2
Bus. Behavior		Filing	1	Consumer Education	1
and Ethics	1	Freshman English	3	Freshman English	3
Freshman English	3	Bible	2	Bible	2
Bible	2	Educational		Principles of	
General Psychology	3	Psychology	3	Education	3
Lettering	½	Lettering	½	Lettering	½
Physical Education	½	Physical Education	½	Physical Education	½
—	—	—	—	—	—
	16		16		16

## SECOND YEAR

Accounting	2	Accounting	2	Accounting	2
*Business Law	2	*Business Law	2	*Business Law	2
Business		Business		Business	
Correspondence	1	Correspondence	1	Correspondence	1
American History	3	American History	3	American History	3
Bible	2	Bible	2	Bible	2
Basic Science	4	Basic Science	4	Basic Science	4
Physical Education	½	Physical Education	½	Physical Education	½
Elective	1½	Elective	1½	Elective	1½
—	—	—	—	—	—
	16		16		16

## THIRD YEAR

†Marketing or		†Marketing or		†Marketing or	
Advertising	2	Advertising	2	Advertising	2
Accounting	3	Accounting	3	Accounting	3
Bible	2	Bible	2	Bible	2
Health Principles	3				
Minors and Electives	6	Minors and Electives	9	Minors and Electives	9
—	—	—	—	—	—
	16		16		16

## FOURTH YEAR

†Advertising or		†Advertising or		†Advertising or	
Marketing	2	Marketing	2	Marketing	2
Accounting	3	Accounting	3	Accounting	3
Methods in		Methods in Teaching		Methods in Teaching	
Teaching Typing	1	Bookkeeping	1	Bookkeeping	1
Bible	2	Bible	2	Bible	2
Minors and Electives	8	Minors and Electives	8	Minors and Electives	8
—	—	—	—	—	—
	16		16		16

\* Business Law is offered only on alternate years. It should be taken during the Junior year if necessary.

† Marketing and Advertising are offered only on alternate years.

*Course Outline for Major in Secretarial Science*

## FIRST YEAR

<i>Autumn Quarter</i>	<i>Credits</i>	<i>Winter Quarter</i>	<i>Credits</i>	<i>Spring Quarter</i>	<i>Credits</i>
Bible	2	Bible	2	Bible	2
Freshman English	3	Freshman English	3	Freshman English	3
Shorthand	3	Shorthand	3	Shorthand	3
Typing	1	Typing	1	Typing	1
Economics	3	Economics	3	Economics	3
Business Behavior and Ethics	1	Filing	1	Consumer Education	1
Psychology	3	Psychology	3	Principles of Education	3
Physical Education	½	Physical Education	½	Physical Education	½

## SECOND YEAR

Bible	2	Bible	2	Bible	2
Accounting I	2	Accounting I	2	Accounting I	2
American History	3	American History	3	American History	3
Shorthand	2	Shorthand	2	Shorthand	2
Business Correspondence	1	Business Correspondence	1	Business Correspondence	1
Typing	1	Typing	1	Typing	1
Secretarial Training	2	Secretarial Training	2	Secretarial Training	2
Health Principles	3	Elective	2½	Elective	2½
Physical Education	½	Physical Education	½	Physical Education	½

## THIRD YEAR

Bible	2	Bible	2	Bible	2
Laboratory Science	4	Laboratory Science	4	Laboratory Science	4
*Advertising or Business Law	2	*Advertising or Business Law	2	*Advertising or Business Law	2
Advanced Dictation	2	Advanced Dictation	2	Advanced Dictation	2
†Elective	6	†Elective	6	†Elective	6

## FOURTH YEAR

Bible	2	Bible	2	Bible	2
*Advertising or Business Law	2	*Advertising or Business Law	2	*Advertising or Business Law	2
Accounting II	2	Accounting II	2	Accounting II	2
Methods in Teaching Typing	1	Methods in Teaching Shorthand and Bookkeeping	2	Methods in Teaching Bookkeeping	1
Elective	9	Elective	8	Reading and Conference	2
				Elective	7

\* Advertising and Business Law are offered on alternate years.

† English 74-76 must be selected for three credits of this elective if minor is other than English.

## PART VII

### Junior College Courses

#### TEACHER TRAINING COURSES

Prerequisite: Sixteen units of work in an accredited school which must include the following:

English .....	3 units
History (including American History and Government) .....	2 units
Science .....	1 unit
Mathematics .....	1 unit
*Bible .....	3 units

\* One unit for each year in attendance at academy.

#### *Three-Year Teacher Training Course*

This course is offered to meet the needs of students from states where the three-year requirement is still effective. It includes all the specific professional and academic requirements listed for the four-year course (153 credits). A total of twenty-seven (27) credits of upper division work is required. Three credits of student teaching must be completed at Walla Walla College, regardless of the amount of similar work taken elsewhere.

#### *Outline of Three Year Course*

FIRST YEAR					
<i>Autumn Quarter</i>	<i>Credits</i>	<i>Winter Quarter</i>	<i>Credits</i>	<i>Spring Quarter</i>	<i>Credits</i>
Religion	2	Religion	2	Religion	2
English	2	English	2	English	2
Biology	4	Survey of Physical Science	4	Biology	4
American History	3	American History	3	American History	3
Introduction to Education	3	Principles of Mathematics	3	Health Principles	4
Industrial Art	3	Art	3	Industrial Art	2
—	17	—	17	—	17
SECOND YEAR					
Religion	2	Religion	2	Religion	2
Psychology	3	Educational Psychology	3	Sociology	3
Speech	2	Speech	2	Music Fundamentals	3
American Government	3	Geography	3	Geography	2
Teaching and Techniques	4	Teaching and Techniques	4	Teaching and Techniques	4
Junior Leadership	1	Junior Leadership	1	Junior Leadership	1
Electives	2	Electives	2	Electives	2
—	17	—	17	—	17



## THIRD YEAR

Religion	2	Religion	2	Religion	2
Literature	2	Literature	2	Literature	2
Teaching	1	Teaching	4	Teaching	1
School Music	3	Philosophy of		Child Literature	2
Child Psychology	3	Education	3	Tests and	
				Measurements	3
Electives	6	Electives	6	Electives	7
	<hr/> 17		<hr/> 17		<hr/> 17

*Two-Year Teacher Training Course*

This course is offered to meet the needs of students from states where the two-year requirement is still effective. Those interested should consult the registrar regarding specific requirements.

*Teacher Certification*

The Teacher Training Department of Walla Walla College is accredited by the State of Washington, and students who complete the three-year or the four-year Teacher Training Course in accordance with the above regulations will be granted an Elementary Certificate by the Department of Education of the State of Washington.

Completion of any of the three Teacher Training Courses will entitle the student to a corresponding Elementary Certificate issued by the Department of Education of the General Conference of Seventh-day Adventists, provided the proper prerequisites have been taken.

## PREPARATORY MEDICAL COURSE

The College Preparatory Course or its equivalent is a prerequisite to the Preparatory Medical Course. In this course are included all the requirements necessary for entrance to the College of Medical Evangelists. Credits in order to be accepted for entrance into the Medical College should show at least 1.35 honor points for each quarter credit in science, and for each quarter credit in non-science respectively. After completion of this course and two years of work in the College of Medical Evangelists, the Bachelor of Arts degree will be conferred.

Transfer students must do at least 36 credits, including 9 credits in science subjects, in this College.

Students must take the pre-medical diploma if they wish later to receive the Bachelor of Arts degree from this College.

The basic requirements for entrance to the College of Medical Evangelists may be met in two years. Such a course, however, does not lead to a diploma or degree.

**Prerequisite:** Sixteen units of work in an accredited school, which must include the following:

English .....	3 units
History .....	1 unit
Algebra .....	1 unit
Geometry .....	1 unit
*Language .....	2 units

\* Both of the language units must be in the same language.

### *Preparatory Medical Course*

#### FIRST YEAR

<i>Autumn Quarter</i>	<i>Credits</i>	<i>Winter Quarter</i>	<i>Credits</i>	<i>Spring Quarter</i>	<i>Credits</i>
Bible	2	Bible	2	Bible	2
Freshman English	3	Freshman English	3	Freshman English	3
General Math.	3	General Math.	3	General Math.	3
General Chemistry	4	General Chemistry	4	General Chemistry	4
College Zoology	4	College Zoology	4	College Zoology	4
Physical Education	½	Physical Education	½	Physical Education	½

#### SECOND YEAR

Bible	2	Bible	2	Bible	2
Physics	4	Physics	4	Physics	4
Organic Chemistry	3	Organic Chemistry	3	Organic Chem.	3
*Language	3	*Language	3	*Language	3
Amer. Government	3	Analytical Chem.	3	Analytical Chem.	3
Physical Education	½	Physical Education	½	Physical Education	½

#### THIRD YEAR

Bible	2	Bible	2	Bible	2
Speech	2	Speech	2	Speech	2
History	3	History	3	History	3
Education	3	Education	3	Education	3
Vocation	3	Vocation	3	Vocation	3
Vertebrate Embryology	3	Chemistry	3	Chemistry	3

\* Pre-medical students who have not had the requisite preparation in language must take 15 credits in language in the second year and 9 credits the third year. American Government and Chemistry of the second year must then be elected in the third year.

### PRE-DENTAL

Beginning in September, 1937, the minimum requirements for admission to the study of dentistry were advanced to two pre-dental years. The first two years of the pre-medical course is recommended.

## PRE-DIETETIC COURSE

Prerequisite: Sixteen units of work taken in an accredited school.

## FIRST YEAR

<i>Autumn Quarter</i>	<i>Credits</i>	<i>Winter Quarter</i>	<i>Credits</i>	<i>Spring Quarter</i>	<i>Credits</i>
Bible	2	Bible	2	Bible	2
Gen. Chemistry	4	Gen. Chemistry	4	Gen. Chemistry	4
Fresh. English	3	Fresh. English	3	Fresh. English	3
Food Study	3	Food Study	3	Food Study	3
Economics	3	Economics	3	Economics	3
Physical Education	½	Physical Education	½	Physical Education	½

## SECOND YEAR

Bible	2	Bible	2	Bible	2
Organic Chem.	3	Organic Chem.	3	Organic Chem.	3
Amer. Government	3	Sociology	5	Principles (Philosophy) of Education	3
Gen. Psychology	3	Educ. Psychology	3	Anatomy and Physiology	3
Elective	5	Anatomy and Physiology	3	Elective	5

## PRE-ENGINEERING AND MECHANICAL ARTS COURSE

The course is designed to meet the needs of students who wish a foundation for the study of engineering, or who wish to continue further scientific and cultural training leading to the Bachelor of Science degree. It will also give the requisite training in practical mechanics and shop practices needed by students who are planning on the mechanical trades as a vocation.

## FIRST YEAR

<i>Autumn Quarter</i>	<i>Credits</i>	<i>Winter Quarter</i>	<i>Credits</i>	<i>Spring Quarter</i>	<i>Credits</i>
Bible	2	Bible	2	Bible	2
Mathematics	4	Mathematics	4	Mathematics	4
Chemistry	4	Chemistry	4	Chemistry	4
Mechanical Drawing	2-3	Mechanical Drawing	2-3	Mechanical Drawing	2-3
*English	3	*English	3	*English	3
Physical Education	½	Physical Education	½	Physical Education	½

## SECOND YEAR

Bible	2	Bible	2	Bible	2
Physics	4	Physics	4	Physics	4
*Mathematics	4	*Mathematics	4	*Mathematics	4
Machine Shop	3	Machine Shop	3	Machine Shop and Welding	3
Economics	3	Economics	3	Economics	3
Physical Education	½	Physical Education	½	Physical Education	½

\* Students who elect the mechanical arts course and who are not interested in fulfilling the pre-engineering requirements should take Auto Mechanics in place of English in the first year and English in place of Mathematics in the second year. They may also take wood working in place of Economics if they choose.



## PRE-NURSING COURSE

Prerequisite: The following sixteen units in an accredited secondary school, as well as a high C average, are prerequisite in most schools of nursing:

English .....3 units

Language .....2 units  
(Two units must be in the same language)

Mathematics .....2 units  
(One unit algebra)

History .....1 unit

Bible .....1-4 units  
(One unit for each year of attendance at a Seventh-day  
Adventist academy)

(One unit for high school graduates)

Science .....2 units

(One unit must be chemistry or physics, with preference given to physics).

Pre-nursing students will be required to pass an examination in arithmetic upon entering the College.

<i>Autumn Quarter</i>	<i>Credits</i>	<i>Winter Quarter</i>	<i>Credits</i>	<i>Spring Quarter</i>	<i>Credits</i>
Bible	2	Bible	2	Bible	2 ✓
Freshman English	3	Freshman English	3	Freshman English	3
Physiology	3	Physiology	3	Physiology	3
Health Principles	3	Bacteriology	3	Bacteriology	3
Pre-nursing Chem.	3	Pre-nursing Chem.	3	Pre-nursing Chem.	3
History of Nursing	2	History of Nursing	2	History of Nursing	2
Physical Education	½	Physical Education	½	Physical Education	½



SCIENCE HALL



CONSERVATORY OF MUSIC





## PART VIII

# Departments of Instruction

## EXPLANATION

This section contains a list of all courses of study offered in the College. The departments are arranged in alphabetical order after the Bible department.

The College reserves the right to withdraw temporarily any course which does not have an adequate enrollment. A course may not be offered for fewer than ten applicants except in case of seniors.

The four-quarter plan has been adopted by Walla Walla College to render larger service and allow for a greater vocational program where students may remain out of school a quarter to earn their expenses. It is more flexible than the semester plan and adds 12 weeks' instruction to the regular year.

Courses bearing numbers from 1 to 49 inclusive are normally offered to freshmen; those from 50 to 99 are normally offered to sophomores; those from 100 to 199 to juniors and seniors.

Two or three numbers connected by hyphens indicate a course which ordinarily carries credit only when pursued for the full time. Only upon the permission of the instructor may credit be obtained by a student for a single quarter of study in such a hyphenated course.

The credit indicated in connection with each course is the "quarter credit," and one credit represents one hour of recitation a week for one quarter. The number of credits listed are for each quarter. Thus "Three credits; autumn, winter, spring; M. W. F., 11:25," means three credits each quarter, or a total of nine credits for the year, the class meeting Monday, Wednesday, Friday at the 11:25 a. m. period.

The descriptions of courses in each department include: (1) the number of the course as used in the College records; (2) the title of the course; (3) a brief statement of its subject matter and method; (4) number of quarter credits given; (5) quarter in which it is given (autumn, winter, spring); (6) the days and hour the class meets.

Courses preceded by \* are not given in 1941-1942.

## BIBLE

Mr. Hendershot, Mr. Becraft, Mr. Burg, Mr. Lindsjo, Mr. Robison

For general college students the following courses are recommended as fulfilling the Bible requirements:

(a) For freshmen who have had no Bible on the secondary level: Bible Survey; for freshmen who present units in Bible on the secondary level: Life and Teachings of Jesus.

(b) For sophomores: *Fundamentals of Christian Belief*. Students who have taken Bible Survey during their freshman year, may select *Life and Teachings of Jesus* for their sophomore year.

(c) For students on the junior level: *Daniel and Revelation*.\*

(d) Senior students may select a suitable upper division Bible course, such as: 151, 152, 153; 131-132-133; 135-136-137; or 161, 162, 163; the latter with consent of the instructor. However, in selecting a Bible course for the senior year, the general college Bible requirement may not be fulfilled with Church History or Homiletics, or any course which the School of Theology may wish to limit to ministerial students.

Theology students are referred to the outline for Bachelor of Theology.

1-2-3. *Bible Survey*. This course is a Bible introduction. Its aim is a fundamental knowledge of the contents and character of the books of the Bible. Beginning with a simple enumeration of Bible books and an introduction to methods and aids in Bible study, it will endeavor to present the background and circumstances of each book, and the persons through whom they were brought into existence. The groundwork will include a survey of the history of the Hebrew people from its beginnings, stressing especially the work of the prophets, while outlining essential Hebrew laws and institutions and filling out the picture with selections from Hebrew songs and wisdom books. Added to this, as its logical conclusion, is the growth of the New Testament, from the life of the Saviour through the preaching of the Gospel by his followers, in acts and in letters. Two credits; autumn, winter, spring; Sec. A., T. Th., 8:00; Sec. B., T. Th., 10:30.

5-6-7. *Life and Teachings of Jesus*. A study of the life of Christ as the Master Teacher and the heaven-born teachings of the One whose divine wisdom and practical application of the truth made His lessons both forceful and impressive and gave new meaning to the surroundings of every-day life. The principles of the Kingdom of God and of the acceptance of Christ. Lectures and assignments together with a study of the books, "Desire of Ages," "Christ's Object Lessons," and "Thoughts from the Mount of Blessing." Two credits; autumn, winter, spring; Sec. A, T. Th., 8:00; Sec. B, T., Th., 8:00; Sec. C, T., Th., 8:55; Sec. D, T., Th., 1:15.

51, 52, 53. *Fundamentals of Christian Belief*. An introductory course in the evidences and principles of Christianity, consisting of a study of the basic concepts of religious faith and practice, and comprehensive groundwork in the fundamental doctrines held by the Seventh-day

---

\* During the year 1941-42 Advanced Doctrines I will continue to be taught for students who had *Daniel and Revelation* in their freshman year.

Adventist denomination. Lectures, text book assignments, and library work. Two credits; autumn, winter, spring; Sec. A, T, Th., 8:00; Sec. B, T, Th., 1:15.

\*101-102-103. *Daniel and Revelation*. An exegetical study of these two books of the Bible. Special attention is given to the fulfillment of their prophecies and the messages they contain, for the church and for our own lives. A knowledge of history and of the fundamentals of Christian faith is presupposed for this course. Intended for the general college student. Two credits; autumn, winter, spring.

\*\*105, 106, 107. *Advanced Bible Doctrines I*. This course emphasizes the Christian doctrines. Some of the points stressed are: the existence of God, the inspiration of the Bible, the Spirit of Prophecy manifested in God's remnant church, the second coming of Christ, the state of the dead, the meaning of conversion and redemption, the Sabbath, and similar truths. Text book assignments, lectures, library work. Two credits; autumn, winter, spring; Sec. A, T, Th., 8:55; Sec. B, T, Th., 10:30.

111-112-113. *Daniel and Revelation*. An advanced course in the study of these books, noting particularly their symbolism and the intimate ways in which they are related to all Old Testament and New Testament prophecy. A more extensive work is done in prophecies relating to world history, showing their fulfillments and applications. Special emphasis is placed upon the messages which these books have for the church and for our own lives. This course is primarily intended for theological students whose aim is the proclamation of the gospel message for the last days and for the culmination of the hope and the proclamations of these books. A fair knowledge of history is presupposed and research in this field will be required. Lectures, discussions, collateral reading, themes. Three credits; autumn, winter, spring; M. W. F., 1:15.

121-122-123. *Denominational History and Spirit of Prophecy*. A survey of the history of the Seventh-day Adventist movement with attention of the administration of the denomination. A study of the Spirit of Prophecy in its relation to the origin and progress of the church and its work; the Bible background for its manifestation and the relations of its writings to the Holy Scriptures; a limited topical study of the teachings of these writings. Lecture course, with reading requirements and theme work. Two credits; autumn, winter, spring; M. W., 8:55.

\*131-132-133. *New Testament Epistles*. An exegetical study of the epistles of the New Testament, attention being given in each case to the time, the circumstances, and the place of writing. Special prominence is given to the books of Romans, Galatians, James, and Hebrews, stressing the fundamental gospel doctrines of these epistles. Such others of the New Testament books, or portions of them, which especially deal with fundamentals, will be studied. Lectures, library assignments, and theme work. Three credits; autumn, winter, spring.

135-136-137. *Hebrew Prophets*. A study of the major and minor prophets from the view point that these things "were written for our admonition upon whom the ends of the world are come." Attention to the historical setting of the prophecies, with careful exegetical study of

\* Not offered in 1941-42.

\*\* Because of readjustment of the Bible courses, this class will be offered during 1941-42 only to accommodate students who have not taken Fundamentals of Christian Belief during their sophomore year. Thereafter Fundamentals of Christian Belief will take its place.



the text, emphasizing the fundamentals of the gospel as contained therein. Collateral reading, theme work. Three credits; autumn, winter, spring; M. W. F., 8:55.

141. *Church Polity*. This course deals with the problems of organization and deliberative procedure in the Seventh-day Adventist denomination. It is a study of the principles of church organization, their divine origin, and their application to present conditions. The course includes a careful and detailed study of the organization of churches and conferences with all their departments, their operation and their inter-relationship. Two credits; autumn; T. Th., 11:25.

142-143. *Homiletics I*. A study of the work of the preacher and his preaching. Biblical topics will be organized for presentation, and outlines prepared. The work of the pastor, the evangelist, and the Bible worker will be discussed. Two credits; winter, spring; T. Th., 11:25.

141A-142A-143A. *Field Work Seminar I*. An introduction to the practical work of the gospel minister. Students are assigned in small groups to various nearby churches, where they gain experiences in performing ministerial work, in preaching, and in leading church members into more active lines of Christian service. This is the field work assignments for class No. 141, 142-143. One credit; autumn, winter, spring.

151. *Archaeology and the Bible*. A study of the service which archaeology has rendered to the Bible. This will include a presentation of archaeological methods, a survey of excavations in Bible lands, and the results obtained in the decipherment of ancient languages, in information for the history and culture of Bible times, and in understanding of customs and habits. Specific attention is given to facts significant for the Bible student: how the Bible has been illuminated, clarified, and confirmed by ever increasing discoveries. Lectures, pictures, topical studies, collateral reading. Three credits; autumn; M. W. F., 10:30.

152. *The Ancestry of the Bible*. A study of the transmission and translation of the Bible including the formation of the Old and New Testament canon. Some characteristics of the original languages, the principal manuscripts and their history; early versions and their importance; the translations into modern languages; the making of the English Bible; recent work on manuscripts and translations. Three credits; winter; M. W. F., 10:30.

153. *World Religions*. A short study of the greater religions of mankind. Consideration is given to the historical setting out of which these religions arose; their founders, their basic teachings and rituals, their conceptions of God and man. With this is included discussions of similarities and contrasts to the Christian faith, as well as present-day conditions which are of value in the study of missions. Three credits; spring; M. W. F., 10:30.

161, 162, 163. *Systematic Theology*. More extensive study of essential Christian doctrines with emphasis upon Bible doctrines especially valuable to the Christian believer. Subjects stressed are: union with Christ, conversion, justification, sanctification, Christ's ordained church, baptism, the Lord's supper, the second advent of Christ, the resurrection and reward of the righteous and punishment of the wicked, the earth restored, God's people forever with Him. During the spring quarter special studies and

lectures on the Atonement and the Sanctuary will be given. Text book assignments, collateral reading, lectures, and discussion. Three credits; autumn, winter, spring; M. W. F., 11:25.

\*171-172-173. *Church History*. A course tracing the development of organized Christianity and its influence upon the thought and life of the world. From the apostolic era to the modern age the varying progress of the church will be traced, with special emphasis upon the spiritual declension following the nominal conversion of Constantine; the great schism between East and West; the rise and development of the papal supremacy; efforts at reform within the Catholic Church; the Reformation; the divisions within the Protestant movement; modernism and kindred tendencies in the churches today. Text book assignments, collateral reading, class room discussion. Three credits; autumn, winter, spring; M. W. F., 8:00

181-182-183. *Homiletics II*. Advanced study in the art of preaching, aiming at some proficiency in Bible exegesis and evangelism. Detailed attention will be given to the various phases of evangelistic work and the problems which confront an evangelist. Guidance will be given in methods of evangelistic advertising, the conducting of public efforts, church organization, and pastoral work. This course is definitely planned for young men who desire to make the gospel ministry their vocation. Three credits; autumn, winter, spring; M. W. F., 10:30.

181A-182A-183A. *Field Work Seminar II*. An introduction to the practical work of the Christian evangelist. Students are assigned in small groups to conduct gospel efforts in nearby towns and cities, so that they may learn successful methods of bringing men and women to a knowledge of good news about Jesus Christ and His soon coming. This is the field work assignments for class No. 181-182-183. One credit; autumn, winter, spring.

\*197-198-199. *Methods of Bible Teaching*. A study of the principles of Bible instruction, particularly in teaching as applied to Bible subjects as usually given in the preparatory curriculum. This course essential for students who wish to obtain denominational teacher's certification, in Bible subjects. One credit; autumn, winter, spring.

## ART

Mrs. Miller

1, 2, 3. *Art*. Classes in oil, water color, and pastel are offered, in which are taken up the study of color and color combination. "The world is not seen in grays, and an exquisite source of pleasure is to be taken in the arrangement and varieties of colors which it offers." One or two credits; autumn, winter, spring; M. T. W. Th. F., 8:55; M. T. W. Th., 10:30; T. 1:15-3:00.

6, 7, 8. *China Painting*. Experience in china painting and a knowledge of the various kinds and makes of china; original designs developed. A knowledge of china painting and the composition of china ware is of value to the student in assisting him to discriminate between good and inferior in the commercial world. China painting develops originality, neatness, and carefulness. One credit; autumn, winter, spring; W., 1:15-4:00.

\* Not offered in 1941-42.

9, 10, 11. *Lettering*. Formulation of certain broad principles on which the student may work, both in regard to the making of letters and their application to practical use. A brief history of letters and their classification is included in the course. With the fundamental principles learned it will be found easy to make many modifications and the possibilities are as unlimited as in any art. One-half credit; autumn, winter, spring; T. Th., 8:00.

\*12, 13, 14. *History of Art*. Lectures and study on history of art will consist of the following: Egyptian art and design; Grecian art; Roman art and appreciation; French and English Gothic architecture and sculpture; Japanese design. The course presents the work of some of the most notable modern painters and designers. Two credits; autumn, winter, spring.

21, 22, 23. *Chalk Illustrating*. Intended primarily for use in illustrating sacred songs and readings. Especially valuable to teacher-training and theological students. One-half to one hour credit; autumn, winter, spring; T., 1:15-3:00.

## BIBLICAL LANGUAGES

Mr. Lindsjo

For a major in Biblical Languages 45 credits are required, of which 18-21 credits must be upper division work.

For a minor in Biblical languages 30 credits are required, of which 9 credits must be upper division work.

1-2-3. *Greek I*. A beginning study in the use of the New Testament in its original language by Bible students. While giving the fundamentals of the Greek language emphasis will also be placed on an introduction to the cultural and religious backgrounds and environments of the language of the New Testament, to make words and expressions from the life out of which they came. Readings of selected portions, introduction to aids and methods, grammar study, beginnings of exegesis. Four credits; autumn, winter, spring; M. T. W. Th., 8:55.

51, 52, 53. *Greek II*. An extension of Greek I. Rather extensive reading in the gospels, Revelation, and Acts of Apostles. Texts of special interest will be studied in class. More emphasis on exegesis and interpretation, particularly with a view of usefulness for ministers and teachers. Three credits (1941-42); autumn, winter, spring; M. W. F., 8:00.

\*101. 102. 103. Reading and exegesis of Pauline epistles. Three credits; autumn, winter, spring.

## II. HEBREW

\*131-132-133. *Hebrew I*. Reading of selected portions of the Old Testament in Hebrew with the study of the elements of the Hebrew grammar. Introduction to methods and aids for a fruitful use of the Hebrew in Bible study. Four credits; autumn, winter, spring; M. W. F., 8:00. (Tuesday to be arranged.)

\*134-135-136. *Hebrew II*. More extensive reading in the Hebrew historical books and selected portions from the Prophets and the Psalms. Greater sureness in the grammar, study of the syntax. Three credits; autumn, winter, spring; to be arranged.

\* Not offered in 1941-42.



## BIOLOGY

Mr. Booth, Miss Marsh

Requirements for a major in biological science:

- (1) A minimum of 45 credits, 25 of which must be upper division;
- (2) Courses 1, 1A, 2, 2A, 11, 158, 195, 196, 197 are required of all majors.

Requirements for a minor in biological science:

- (1) A minimum of 27 credits, 12 of which must be upper division.
- (2) Courses 1, 1A, 2, 2A, 11 are required of all minors.

1-2. *Elementary Zoology*. A general survey of the animal kingdom with special emphasis on the principals of biology. Three hours attendance. Three credits, autumn, winter; M. W. F., 8:55.

1A-2A. *Zoology Laboratory*. A laboratory course to accompany *Elementary Zoology*. This course gives first hand information on many of the type forms. Four hours attendance. One credit, autumn, winter.

6-7. *Microbiology*. The nature of bacteria and disease-producing organisms with their life habits and methods of reproduction. The relation of these organisms to disease in the human body. Two hours attendance, four hours laboratory. Three credits; winter, spring; M. W., 8:55.

11. *Elementary Botany*. A general survey of the plant kingdom with emphasis on morphology, life histories, and development. Three hours attendance, four hours laboratory. Four credits, spring; Sec. A., M. W. F. 8:00; Sec. B., M. W. F., 8:55.

15-16-17. *Anatomy and Physiology*. A course open only to pre-nursing and pre-dietetics students. A general survey course in which anatomy and physiology are given equal emphasis. Three hours attendance, two hours laboratory. Three credits; autumn, winter, spring; M. W. F., 8:00.

55. *Survey of Biology*. A general survey of the animal and plant kingdoms, with special emphasis on the principles of biology. Three hours attendance, four hours laboratory. Four credits; autumn; M. W. F., 8:00.

102-103. *College Physiology*. A survey of physiology with a background of anatomy. Two hours attendance, four hours laboratory. Three credits; winter, spring; T. Th., 8:55.

105-106. *Morphology of Plants*. Detailed studies of the type forms of the main plant groups. Autumn quarter: Thallophytes and Bryophytes; winter quarter: Pteridophytes and Spermatophytes. Three hours attendance, four hours laboratory. Four credits; autumn, winter; T. Th., 10:30, W., 1:15.

107. *Taxonomy of Plants*. Principles of classification of plants with emphasis on the Spermatophytes. Three hours attendance, four hours laboratory. Four credits; spring; T. Th., 10:30, W., 1:15.

115. *Vertebrate Embryology*. A detailed study of the embryology of the frog, chick, and pig, with emphasis on their relation to human

embryology. Two hours attendance, four hours laboratory. Three credits; autumn; T. Th., 8:55.

121. *Microscopical Technique*. A course designed to cover the most important methods of technique in making microscope slide preparations of plant and animal tissues. One hour attendance, eight hours laboratory. Three credits; any quarter. (Time to be arranged.)

\*124. *Histology*. A systematic study of vertebrate histology with emphasis on human histology. Two hours attendance, four hours laboratory. Three credits; winter.

\*135. *Invertebrate Zoology*. A systematic study of marine, fresh-water invertebrates, and insects. Prerequisite: courses 1-2, or 55. Three hours attendance, four hours laboratory. Four credits; spring; T. Th., 10:30; M., 1:30.

\*151. *Sanitary Bacteriology*. Fundamental public health bacteriological procedures on foods, water, milk, blood, etc. Prerequisite, Bacteriology 6-7. Two hours attendance, two four-hour laboratories. Four credits; autumn; T. Th., 10:30.

\*155. *Vertebrate Zoology*. A systematic study of amphibians, reptiles, and birds, with emphasis on taxonomy and geographical distribution. Prerequisite: courses 1-2, or 55. Two hours attendance, four hours laboratory. Three credits; spring; T. Th., 8:55.

\*157. *Vertebrate Zoology*. A systematic study of mammals with emphasis on taxonomy and geographical distribution. Prerequisite: courses 1-2. Two hours attendance, four hours laboratory. Three credits; autumn; T. Th., 8:55.

\*156. *Ecology*. The study of principles governing the distribution of plants and animals; studies of typical biotic associations; problems of classification and change of species due to isolation. Prerequisite: courses 1-2, or 55. Two hours attendance, four hours laboratory. Three credits; winter; T. Th., 8:55.

158. *Genetics*. A study of the principles of heredity in plants and animals with emphasis on the aspect of special creation as opposed to organic evolution. Prerequisite courses 1-2 or 55. Three credits; winter; M. W. F., 8:00.

\*175. *Field Ecology*. Given in connection with the Field Nature School. At least three weeks are spent in field study of selected areas in the Northwest. Members of the school camp at various study localities. The time varies but the usual time for the school is during July or August. Prerequisite: course 1-2, 55, or 75. Beginners should register for course 75. Two to four credits; summer. Given in the summer, 1943.

\*177-178. *Parasitology*. A systematic study of the morphology, life cycle, and the medical aspects of the protozoon, arthropod, and worm parasites of the vertebrates with more emphasis on human parasitology. Prerequisite: courses 1-2, or 55. Two hours attendance, four hours laboratory. Three credits; autumn, winter; T. Th., 10:30.

---

\* Not offered in 1941-42.

195. *History of Biology*. A survey of the history of biological work from the Greek period to the present. Two hours attendance. Two credits; autumn. (Time to be arranged.)

196-197. *Seminar*. A study of the current biological literature, and the teaching of biology with practical experience in teaching. Two hours attendance. Two credits, winter, spring. (Time to be arranged.)

199. *Research Problems*. Individual research work to be carried on under supervision of the instructor. Time and credit to be arranged.

## NURSING EDUCATION AND HEALTH

15. *Health Principles*. A study of health promotion including the underlying principles governing the harmonious development of the human body, and also the prevention and control of communicable diseases. Stresses both personal and community health. Three credits; autumn; Sec. A, M. W. F., 8:55; Sec. B, M. W. F., 10:30. Winter: Sec. C, M. W. F., 10:30. Four credits; spring; M. W. F., 10:30, other hour to be arranged.

\*16-17. *Practical Hygiene and First Aid*. Theoretical and practical instruction in nature and cause of illness, care of the sick, hydrotherapy and Red Cross first aid. A thoroughly practical course every college student should take. Those completing this course will receive the General Conference Home Nursing certificate. Class one hour each week. Laboratory three hours each week. Two credits; autumn, winter.

21-22-23. *History of Nursing*. A survey course in nursing history, following the trends which have led to the present-day developments, based on world history, denominational history, and the status of women down through the ages. Stress is laid upon the present trends in nursing history. Two credits; autumn, winter, spring; T. Th., 10:30.

121. *Methods in Nursing Education*. A study of methods of teaching with application to situations in schools of nursing. Ward methods and planning of integrated theoretical, practical and clinical programs. Laboratory methods studied. Three credits; autumn quarter; M., 5:00-6:00, W., 4:00-6:00.

122. *Health Administration*. A study is made of the administration of health programs in elementary schools, secondary schools, and colleges. Participation in health activities is included. Three credits; winter; M., 5:00-6:00, W., 4:00-6:00.

123. *Supervision*. A study is made of the qualifications and functions of supervisors, with emphasis upon the newer methods of ward teaching. Three credits; spring; M., 5:00-6:00, W., 4:00-6:00.

124. 125. 126. *Seminar*. Problems in nursing education discussed in light of modern trends in nursing education. One credit; autumn, winter, spring; M., 4:00-5:00.

---

\* Not offered in 1941-42.



## BUSINESS ADMINISTRATION SECRETARIAL SCIENCE

Mr. Cubley, Miss Walker

Requirements for the major in Business Administration:  
*Prerequisite*: College entrance requirements and one credit in elementary bookkeeping.

(A) FRESHMAN COURSES:

- 1-2-3. *General Economics*. Nine credits.
- 7-8-9. *Remedial Penmanship*. No credit.
- 11-12-13. *Typewriting*. Three credits.
- 14-15-16. *Principles of Accounting*. Six credits.

(B) SOPHOMORE COURSES:

- 61-62-63. *Business Law*. Six credits.
- 64-65-66. *Business Correspondence*. Three credits.
- 71-72-73. *Principles of Accounting*. Six credits.

(C) UPPER DIVISION COURSES:

A minimum of 29 credits in Business Administration courses numbered above 100.

Note: Women who major in Business Administration are required to minor in Secretarial Science.

Requirements for the minor in Business Administration:

(A) FRESHMAN COURSES:

- 1-2-3. *General Economics*. Nine credits.
- 14-15-16. *Principles of Accounting*. Six credits.

(B) SOPHOMORE COURSES: (Elect six credits)

- 61-62-63. *Business Law*. Six credits.
- 71-72-73. *Principles of Accounting*. Six credits.

(C) UPPER DIVISION COURSES: (Elect ten credits)

- 101-102-103. *Marketing*. Six credits.
- 151-152-153. *Advertising*. Six credits.
- 198-199. *Methods in Teaching Bookkeeping*. Two credits.

Requirements for the major in Secretarial Science:

*Prerequisite*: College entrance requirements and one unit in elementary bookkeeping.

Credits must be presented as follows:

- Typewriting*. 6 credits.
- Shorthand*. 21 credits.
- Business Correspondence*. 3 credits.
- Secretarial Training*. 6 credits.
- Introduction to Business*. 3 credits.
- Methods in Teaching*. 4 credits.
- Reading and Conference*. 2 credits.

Note: One minor must be in Business Administration. It is suggested that the second minor be in English or Home Economics.

A minor in Secretarial Science requires the following credits:

Shorthand I .....	9 credits
Shorthand II .....	6 credits
Typing II .....	3 credits
Secretarial Work .....	6 credits
Pro-Seminar .....	4 credits
Advertising .....	6 credits

Students graduating from commercial high schools and having met the requirements for Shorthand I, will add advanced dictation to the above requirements.

1-2-3. *General Economics*. General principles of economics and their application to our present industrial organization and social life. A study of the factors of production; organization of marketing and transportation; principles of money and banking; distribution of wealth; taxation; and problems of labor. Three credits; autumn, winter, spring; M. W. F., 10:30.

4. *Business Behavior and Ethics*. A course in personal development designed to impress the student with the importance of this phase of his college education and to acquaint him with its basic principles. One credit; autumn; T., 10:30.

5. *Filing*. A course in the general principles of filing with detailed study of the alphabetic, subject, geographic and numeric systems. One credit; winter; T., 10:30.

6. *Consumer Education*. A basic course in the principles underlying consumer education and an introduction to topics that demand specific attention. One credit; spring; T., 10:30.

11-12-13. *Typewriting*. Theory and practice of touch typing; frequency drills; rhythm drills; business letter forms; tabulating; manifolding; statement work; figures; speed practice. Speed requirement for three credits: 50 words per minute. Three class periods per week; two laboratory periods per week. One credit; autumn, winter, spring; M. W. F., 8:55.

14-15-16. *Principles of Accounting I*. Introduction to accounting; books of original entry; ledgers; statements of condition and of operations; controlling accounts. Sole proprietorships and partnerships. Prerequisite: One unit of bookkeeping. Two credits; autumn, winter, spring; M. W., 8:00.

21-22-23. *Shorthand*. Theory of Gregg shorthand; practical application of theory in dictation; developing speed in writing, reading, and transcribing. Typing 11-12-13 must be taken concurrently with this course unless the student has had the equivalent. Speed requirement: 100 words per minute with satisfactory transcription. Three credits; autumn, winter, spring; M-F., 8:00.

51-52-53. *Advanced Shorthand*. Advanced application of principles and phrases of Gregg shorthand; dictation and transcripts covering vocabularies of representative businesses; legal forms, civil service and denominational dictation. Prerequisites: courses 21-22-23 or equivalent. Speed requirements: 120 words a minute with satisfactory transcription. Two credits; autumn, winter, spring; M. W. F., 10:30.

57-58-59. *Secretarial Work*. Training in general office procedure; practical use of modern office appliances. Training in secretarial duties; secretarial ethics. Prerequisite: B. A. 13 and B. A. 23. Class two hours; three hours laboratory per week. Two credits; autumn, winter, spring; T. Th., 2:10.

\*61-62-63. *Business Law*. Fundamentals of those branches of law which affect business transactions. Emphasis on contracts and negotiable instruments. Two credits; autumn, winter, spring.

64-65-66. *Business Correspondence*. A course in English organized primarily for students preparing for a business career. Special emphasis is placed on business correspondence. Prerequisite: English 1-2-3. Class one hour. One credit; autumn, winter, spring; T., 10:30.

71-72-73. *Principles of Accounting II*. A continuation of B. A. 14-15-16. The voucher system; corporation accounting; introduction to cost accounting and consolidated statements. Prerequisite: B. A. 14-15-16. Two credits; autumn, winter, spring; T. Th., 8:55.

77-78-79. *Advanced Typewriting*. A continuation of typewriting 11-12-13. Emphasis placed upon increase of speed, accuracy, and skill. Entrance requirement: student must establish a net speed of 40 words in three consecutive daily tests. These entrance tests will be given at the close of the second week of the autumn quarter. Speed requirement for three credits; 65 words per minute based upon international rules. Three class periods; two laboratory periods per week. One credit; autumn, winter, spring; M. W. F., 11:25.

\*101-102-103. *Marketing*. Marketing functions; classes of middlemen; types of selling organization; marketing farm products, raw materials and manufactured goods; retail distribution; cooperative marketing. Two credits; autumn, winter, spring; T. Th., 1:15.

\*111-112-113. *Advanced Accounting I*. Problems of single entry; preparation of working papers, balance sheets, and profit and loss statements; advanced partnership and corporation problems; profits; dividends; sinking funds; bonds; study of insolvency; appraisals and valuation of assets; corporation securities. Prerequisite: Course 71-72-73. Three credits; autumn, winter, spring.

115-116-117. *Advanced Dictation*. Vocabulary study; advanced phrase writing; speed dictation and transcription. Prerequisite: Courses 51-52-53 or equivalent. Speed requirement: 140 words a minute with a satisfactory transcription. Two credits; autumn, winter, spring; time to be arranged.

151-152-153. *Advertising*. Creating demand; psychology, science, and art of advertising; national advertising; media; copy; typography; laboratory problems in school publication and evangelistic advertising. Two credits; autumn, winter, spring; T. Th., 8:00.

161-162-163. *Advanced Accounting II*. Problems involving mergers, holding companies, consolidated statements; estate accounting; auditing procedure; balance sheet audits; profit and loss audits; analysis of asset and liability values; auditor's certificates, reports and responsibilities. Prerequisites: courses 111-113. Three credits; autumn, winter, spring; M. W. F., 11:25.

\* Not offered in 1941-42.



171. *Reading and Conference.* Directed reading in secretarial and related fields. Open only to advanced students. Time and credits to be arranged.

191. *Methods in Teaching Typing in the Secondary Schools.* This course is required of all majors. One credit; autumn; M., 1:15.

194. *Methods in Teaching Shorthand in the Secondary Schools.* This course is required of all majors in secretarial science. One credit; winter; M., 1:15.

198-199. *Methods in Teaching Bookkeeping in the Secondary Schools.* This course is required of all majors. One credit; winter, spring; M., 1:15.

## CHEMISTRY

*Mr. Thurston, Mr. Bowers*

Requirements for a major in chemistry:

A. Credits must be presented in each field of chemistry as follows:

General inorganic chemistry	12 credits
Organic chemistry	15 credits
Qualitative	6 credits
Quantitative	9 credits
Physical chemistry	10 credits

B. A minimum of 24 upper division credits must be presented.

C. Minor fields should be in Mathematics, Physics, or Biology. A double minor is recommended. Special permission from the major professor must be obtained for any other minor.

1. Mathematics should be elected in the freshman year.

2. Physics should be elected in the sophomore year.

Requirements for a minor in chemistry:

A. Courses 1-2-3 and 51-52-53 are required.

B. A minimum of 27 hours is required including three hours of upper division courses.

1-2-3. *General Chemistry.* A systematic study of typical metals and non-metals together with a survey of all the elements. Emphasis is placed on fundamental principles and theories. Three hours attendance. Three credits; autumn, winter, spring; Sec. A., M. W. F., 8:00; Sec. B, M. W. F., 8:55.

1A-2A-3A. *General Chemistry Laboratory.* This course accompanies chemistry 1-2-3. It includes typical laboratory preparations and elementary experiments. During the third quarter metal analysis is begun. Four hours attendance. One credit; autumn, winter, spring.

4-5-6. *Pre-Nursing Chemistry*. This course is a study of the principles and applications of chemistry which are valuable for the nursing profession. No attempt is made to survey the whole field of chemistry. This course does not fulfill the physical science requirement for a degree. Two or three hours attendance. Two credits; autumn, winter, spring; M. W. F., 10:30.

4A-5A-6A. *Pre-nursing Chemistry Laboratory*. This course accompanies chemistry 4-5-6. The laboratory experiments include typical inorganic, organic, and biochemical preparations and properties. Three hours laboratory. One credit; autumn, winter, spring.

51-52-53. *Elementary Organic Chemistry*. A study of the preparation, reactions, and constitutions of the aliphatic and aromatic compounds of carbon. Prerequisite: Chemistry 3. Two hours attendance. Two credits; autumn, winter, spring; T. Th., 10:30.

51A-52A-53A. *Experimental Organic Chemistry*. A laboratory course to accompany chemistry 51-52-53. The work includes the application of laboratory principles and procedures as well as the preparation of a large number of typical compounds. One 4-hour period per week. One credit; autumn, winter, spring.

62. *Elementary Qualitative Analysis*. This course outlines the general principles underlying qualitative analysis of the anions with a review of the cations. Emphasis is also placed on chemical arithmetic. Prerequisite: Chemistry 3. Two hours attendance. Two credits; winter, T. Th., 11:25.

62A. *Analytical Laboratory*. The characteristic reactions of the anions are studied in detail. The analysis of unknowns is a required part of the course and helps to train the student in systematic and individual analysis. Four hours laboratory. One credit; winter.

63. *Elementary Quantitative Analysis*. This course outlines the general principles of gravimetric and volumetric analysis. Emphasis is also placed on the solution of problems involving the laboratory standardization and determination of unknowns. Prerequisite: chemistry 3. Two hours attendance. Two credits; spring; T. Th., 11:25.

63A. Solutions are standardized and unknowns are determined by typical gravimetric and volumetric procedures. Four hours laboratory. One credit; spring.

73. *Biochemistry*. A study of foods and products of metabolism. An attempt is made to trace the chemical change in the animal organism. Prerequisite: Chemistry 52. Three hours attendance. Three credits; spring; M. W. F., 11:25.

\*73A. *Biochemistry Laboratory*. General experiments on foods are followed by many clinical tests including blood and urine analysis. Prerequisite: Chemistry 52A. Four hours attendance. One credit; spring; hours to be arranged.

101. *Qualitative Analysis*. A study of the tests and methods employed in qualitative analysis, and analysis of liquid and solid unknowns. Pre-

\* Not offered in 1941-42.

requisite: Chemistry 62. Eight hours laboratory. One hour attendance. Three credits; autumn; hours to be arranged.

112, 113. *Quantitative Analysis*. This course includes the study of typical gravimetric and volumetric methods, and the practical examination of ores and commercial products. Prerequisite: course 63. Eight hours laboratory and one hour Seminar. Three credits; winter, spring; hours to be arranged.

\*151-152. *Physical Chemistry*. An introductory course in theoretical and electrochemistry. Prerequisite: Physics 3, Chemistry 63, and Mathematics 53. Three hours attendance. Three credits; autumn, winter; M. W. F., 11:25.

\*151A-152A. *Practical Physical Chemistry*. This course provides a series of experiments covering the fundamental topics of theoretical chemistry. Experiments involve the various physical properties of matter and their constants. The latter part of the course deals with electrochemistry. Eight hours laboratory; two credits; autumn, winter.

161. *Aliphatic Series*. An advanced course covering the open chain compounds of carbon in which a critical study is made of the structure, preparation and properties of the aliphatic compounds. Prerequisite: Chemistry 53. Two hours attendance. Two credits; autumn; time to be arranged.

161A. *Aliphatic Laboratory*. A study of the laboratory procedures and preparation of a series of straight chain carbon compounds. Four hours; 1 credit; autumn; time to be arranged.

162. *Aromatic Series*. An advanced course covering the benzene series and related compounds. A detailed study is made of the structure of benzene together with a consideration of orientation in the benzene nucleus. Prerequisite: Chemistry 53. Two hours attendance. Two credits; winter; time to be arranged.

162A. *Aromatic Laboratory*. This course includes the actual preparation of several typical compounds together with a study of their preparations and uses. Four hours; One credit; winter; time to be arranged.

197, 198, 199. *Teachers' Special Methods in Chemistry*. Methods in teaching and in the conduct of the laboratory. The objectives in classroom, as well as in laboratory teaching, are discussed and practice in both is undertaken. Open to those who select a major in chemistry. Two credits; autumn, winter, spring; time to be arranged.

## EDUCATION

*Miss Neilsen, Mr. Sittner, Miss Foreman*

1. *Introduction to Education*. A study of school practice and management, dealing especially with types of lessons, organization and the functions and principles of education. Three credits; autumn; M. W. F., 10:30.

5. *Principles of Education*. A study of the underlying principles of Christian education. Three credits; spring; Sec. A, M. W. F., 8:00; Sec. B, M. W. F., 2:10.

\* Not offered in 1941-42.



8. *Educational Psychology I*. This course presupposes a knowledge of the general principles of the science of psychology, and deals especially with the application of those principles to the art of teaching. Three credits; winter; M. W. F., 10:30.

62, 63. *Principles of Geography*. A general knowledge of the field of geography. The human, as well as the physical and commercial phases will be stressed. Three credits; winter, M. W. F., 10:30: two credits; spring; M. W., 10:30.

111. *Child Life and Problems*. A study of the most significant facts and principles of the mental and physical development of the child, together with the psychological laws that govern child behavior. Three credits; autumn; M. W. F., 11:25.

112. *Philosophy of Education*. A study of the basic principles and development of true education resulting in the formulation of aims and objectives of education for a Christian society. Three credits. Winter; M. W. F.

121. *Secondary Education*. The evolution, scope, and functions of secondary education, including the field of the junior high school, the junior college, denominational schools, and other educational agencies in relation to social needs; it presents particularly the purpose, objectives, and attainable goals for secondary schools, and the several curriculum offerings. Prerequisite: Junior standing. Three credits; autumn; M. W. F., 8:55.

122. *Secondary School Administration and Supervision*. A course which presupposes some familiarity with problems of administration and supervision. An intensive study of more important problems of constructive organization in secondary education and the improvement of school work. Prerequisite: Course 121 or the equivalent. Three credits; winter; M. W. F., 8:55.

129. *School Home Administration*. A course open to a limited number of students chosen by the instructor from the classes in Human Relations and Cultural Foundations. It is designed especially for those interested in school home work in boarding schools, and covers the development, mission, and organization of school homes with emphasis on the fostering of spiritual and cultural ideals and leadership in the light of the educational standards of Seventh-day Adventists and the recent developments in the field of personnel work. Two credits; spring; T. Th.

132. *Psychology of Learning*. The course includes an analysis of the mechanisms involved in the learning process. The physiological and psycho-physical bases for functional learning are discussed, and the experimental evidence supporting psychological hypotheses are reviewed. Three credits; winter; M. W. F., 11:25.

136. *Educational Tests and Measurements*. Designed to give the student a comprehensive view of the uses of standard tests and scales in elementary and secondary subjects, the value and limitation to the teacher and supervisor of these tests, and their statistical treatment. Opportunity will be provided for the application of the scales and studies. Prerequisite: General or educational psychology. Three credits; spring; M. W. F., 10:30.

139. *Adolescent Life and Guidance*. Principles and methods involved in educational, vocational, and general guidance of the adolescent pupil.

Special emphasis is given to the nature and behavior of adolescents leading to facility in understanding and teaching pupils at the secondary level. Prerequisite: General and Educational Psychology. Three credits; spring; M. W. F., 8:55.

\*141. *The Secondary School Curriculum*. The relation of curricular materials to educational outcomes in terms of personal and social values. A brief review of curriculum investigations and their significance in the selection and evaluation of secondary school materials and activities. Current practices in curriculum revision. Prerequisite: General or educational psychology and Course 121. Two credits; spring; T. Th., 10:30.

\*153. *History of Education*. This course gives the student an outline of the leading educators and of the educational developments from ancient times to the present. Emphasis will be placed upon modern educational development. Three credits; spring; M. W. F., 8:00.

### ELEMENTARY TEACHER TRAINING

Miss Neilsen

Miss Johnson, Miss Searle, Miss Smith, Mrs. Lindsjo

2. *Principles of Mathematics*. A background of information, with the methods which will enable the teacher to enrich the arithmetic work of all grades. Three credits; winter; M. W. F., 10:30.

11. *Teaching of Art*. A course to prepare the teacher to direct activities in the school room such as clay modeling, poster-making, art, lettering, crayola, pencil, watercolor, and blackboard drawing, crafts and appreciation. Three credits; time to be arranged.

12. *Industrial Arts*. Covering the teaching in the grades of elementary woodwork, home economics, and agriculture. Five credits; time to be arranged.

71. *Teaching Techniques*. Objectives and modern methods in the teaching of reading. Three credits; autumn; M. W. F., 8:55.

72. *Teaching Techniques*. A course giving the teaching procedures in the related fields of the language arts, literature, grammar, spelling, and writing. Three credits; winter; M. W. F., 8:55.

73. *Teaching Techniques*. Materials, objectives, and methods used in teaching social studies in the grades. Chosen from the fields of geography, sacred and secular history, and civics. Three credits; spring; M. W. F., 8:55.

81, 82, 83. *Directed Teaching I*. Observation and teaching in the Training School. Problems of method, management, and testing of achievement are met and solved in practical class room situation. Enrollment only with permission of the Director of the Training School. Prerequisite: Scholarship average of C. One credit; autumn, winter, spring; M-F. Time to be arranged for each student.

101-102-103. *Directed Teaching II*. Observation and teaching in the Training School. Each student is expected to take full charge of his class and is responsible for the progress of the child during his teaching time. Enrollment only with permission of the Director of the Training School. Prerequisite: Scholarship average of C. Total possible seven credits for autumn, winter, spring. Time to be arranged for each student.

\* Not offered in 1941-42.

104. *Diagnostic and Remedial Teaching.* A study presenting modern techniques in the adaptation of instruction to individual differences. Case work and detailed diagnostic procedures in the elementary subjects will be emphasized. Three credits; autumn; M. W. F.

### SECONDARY TEACHER TRAINING

*Mr. Sittner, Mr. Haussler, Miss Beatty, Miss Scott*

143. *Techniques in Secondary Subjects.* This course is open to juniors who have definitely decided to go into denominational teaching. The purpose of the course is to develop a sound and practical understanding of the teaching experience and to assist the student in acquiring and evaluating effective procedures of instruction based upon the results of modern investigations. Two credits; spring; T. Th., 8:55.

163. *Observation and Directed Teaching.* The principles and practices of secondary teaching will be examined in the light of practical experience gained through observation and supervised participation in school activities. Actual school situations will be provided for laboratory purposes. Class discussions will be concerned with the problems common to all teaching situations. Prerequisite: Senior standing and 15 credits in Education. Three credits; winter or spring; time to be arranged.

197L. *Special Methods in Language Arts and Literature.* Education and senior standing. Two credits; autumn; time to be arranged.

197M. *Special Methods in Mathematics and Physical Science.* (Same as 197L.)

197S. *Special Methods in Social Science.* (Same as 197L.)

### PSYCHOLOGY

1. *General Psychology.* This course aims to give the student a knowledge of the most important facts and principles of psychology. It provides a scientific basis for courses in education and an introduction to the field of psychology. Three credits; autumn; Sec. A., M. W. F., 10:30; Sec. B., M. W. Th., 2:10.

### SOCIOLOGY

*Miss Neilsen, Miss Foreman*

2. *Introduction to Sociology.* An elementary study of social organization, the nature of social relations, and the influences that shape society. Three credits; winter.

7. *Human Relations.* A general course designed to acquaint the student with the ethics of proper associations, standards of community life in a Christian college, the responsibilities of a cultured individual in society, and to develop a Christian perspective concerning the problem of marriage and home building. Two credits; autumn; T. Th., time to be arranged.

8. *Cultural Foundations.* A survey of the cultural heritage of the race of the best in music, art, literature, ethics, and other appreciations. Competent guest lecturers will frequently appear before the class. Two credits; winter; T. Th.



## ENGLISH AND JOURNALISM

*Mr. Little, Mr. Lewis, Mr. Aplington, Miss Rogers, Mrs. Little*

This department has four sections: composition, literature, journalism, and speech. A major is offered in literature; minors are offered in English, journalism, and speech. Except for the vocational printing courses in journalism and essentials of speech courses on the freshman level do not apply on a major or minor.

Three groups of upper division courses are arranged as follows:

## GROUP I

Old and Middle English (101-102)  
English Renaissance Literature (107-108)  
Milton (111)

## GROUP II

Neo-Classic Literature (117-118)  
The Romantic Period (121-122)  
The Victorian Period (125-126)

## GROUP III

Literature of the English Bible (152-153)  
American Literary Masters (137, 138, 139)  
Western World Literature (161, 162-163)  
Dramatic Literature (185-186)

## Requirements for a major in English:

	CREDITS
Literary Elements (51) .....	3
American Literature (64-65-66) .....	6
English Literature (74-75-76) .....	9
Historical Grammar and Linguistics (166) [prescribed for those seeking departmental recommendation as teachers] .....	0-3
Pro-seminar (199) .....	3
One writing course above the freshman level .....	6
One full course from each of two upper division groups above .....	7-12
Additional hours selected from the upper division groups above to complete the major total .....	4-12
	<hr/> 45

English history is required of English majors, and American history is recommended.

A minor in English literature shall be made up of not less than 27 credits, 6 of these being in a writing course above the

freshman level and the other 21 in a literature sequence that includes American and English literature surveys.

A minor to accompany an English major should be in a field with logical correlation, such as history, modern language, journalism, speech.

Adjustments in the requirements set forth herein may be made with the approval of the department and the registrar of the college when it is apparent that the student may work to better scholastic advantage with the adjustments.

## COMPOSITION

1-2-3. *Freshman Composition*. Fundamental principles of composition: syntax, effective sentence structure, punctuation, paragraph development, organization of material, writing the various types of themes, and reaction to a reading program. English 1 or 1A will be repeated in the winter, spring, or summer when the need is adequate. Three credits; autumn, winter, spring; M. W. F.: Sec. A, 8:55; Sec. B, 10:30; Sec. C, 11:25; Sec. D, 11:25.

1A-2-3. *Freshman Composition*. This course differs from the preceding one in that during the first quarter only it meets five times a week in order to accommodate those who need a review in fundamentals or extra attention to basic details. Three credits; autumn, winter, spring; M.-F., Sec. E, 11:25; Sec. F, 1:15.

5-6-7. *Teachers' English*. This is a course in grammatical structure and first-year college composition. Enrollment is restricted to prospective elementary and grammar-grade teachers who achieve average standing or better in the Freshman Composition placement test. Credit is not allowed for this course and English 1-2-3 or 1A-2-3. Two credits; autumn, winter, spring; T. Th., 8:00.

85-86-87. *News Writing*. See Journalism 85-86-87. Two credits; autumn, winter, spring.

\*141-142-143. *Literary Composition*. A course for those who like to write and can do so with reasonable facility in such fields (according to the option and ability of the student) as the essay, the dissertation, formal argumentation, persuasion, pieces of imagination, vignettes, and poetry. Enrollment restricted. Two credits; autumn, winter, spring.

145-146-147. *Advanced Journalistic Writing*. See Journalism 145-146-147. Two credits; autumn, winter, spring.

## LITERATURE

\*51. *Literary Elements*. A study of the basic principles, the philosophy and nature of literary art, and the technical terminology together with an analysis of the various forms and types of poetry and prose. This is prerequisite to the literature classes unless the student shows that he has a working familiarity with the elements of literature. Three credits; autumn.

---

\* Not offered in 1941-42.

65-66-67. *American Literature*. A survey of American literature with particular attention to the cultural complexes and philosophies that have characterized the various periods of literary history in this country. Two credits; autumn, winter, spring; T. Th., 8:00.

75-76-77. *English Literature*. A chronological study of English literature with emphasis on the major writers and movements from Beowulf up to about 1900. Literature is correlated with the other fine arts at appropriate times through the course. Three credits; autumn, winter, spring; M. W. F., 8:55.

\*81. *Modern Poetry*. A study of the new movements in English and American poetry from Thomas Hardy up to the present. Two credits; winter.

\*82. *Modern Prose*. A study of the best significant prose of various types in America and England since Victorian dominance. Two credits; spring.

All courses on the junior-senior level have as prerequisites the appropriate lower-division preparation, which varies according to the course and literary preparation of the student in other languages and in history. Consult the department for directions.

\*101-102-103. *Old and Middle English*. An examination and study in its historical setting of English literature from the earliest Anglo-Saxon remains up to about 1450. The Old English works are studied in translation and the Middle English, including Chaucer, largely in originals. Three credits; autumn, winter, spring.

\*107-108. *English Renaissance Literature*. Detailed exploration in the more significant literary works that reflect the essential doctrines of the Renaissance period. Three credits; autumn, winter; M. W. F., 10:30.

111. *Milton*. A study of the poetry and more important prose of John Milton in the historical and cultural setting of the time. Three credits; spring.

\*117-118. *Restoration and Neo-classic Literature*. Neo-classic ideals and achievements as reflected in the chief writers of the time from Bunyan to Johnson. Three credits; autumn, winter.

121-122. *The Romantic Period*. An analytical examination of the emergence of Romantic ideals and their manifestation in literature, beginning with the pre-Romantic school and going to 1832. Three credits; autumn, winter. M. W. F., 10:30.

\*126-127. *The Victorian Period*. An advanced study of the poetry and prose of the men who moulded and reflected characteristic opinion and ideals after the first third of the nineteenth century. Three credits; winter, spring.

137, 138, 139. *American Literary Masters*. An advanced study of a restricted number of American writers who have given significant distinction to American letters. Two credits; autumn, winter, spring; T. Th., 8:55.

\*152-153. *Literature of the English Bible*. Detailed analysis of the technical requirements of Hebrew poetry and prose types, particularly stressing

---

\* Not offered in 1941-42.



those passages that reveal the peculiar literary genius and grandeur of the Bible. Two credits; winter, spring.

\*161, 162-163. *Western World Literature*. Broad outlines of literary history, literary criticism, and reading and examination of the more significant works in the history of human culture. Two credits; autumn, winter, spring.

165. *Historical and Modern Grammar and Linguistics*. This study, designed for English majors and minors who intend to be teachers, includes an elementary survey of linguistics and historical grammar, but the chief emphasis is on present-day grammar and its tendencies. Three credits; spring.

185, 186-187. *Dramatic Literature*. A carefully selected group of dramatic classics, from AEschylus to Ibsen, studied to reveal their literary values and cultural attitudes. About half the time is spent on Shakespeare. Three credits; autumn, winter, spring; M. W. F., 8:55.

197-198-199. *English Pro-seminar*. An integrating course required of English majors in the senior year and recommended to minors. The study includes: aims, methods, and materials of English scholarship; a synthesis of American, English, and comparative literatures; investigation of problems peculiar to the class personnel; group conferences and reports. One credit; autumn, winter, spring.

## JOURNALISM

The department offers a minor in journalism with adequate laboratory work on school publications, projects, and newspaper reporting. To qualify for a minor in this field the student must have a broad cultural course in general college studies. Among his prescribed and elective courses he should include 22 credits of social science, 3 credits of typewriting, 4 credits of psychology, and 15 credits of literature. The head of the department must approve the courses of students minoring in journalism. A thorough mastery of English fundamentals is expected of all taking journalism courses.

11-12-13. *Printing I*. See Printing Department courses 1, 2, 3. Two credits; autumn, winter, spring.

17-18-19. *Printing II*. See Printing Department courses 7, 8, 9. Two credits; autumn, winter, spring.

85-86-87. *News writing*. A practical course in gathering news, writing news stories, simple feature stories, and editorials. Copy editing and other desk exercises are designed to aid the student in developing skill in producing acceptable newspaper copy. Prerequisite: proficiency in English 1-2-3. Two credits; autumn, winter, spring; T. Th., 11:25.

\*140. *History and Ethics of Journalism*. History of Journalism from about 1620 down to the present time with parallel attention to the principles that guide the best newspapers. Three hours; winter.

---

\* Not offered in 1941-42.

145-146-147. *Advanced Journalistic Writing*. An advanced course in writing such publication types as editorials, features, general magazine articles, book reviews, and critical discussions. Two credits; autumn, winter, spring; T. Th., 5:00.

\*150. *Newspaper Problems*. A study of the policies and practices of the better weekly and small city newspapers as related to news content, editorials, advertising, circulation, costs. Part of the work will be in the form of research and observation in a newspaper plant of the type considered in the course. Three hours; spring.

## SPEECH

A minor is offered in the division of speech. Requirements: Twenty-seven credits, including Speech 1-2-3, 61-62, and nine credits in the upper division.

The speech laboratory is equipped with a Universal Professional Recording machine upon which each student is required to make a record of his voice at regular intervals. Radio Speech students have access to microphones and broadcasting equipment in the specially constructed studio.

1-2-3. *Essentials of Speech*. A course in the fundamentals of speech with emphasis on the acquirement of ease before an audience, a conversational attitude, and reasonable facility in pronunciation, articulation, and voice production. Instruction in the use of a public address system is included. Open to freshmen. Two credits; autumn, winter, spring; Sec. A, T. Th., 8:55; Sec. B, T. Th., 10:30.

51. *Parliamentary Procedure*. The theory and practice of parliamentary law, with much participation by all class members. Two credits; autumn; T. Th., 8:00.

52-53. *The Short Speech*. Study and practice of the short speech for various occasions, under the stimulus of model organizations. Prerequisite: Speech 51. Two credits; winter, spring; T. Th., 8:55.

\*61-62. *The Speaking Voice*. A study of the voice mechanism and correction of defects in voice production, articulation, accent, and bodily coordination. Two credits; autumn, winter.

\*63. *Oral Reading*. A course in reading from the page with fluency and effectiveness; reading from the Bible; choral speaking. Two credits; spring.

\*105. *American Oratory*. A study of masterpieces of oratory. Three credits; autumn.

\*106. *Oral Interpretation*. Practice in memoriter reading and choral speaking. Prerequisite: four credits in Speech. Three credits; winter.

\*107. *Public Lecturing*. A course in the use of illustrative and demonstration material as well as in the presentation of the straight platform

\* Not offered in 1941-42.

speech of greater length. Prerequisite: Speech 1-2-3, 61-62. Three credits; spring.

\*111-112-113. *Persuasive Speaking*. A study of the techniques of analysis and investigation; participation in group discussion for problem solution; organization of a persuasive campaign. Prerequisite: Speech 1-2-3. Three credits; autumn, winter, spring.

151-152-153. *Radio Production*. Continued study of microphone technique, practice in announcing, and preparation and presentation of programs for broadcasting. Prerequisites: Speech 1-2-3, 61-62. Two credits; autumn, winter, spring; one class and one laboratory appointment each to be arranged. Membership limited.

## HISTORY

*Mr. Christian, Mr. Lindsjo*

The minimum history requirement for a baccalaureate degree may be met by completing one of the following courses:

History of European Civilization (1, 2, 3) .....	9 credits
History of the United States (51, 52, 53) .....	9 credits

### Requirements for a *major in history* include:

History of European Civilization (1, 2, 3) .....	9 credits
History of the United States (51, 52, 53) .....	9 credits
Seminar in History (198, 199) .....	2 credits
Upper-division courses in European history .....	6 credits
Upper-division courses in American history .....	6 credits
Elective courses in history .....	22 credits

---

Total required for a *major in history* .....54 credits

### Requirements for a *minor in history* include:

History of European Civilization (1, 2, 3) .....	9 credits
History of the United States (51, 52, 53) .....	9 credits
Seminar in History (198, 199) .....	2 credits
Upper-division courses in history .....	9 credits

---

Total required for a *minor in history* .....29 credits

Additional regulations governing majors and minors in history are posted on the department bulletin board, and should be consulted by those concerned.

### LOWER-DIVISION COURSES IN HISTORY

1, 2, 3. *History of European Civilization*. A survey of European history and its world relationships from the Roman Empire to the present. Three credits; autumn, winter, spring; M. W. F., 11:25.

51, 52, 53. *History of the United States*. A survey of the colonial period, followed by a more detailed study of the national period. Three credits; autumn, winter, spring; M. W. F., 8:55.

---

\* Not offered in 1941-42.



## UPPER-DIVISION COURSES IN EUROPEAN HISTORY

[Prerequisite: *History of European Civilization* (1,2,3), nine credits.]

\*101, 102, 103. *History of England*. The development and expansion of the English people from the earliest times to the present. Two credits; autumn, winter, spring.

111, 112, 113. *History of the Ancient World*. The rise and decline of the ancient oriental monarchies, Greece and Rome, with special attention to their civilizations. Three credits; autumn, winter, spring; M. W. F., 11:25.

\*121, 122, 123. *History of the Middle Ages*. The European peoples and their institutions from the decline of the Roman Empire to the end of the fifteenth century. Three credits; autumn, winter, spring.

\*131, 132, 133. *The Renaissance and the Reformation*. The rise and spread of the Renaissance movement, the Protestant Reformation, and the Catholic Counter-Reformation. Two credits; autumn, winter, spring; T. Th., 8:55.

\*135, 136, 137. *The Era of the French Revolution*. The Old Regime, the French Revolution, and the Napoleonic period through the Congress of Vienna. Two credits; autumn, winter, spring.

\*141, 142, 143. *Europe Since 1815*. Political, economic, and social developments in nineteenth and twentieth century Europe, with special attention to our own times. Two credits; autumn, winter, spring.

151, 152, 153. *Current History*. A study of contemporary national and international affairs, based upon an investigation into causal factors. Current magazines, newspapers, and books are used. Two credits; autumn, winter, spring; T. Th., 11:25.

## UPPER-DIVISION COURSES IN AMERICAN HISTORY

[Prerequisite: *History of the United States* (51, 52, 53), nine credits.]

\*161, 162, 163. *The American Frontier*. The exploration, settlement, and development of the American west with consideration given to economic, social, cultural and political factors. Two credits; autumn, winter, spring.

\*171, 172, 173. *Diplomatic History of the United States*. A study of relations between the United States and other nations, outstanding controversies and their settlement, and the development of recognized foreign policies. Two credits; autumn, winter, spring.

181, 182, 183. *History of Religion in the United States*. An analysis of religious forces in the development of the United States, and their inter-relationships with social, cultural, economic and political forces. Two credits; autumn, winter, spring; T. Th., 10:30.

191, 192, 193. *History of Latin-America*. A survey of the colonial period, followed by a more detailed study of the development of the individual Latin-American nations and their world relationships. Two credits; autumn, winter, spring; T. Th., 8:55.

\* Not offered in 1941-42.

## RESTRICTED COURSES

(Open only to majors and minors in history.)

195, 196, 197. *Independent Study in History*. Open only by permission of the head of the department to advanced students with a superior background in historical study. Readings, reports, and conferences. One or two credits; autumn, winter, spring; hours to be arranged.

198, 199. *Seminar in History*. A research course in problems connected with historical materials and methods. One credit; autumn, winter; W., 1:15.

## HOME ECONOMICS

Miss Schluntz, Mrs. Zolber

A minor in Home Economics must include courses 1, 2, 3 and 71, 72-73.

For those majoring in Home Economics and preparing for graduate study in the field or for work as professional dietitians, the following courses are required in addition to the 45 credits in Home Economics: Chemistry 1-2-3, 51-52, and 73; Bacteriology 6-7, and eight credits in Physiology. Those preparing for homemaking or for secondary school teaching take the following courses: Chemistry 1-2-3, Bacteriology 6-7, and eight credits in Physiology.

1, 2. *Food Study*. Discussion of the fundamental problems of food in relation to health; study of the composition, nutritive value, and digestibility of common foods; principles of food selection and preparation. Three credits; autumn, winter; M. W., 8:55. Laboratory, M. or W., 1:15-4:00.

3. *Food Preparation and Service*. A course in menu planning and table service. Preparation and practice in serving formal and informal dinners, buffet suppers, luncheons, etc. Prerequisite: Course 1, 2. Spring; M. W., 8:55. Laboratory, M. or W.

\*41. *Applied Design*. Decorative Art involving a consideration of line, form, and color as applied to problems in block print, batik, etc. Develops standards of judgment through analysis of fine pictures, textiles, etc. Two credits; autumn; T. Th., 10:30-12:15.

\*42-43. *Costume Design*. A study of line, color, and texture as they are used in costume for different types and occasions. Problems in selecting and designing. Prerequisite: Course 41. Two credits; winter, spring; T. Th., 10:30-12:15.

71. *Elementary Clothing*. Fundamental processes of hand and machine sewing. Design and construction of garments of washable materials. Study of alterations, fitting problems and use of commercial patterns. Three credits; autumn; T. Th., 1:15-4:00.

\* Not offered in 1941-42.

72-73. *Clothing Selection and Construction*. Aims to develop good taste in dress and to give an appreciation in selection of clothing from standpoint of beauty, health, and economy. Fundamental principles of construction applied to wool and silk material. Problems in pattern designing and making of various types of sleeves, collars, plaits, and flares. Three credits; winter, spring; T. Th., 1:15-4:00.

87. *Consumer Buying*. A study of the homemakers problems in buying textiles, clothing and household materials with emphasis on the economic principles involved. Three credits; autumn; T. Th., 10:30.

88-89. *Textiles*. A study of fabrics to determine fundamental differences and to develop judgment in buying clothing and house furnishing materials. Two credits; spring; T. Th., 10:30.

103. *Interior Decoration*. Study and application of the principles governing the selection of furniture, textiles, pictures, and other furnishings for the home and their arrangement with appropriate backgrounds. Prerequisite: Course 41. Three credits; spring; M. W. F., 11:25.

126. *Household Management*. Management problems of the homemaker in regard to income, time, labor, and family relationships. Study of the selection, operation, care and arrangement of household equipment. Three credits; spring; M. W. F., 10:30.

134. *Tailoring*. Principles involved in making suits and coats for women. Open only to those who show skill in construction of garments. Prerequisite: Course 72-73. Three credits; autumn; M. W., 1:15-4:00.

135. *Advanced Clothing Construction*. This course offers advanced work in clothing construction and design. Making of dress forms, patterns, and garments. Three credits; winter; M. W., 1:15-4:00.

141-142. *Child Development*. A study of the care and development of young children, with special reference to home education. Three credits; autumn, winter; M. W. F., 10:30.

\*161-162. *Nutrition*. A scientific study of nutrition involving digestion and metabolic processes and products; selection of an optimal diet for health; recent investigations of nutritional deficiency diseases. Prerequisites: Course 1-2-3, and General Chemistry; prerequisite or parallel: Chemistry of Foods. Three credits; autumn, winter; M. W. F., 10:30.

\*163. *Experimental Cookery*. Development of experimental methods; their application of investigations in cookery and the skills involved; acquaintance with the literature in this field; preparation of the student for independent investigations in foods. Prerequisites: Course 1-2-3, and General Chemistry. Three credits; spring.

171-172. *Institutional Training*. This course offers practical work in the school cafeteria for those who are interested in doing matron work. Two credits; winter, spring; time to be arranged.

177. *Advanced Institutional Training*. This course gives advanced training in the supervision of the school cafeteria and other institutional activities. Two credits; autumn; time to be arranged.

183. *Home Economics Seminar*. Required of all majors. Studies of selected topics and reviews of current literature. Special investigations of problems. Prerequisite: at least thirty credits of Home Economics. Two credits; spring.

\* Not offered in 1941-42.



## LIBRARY SCIENCE

*Mrs. Sittner*

31-32-33. *Library Science*. Instruction in library methods, arrangement, classification, cataloging; the care and use of books and periodicals. Practice work required. Three credits; autumn, winter, spring. Hour to be arranged.

## MATHEMATICS

*Mr. Davidson*

The courses in mathematics are designed to give one the valuable training and discipline of mathematical study, and to provide a foundation for the study of the physical sciences. The requirements for a major in mathematics are 45 credits, including the courses 5, 6, 51-52-53.

1. *Advanced Algebra*. A course for those who have had but one year of algebra in the preparatory school. It reviews briefly the fundamental principles of first year algebra and continues with a further study of the quadratic equation, radicals, and fractional exponents. Four credits; autumn; M. T. W. F., 11:25.

\*4. *Solid Geometry*. The methods of plane geometry as applied to the geometry of space with many problems in practical applications. Two credits; autumn; T. Th., 11:25.

5. *Trigonometry*. A study of the six trigonometric functions and their use in the solution of the triangle. Four credits; winter; M. T. W. F., 8:55.

6. *Analytic Geometry*. The equations of the straight line and conic sections and their relation to the rectangular and polar coordinates. Four credits; spring; M. T. W. F., 8:55.

7-8-9. *Fundamental Mathematics*. A course of study arranged for those who do not have preparatory geometry, giving special attention in the third quarter to the mathematics of finance. Course 7 and 8 cannot be applied toward a mathematics major or minor. Three credits; autumn, winter, spring; M. W. F., 8:00.

11-12-13. *General Mathematics*. A course designed to meet the needs of pre-medical and pre-dental students and open only to those students. No credit will be given for this course toward a mathematics major or minor except by permission of the department head. Three credits; autumn, winter, spring; M. W. F., 10:30.

51-52-53. *Calculus*. The elements of differential and integral calculus with many problems in its application. Four credits; autumn, winter, spring; M. T. W. F., 8:00.

\*102. *Spherical Trigonometry*. Elements of trigonometry as applied to the spherical triangle and to navigation and astronomy. Two credits; winter; M. W., 11:25.

\*193. *Solid Analytic Geometry*. Typical equations of the plane, sphere, paraboloid, hyperboloid, and ellipsoid and their relation to rectangular and polar coordinates. Two credits; spring; M. W., 11:25.

\* Not offered in 1941-42.

111-112-113. *Differential Equations*. The solution of the various types of differential equations with applications to problems in physics, engineering, and geometry. Two credits; autumn, winter, spring; T. Th., 8:55.

\*116. *Advanced Calculus*. A study of power series, definite intergral, partial differentiation, multiple integrals, and other topics. Five credits; spring.

\*121-122-123. *College Algebra*. A discussion of further algebraical topics, including permutations and combinations, multinomial theorem, inequalities, convergency and divergency of Series. Two credits; autumn, winter, spring.

131-132. *Theory of Equations*. Further study of complex numbers, solutions of cubic and quartic equations, symmetric functions, determinants, resultants, and discriminants. Two credits; autumn, winter; T. Th., 10:30.

193. *Methods in Secondary Mathematics*. Covers objectives and methods in the various courses of secondary mathematics. Attention will be given especially to methods in those topics which present special difficulties in the secondary field. Open to majors and minors in mathematics. Two credits; spring.

## MODERN LANGUAGES AND LITERATURES

Miss Sorenson

No credit will be allowed toward graduation from the Liberal Arts course for less than two years of any modern language taken either in college or preparatory school.

In case a student has taken two years of German or French to meet the preparatory school requirements, a minimum of fifteen credits in the same language is necessary to meet the college requirement. If the same language is not continued in college, then it will be necessary to obtain twenty-four credits in college.

A major in any one language consists of forty credits, exclusive of an elementary course, or fifty-eight credits of two languages, with the grouping thirty-six and twenty-two credits respectively.

A minor consists of twenty-four credits, exclusive of an elementary course.

### GERMAN

1-2-3. *Elementary German*. Thorough grammatical analysis. Special emphasis is given to reading and to the acquisition of a working vocabulary for the further study of the language. The foundation of formal instruction in composition is laid in dictation and memorization. Early use of sight material. Practice in free oral and written expression. Five credits; autumn, winter, spring; M. T. W. Th. F., 10:30.

\* Not offered in 1941-42.

51, 52, 53. *German Reading*. Continued analysis of the language. Special training in written and oral expression with aural comprehension. Composition, syntax, dictation. Intensive and extensive reading of modern literature with oral and written reports for the purpose of fixing special grammatical forms and usages well in mind. Increasing use of German in the classroom. Three credits; autumn, winter, spring; M. W. F., 11:25.

53-54-55. *Composition and Conversation*. A comprehensive and thorough review of grammar. Facility in oral and written expression. Study of common idioms. Analysis of difficult points of German syntax. Two credits; autumn, winter, spring; T. Th., 11:25.

\*56. *Scientific German*. This course is designed especially for students who intend to enter a medical school, or who wish to acquire facility in reading German in the various fields of science. Three credits; spring.

\*101-102-103. *Introduction to German Literature*. A survey of the history of German literature from its beginning to the nineteenth century, supplemented by a study of some of the masterpieces of the language. Reading from lyric and epic poetry of the period of the Minnesaenger. Plays and songs of the fifteenth and sixteenth centuries. Representative works of the Romantic period will be read and compared with selections from the classical period. Three credits; autumn, winter, spring; M. W. F., 8:55.

105. *Classic Literature*. A careful study of the works of Goethe, Schiller, and Lessing, illustrating their influence upon the intellectual movements of their own and subsequent times. Critical study of Goethe's *Hermann and Dorothea*; Schiller's *Wallenstein*; Lessing's *Nathan der Weise*. Three credits; winter.

\*106. *Advanced Composition and Conversation*. A course in advanced composition, conversation, and reading. Increased oral practice. Special emphasis in linguistic fluency and accuracy in comprehension and reproduction. A comprehensive and thorough review of grammar. Continued study of idioms and special grammatical usages. Reading of more difficult German. Acquisition of an extended vocabulary. Instruction largely in German. Three credits; spring.

107. *German Romanticism*. A study of the social, philosophical, and religious influences on the literature of the period, illustrated in the works of the most representative authors. Lectures, collateral reading, and reports. Three credits; autumn; M. W. F., 8:55.

151. *Modern Germany and Its Literature*. In this course contemporary cultural developments in Germany will be discussed and examined. They will be illustrated by readings from modern German prose, lyric poetry, and dramas. Reports. Newspaper reading. Three credits; spring.

\*152. *History of the German Language*. This course is open to advanced students of any language, including English. A practical study of the development of the language. Special emphasis upon the relation of English to German for the purpose of acquiring the habit of thinking clearly and correctly, if not profoundly, concerning the relationship of cognates. Reading of Hartmann von Aue's *Der Arme Heinrich*, and selections from the *Nibelungenlied*. Three credits; winter.

\* Not offered in 1941-42.



154, 155, 156. *German Directed Reading*. One to three credits each quarter are offered to advanced students. The work consists of assigned readings in the library and written reports; autumn, winter, spring.

### FRENCH

1-2-3. *Elementary French*. Grammar, composition, and reading. Pronunciation is taught phonetically. Students with high school credits will be admitted upon the basis of one high school semester counting as the equivalent of one college quarter. Five credits; autumn, winter, spring; M. T. W. Th. F., 10:30.

51-52-53. *French Reading*. Selected readings from standard French authors. A course designed for intermediate students who desire a good reading knowledge. May be combined with 54-55-56 to make a five-hour course. Prerequisite to any advanced course in literature. Three credits; autumn, winter, spring; M. W. F., 11:25.

54-55-56. *French Composition and Conversation*. Grammar and composition drills and idioms. May be combined with 51-52-53 to make a five-hour course. Prerequisite to the course in Advanced Composition, and required by majors. Two credits; autumn, winter, spring; T. Th., 11:25.

\*58. *Scientific French*. A course projected for scientific students who wish to acquire a practical reading knowledge of technical French. Material selected from the various sciences will be read. Three credits; winter.

\*101-102-103. *Introduction to French Literature*. A survey of the history of French literature. Lectures, reports, outside reading. The main currents in the development of the various branches of French literature up to the beginning of the nineteenth century, with a study of representative authors. Three credits; autumn, winter, spring; M. W. F., 8:00.

104. *French Literature of the Nineteenth Century*. Course 101-102-103 continued. A study of French romanticism with special attention to Hugo, Musset, Lamartine, and DeVigny. Lectures and discussions on the precursors of the movement. Three credits; autumn; M. W. F., 8:00.

105. *French Literature of the Seventeenth Century*. A study of the best works of the classic period. Special consideration of the social, philosophic, and religious influences on the literature, illustrated in the works of the most representative authors. Lectures, collateral reading, and reports. Three credits; winter.

\*106. *Advanced Composition and Conversation*. Emphasis on linguistic accuracy both in comprehension and reproduction. Training in formal and informal written and oral expression, aural comprehension, and the accurate determination of the value of the printed word. Continued study of idioms. Study and practice in peculiarities of style and other difficulties of the written and spoken language. Exercises in extended verb formation. Three credits; spring.

153. *French Pronunciation*. An analysis of the difficulties of French pronunciation. Abundance of individual drill and practical directions for remedial exercises. Three credits; spring.

\* Not offered in 1941-42.

154, 155, 156. *French Directed Reading*. One to three credits each quarter are offered to advanced students. The work consists of assigned readings in the library and written reports. Autumn, winter, spring.

## MUSIC

Mr. Johnson, Mr. Walker, Mr. Gernet, Mr. Hamilton

*Prerequisites*: Sight-singing I, Directing I, Fundamentals, Advanced Standing in Applied Music.

(Prerequisites may be waved only by recommendation of the music faculty.)

1-2. *Fundamentals of Music*. A class especially designed for ministerial and normal training students, dealing in the study of elementary techniques of sight-singing, voice-production, directing, chord and scale-structure, meaning of significant musical terms; study of hymns and tunes; biographical sketches of eminent composers, etc. Three credits; spring; M. W. Th., 2:10.

4-5-6. *Melodic, Rhythmic, and Harmonic Dictation*. Sight-singing prerequisite. A course aimed at the development of power to recognize through the aural sense, music of moderate complexity as to melodic, rhythmic, and harmonic content. One credit; two hours a week; autumn, winter, spring.

7-8-9. *Harmony I*. A course in chord structure and chord relationship from the melodic and rhythmic basis; harmonization of set and original melodies introducing non-chordal tones in the tonic and dominant harmonies; analysis; simple modulation. Composition of two original works is required for course. Two credits; autumn, winter, spring; M. W., 1:15.

11-12-13. *Directing I*. Study of the technique of directing congregational singing. Special emphasis given to rhythmic problems. Prerequisite: Sight singing or its equivalent. One-half credit; autumn, winter, spring; M., 2:10.

14, 15, 16. *Elementary Class for Stringed Instruments*. One credit; two hours a week; autumn, winter, spring.

17, 18, 19. *Elementary Class for Woodwind and Brass Instruments*. One credit; two hours a week; autumn, winter, spring.

24, 25, 26. *Instrumental Ensembles*. Trios, quartets, sextets. Various combinations of woodwind and brass instruments. One credit; autumn, winter, spring; M. F., 3:05.

51, 52, 53. *Survey of Music Literature*. An appreciation and orientation course in the classics of music literature designed to acquaint the student with works of standard merit and to develop in him the ability to listen with appreciation, enjoyment, and discrimination. One credit two hours a week; autumn, winter, spring; time to be arranged.

54, 55, 56. *Sight-Singing*. A practical course developing the ability to sing fluently at sight material of the difficulty of the average art-song or chorus. One credit; autumn, winter, spring; T. Th., 10:30.

61-62-63. *Harmony II*. Chromatic harmony; modulation to distant keys; harmonization of original melodies; analysis; application of harmonic techniques to the keyboard. Composition of two original works is required for course. Two credits; autumn, winter, spring; T. Th., 1:15.

64-65-66. *Directing II*. Prerequisite: Directing I. Orchestra and Band directing using members of the class in organization. Text: Orchestra and Band Conducting, by Peterson. One credit; autumn, winter, spring; W., 2:10.

67, 68, 69. *Hymn and Accompanying Class*. A study of chords and the required technique for their execution in hymn playing. A practical study will also be made for simple accompaniments. One credit; autumn, winter, spring.

71. *Advanced Sight-Singing*. An intensive course in advanced sight-singing designed for majors in music. One credit; autumn; M. W., 2:10.

72, 73. *Music Teaching (Piano)*. This class is designed for those who plan to teach, and will include a detailed study of repertoire, keyboard technique, pedal technique, memorizing, rhythm, and reading from the earliest to the advanced grades. One credit; winter.

75, 76. *Music Teaching (Voice)*. This class is designed for those who plan to teach voice, and consists of a detailed study of repertoire, correct breathing, voice placement, memorizing, rhythm, and reading from the earliest to the advanced grades. One credit; winter. Two credits; spring.

78, 79. *Music Teaching (Violin)*. This class is designed for those who plan to teach violin, and will include a detailed study of repertoire, technique, memorizing, rhythm, and reading from the earliest to the advanced grades. One credit; winter. Two credits; spring.

81, 82, 83. *Vocal Ensembles*. Duets, trios, quartets, sextets. One credit; autumn, winter, spring.

91, 92, 93. *Chamber Music*. String quartets; violin, 'cello, and piano trios, etc. Upper division students may receive upper division credit. One credit; autumn, winter, spring.

111-112-113. *History of Music*. This course covers the development of music from its beginning through the Ancient, Medieval, Renaissance, Classical, Romantic, and Modern periods. Research and term reports. Two credits; autumn, winter, spring; time to be arranged.

114-115. *Form and Analysis*. A study of the design and harmonic structure of simple and complex forms of music composition; standard classic works analyzed. Two credits; autumn, winter.

116. *Keyboard Harmony*. This course, supplementing the theoretical ones, includes the playing of chord progressions, sequences, modulation, and harmonization of smaller forms. Two credits; spring.

121-122-123. *Counterpoint*. Principles of two, three, and four part strict counterpoint, invention, fugue, canon, and contrapuntal harmonization. Analysis of the Well-Tempered Clavichord. Two credits; autumn, winter, spring; M. W., 3:05.

131-132-133. *Composition*. Study of the art of melodic invention; original composition in small forms principally of homophonic design. Harmony I and II prerequisite courses. Two credits; autumn, winter, spring.

135. *Music in the Elementary School*. Main objectives for teaching music in grades. Organization of course, teaching of rote songs, part singing, appreciation of music, care of children's voices. Three credits; autumn; time to be arranged.

141-142-143. *Orchestration*. Practical work arranging for band and orchestra with special attention to the problems of transposition, substitution, combinations, and the peculiar possibilities and limitations of the various instruments. Two credits; autumn, winter, spring.



## ENSEMBLE

All music students are invited to take part in some one or more of the various ensemble activities, orchestra, glee clubs, or chorus. One-half credit a quarter is allowed.

## ORCHESTRA AND BAND

The orchestra and band afford excellent experience in ensemble playing. Each organization holds two rehearsals weekly, each practice being one hour in length. Each organization also appears through the school year for student body occasions.

## CHORAL ORGANIZATIONS

Glee clubs will be organized for those who are able to sing true pitch and to carry a part. Ability to read music is valuable as a prerequisite.

## A CAPPELLA CHOIR

Members are selected by the vocal instructor. Those entering must agree to comply with the regulations of the organization.

## PIANOFORTE

Those beginning the four-year piano course are expected to have completed the work outlined in the Academic Piano Syllabus adopted by the North Pacific Union Conference Board of Education, or the equivalent. A syllabus may be procured from the North Pacific Union Conference, 202 S. Palouse St., Walla Walla, Washington.

This course will include exercises for the development of an adequate technique, with special attention to the individual needs. Single and double-tone technique will be given, with emphasis on tone production, dynamic range, and facility.

A junior and senior recital are required of all candidates for graduation. In both cases a full program of well-balanced selections must be presented.

The following is an example of what the total repertoire accumulated during the four years should include:

CLASSIC	ROMANTIC	MODERN
<i>Bach</i>	<i>Chopin</i>	<i>Debussy</i>
2 Two-part inventions	4 Etudes	Two preludes
1 Partita or suite	1 Nocturne	<i>Poulenc</i>
2 Preludes and fugues	6 Preludes	Suite or Mouvements
1 Organ transcription	2 Waltzes	Perpetuels
	1 Mazurka	
	1 Ballad, scherzo, or polonaise	<i>Toch</i>
<i>Handel</i>	<i>Schumann</i>	<i>The Juggler</i>
Harmonious Blacksmith	Papillon or romance and novelette	<i>MacDowell</i>
	<i>Schubert</i>	Concert Etude in F sharp
<i>Haydn</i>	<i>Mendelssohn</i>	
1 Sonata	Prelude and fugue	<i>Ravel</i>
	Rondo Capriccioso or Song Without Words	Jeux d'Eau
<i>Mozart</i>	<i>Brahms</i>	A COMPLETE concerto from the classic, romantic, or modern school
Rondo, fantasia, or sonata	Rhapsody	
	<i>Liszt</i>	
<i>Beethoven</i>	Etude, rhapsody or sonetto	
1 Sonata		

#### PIPE ORGAN

The foundation teaching in this department is based on trios and pedal studies, and Bach. Much attention is given to clarity and precision, voice progression, various types of legato and staccato, choice of registration, artistic phrasing, and ease in the handling of the modern organ.

The student's thorough technical grounding, together with the very best in organ literature prepares him for church work with its attendant recitals.

#### VIOLIN

The main objects sought after in this department are: technical and artistic development, a discriminating ear, a reliable musical memory, a well-balanced repertoire, and intelligent cooperation and advancement in all forms of orchestral and ensemble work offered. A public recital from memory is required of all majors in music, and a student recital may be listed at the discretion of the head of the department.

The study of the instrument necessitates a graded course of standard work, and this outline the student is expected to follow.

Emphasis is placed upon good intonation, correct bowing, and a full round tone. The method of instruction used is based upon the teachings of Maia Bang, Laoureux, Sevcik, and other recognized authorities.

During the four year course the student will have completed etudes by Kayser, Dont, Fiqrillo, Kreutzer, and Rode. Pieces and concertos include standard works by Seitz, De Beriot, Viotti, Mendelssohn, Wieniawska, Kreisler, and others.

#### VOICE

In this department a normal, natural development of the given powers of each student is undertaken, in place of set methods which frequently do not apply to a particular case. In other words, students are taught singing, not methods, and by singing is meant the all-convincing ease and beauty implied by the term *bel canto*. Correct diction in English, French, German, and Italian is insisted upon.

Development of personality, ease of manner, poise, and an engaging platform presence for public performance is stressed. Those who are especially interested in evangelistic singing will be fully prepared for this type of work.

*Prerequisites:* Possession of a fairly good voice, ability to read and sing a simple song at sight and on pitch, a knowledge of the piano keyboard, ability to sing a folk song, a patriotic song or a hymn from memory to demonstrate voice, instinctive interpretive ability and sense of rhythm.

The requirements for a music major in voice are:

*Freshman Year:* Classification of the voice, vocalizations for tone production, and simple old English classics and modern songs to assist tone production through articulation and diction. Glenn's *Art Songs for School and Studio*, Volumes I and II, are used from which four songs are chosen, in addition to fourteen English Classics and two easy oratorio arias.

*Sophomore Year:* Continuation of technical studies for development of the necessary qualities of the individual voice. Four additional songs from a selected list; three songs selected from "Bergerettes" by Weckerlin. Three Italian songs from Volume I of Italian Anthology; two French songs from a list by Faure, Massenet, Debussy, Widor, Vidal, Lala, and Hahn; two recitatives and arias in English from "St. Paul," "Messiah," "The Creation," and "Elijah."

*Junior Year:* Seven additional German songs from a list by Brahms, Wolff, Tschaikowsky, Strauss, and Beethoven; five songs in English from a list by Rachmaninoff, Gretchaninov, Chadwick, Parker, Shaw, Coleridge,



Taylor, or equally representative composers; two Italian songs from a list by Donaudy, Sibella, Wolf-Ferrari; four additional French songs from a list by Debussy, Baton, Fourdrain.

*Senior Year:* Continuation of language study is required. Three additional French songs from a list by Ravel, Lully, Debussy, Massenet, etc.; three additional German songs from a list by Schubert, Schumann, Strauss, and Brahms; three additional Italian songs from a list by Arditi, Brogi, Leoncavallo, Giannini, Sadere; three additional English songs from a list by Hageman, Weaver, Carpenter, Campbell-Tipton, etc.; two additional arias in English, Italian, or German, suited to the individual voice. Preparation of program or programs for graduation recital, selected from the repertoire acquired in the previous grades; public recital; appearance with orchestra upon recommendation of the music faculty.

Voice students and all members of the a cappella choir and of the glee clubs are required to sing with the oratorio chorus during at least one quarter of the school year.

## PHYSICS

*Mr. Kretschmar*

Major students are required to take courses 101-102, 102A, 104, 104A, 105-106, 105A, 107-108, 108A, 109, 109A, 151-153, and courses 1, 5, 6, and 51-53 in mathematics.

51, 52, 53. *General Physics.* An introductory course in general physics, mechanics, and the properties of matter, electricity, light, and modern physics. Demonstrations, lectures, problems, and textbook work. Basic mathematical principles are emphasized. Three credits; autumn, winter, spring; M. W. F., 8:55.

51A-52A-53A. *Experimental Physics.* A laboratory course to accompany General Physics. Consists of quantitative experiments, following the general outline of *Laboratory Physics* by Taylor, Watson, and Howe. One credit; autumn, winter, spring; Sec. A, Sun., 8:30-12:00; Sec. B, Tues., 1:15-4:45.

83. *Surveying.* A course in plane surveying which will include the use and care of instruments, methods of leveling, and land surveying, determination of the meridian and latitude and some work in mapping. About one-half the time will be spent in practical field work. Four credits; spring; T. Th., 10:15. Field work, Sunday, 1:00-4:00, Tuesday, 1:15-4:15.

91, 92, 93. *Machine Shop Practice.* A course in practical machine shop practice which will include textbook work and assigned projects in metal working on the lathe, shaper, and milling machine. Some projects in forging and welding will be done in connection with the course, with the intent of providing a general experience in repairing and manufacturing processes. Two or three credits; autumn, winter, spring; Sec. A, M. W., 1:15-5:30; Sec. B, T. Th., 1:15-5:30.

\*101-102. *Electricity and Magnetism*. A course in general principles and theory of electricity and its applications, with special reference to the needs of advanced physics students. Prerequisites: Math. 51, Physics 1-2, 1A-2A-3A. Three credits; autumn, winter; M. W., 11:25.

\*101A. *Electrical Measurements*. A laboratory course to accompany course 101-102. Two credits; autumn.

104. *Heat*. A course in the principles of temperature and heat measurement, Kinetic theory, change of state, and thermodynamics. Two credits; autumn; T. Th., 10:30.

104A. *Heat Laboratory*. A laboratory course to accompany Course 105. Two credits; autumn.

105, 106. *Physical Optics*. An introduction to the study of light and optical phenomena. Reflection, refraction, dispersion, and interference are taken up. Polarization and spectra are studied. The electro-magnetic theory is studied in some detail and the quantum theory of radiation is considered briefly. Two credits; winter, spring.

105A. *Optics Laboratory*. A laboratory course to accompany Course 105. Two credits; winter.

\*107-108. *Atomic Physics*. A course designed to acquaint the student with present-day developments in the rapidly expanding field of modern physics. Atomic structure is studied in detail from the viewpoint of radioactive and X-ray considerations. Atomic models, the Bohr theory, and the contributions of spectroscopy are studied. Three credits; autumn, winter.

\*108A. *Atomic Physics Laboratory*. A laboratory course in which some of the classical experiments are performed. Designed particularly to give the student a little background in modern physics. Will cover experiments similar to the outline in *Electron Physics*, by Hoag. Prerequisite: Physics 101-102 and 101A. Two credits; winter.

\*109. *Electronics*. The principles and applications of electronic devices, such as triode vacuum tubes and photo-electric cells will be taken up in detail. Physics 101-102, and 101A or their equivalent is prerequisite. Three credits; spring.

109A. *Electronics Laboratory*. A laboratory course designed to accompany Course 109. Radio frequency measurements and experimental work with oscillators, rectifiers, amplifiers, and electronic devices. Two credits; spring.

111, 112, 113. *Practice Teaching in Physics*. The student takes charge of one laboratory section in General Physics. Student should obtain instructor's approval before registering. One credit; autumn, winter, spring.

151-152-153. *Mechanics*. An elemental mathematical course covering the general principles of force, motion, statics of particles and rigid bodies, work and energy, equations of motion, central forces, motion of particles and rigid bodies. In the latter part of the course, generalized coordinates and the Lagrangian equations will be considered briefly. Two credits; autumn, winter, spring; M. W., 11:25.

---

\* Not offered in 1941-42.

## PHYSICAL EDUCATION

Mr. Brinker

The aim of the Physical Education department is to develop the physical well being of the individual by providing activities which stimulate the habit of regular exercise, develop a reasonable skill and interest in activities which may be enjoyed after graduation; thereby equipping the individual with the methods of keeping his body physically fit throughout life.

All students using the gymnasium must wear gymnasium shoes and suits. Suits purchaseable at the time the student enters the class.

Because of the amount of supervision necessary for conducting the work of this department, a double charge is made for all credit in physical education.

1, 2, 3. *Physical Education I. Men.* Required in freshman year. Group games, individual contests, emphasis on the mind-body coordination, and development of the general physique. One-half credit; autumn, winter, spring; M. W., 2:10.

5, 6, 7. *Physical Education I. Women.* Required in freshman year. The course includes setting up and corrective exercises, marching, games. One-half credit; autumn, winter, spring; T. Th., 2:10.

7A. *Beginners Swimming.* One-half credit; spring; T. Th., 2:10.

14, 15, 16. *Junior Leadership.* A study will be made of and practice will be given the techniques involved in the Junior Progressive Class Work; laboratory work with the Juniors in the form of camp cookery, handcraft, hiking, nature study, etc. One-half credit; autumn, winter, spring.

21-22-23. *Medical Cadet Corps: Basic and Technical Training.* While accorded non-combatant status, Seventh-day Adventists believe in serving their country in any capacity which does not include the active bearing of arms. This course is intended to prepare young men to render acceptable service to their country along non-combatant lines. Principles of first aid; instruction in the care of the wounded; personal and camp hygiene; close order, physical, and litter drill. One and one-half credits; autumn, winter, spring; one hour class attendance, three hours laboratory; classes T., 8:00, and Th., 8:55; lab., M. Th., 1:00. (Note: This course satisfies the physical education requirement for graduation.)

31. *Standard American Red Cross First Aid.* One credit; winter; time to be arranged.

32. *Advanced American Red Cross First Aid.* One-half credit; winter; time to be arranged.

51, 52, 53. *Physical Education II. Men.* Required in sophomore year. Continuation of Physical Education I. Advanced exercises, use of apparatus, knowledge of and average playing ability of the several athletic games. Prerequisite; Physical Education I or Medical Cadet Corps 21-22-23. One-half credit; autumn, winter, spring; M. W., 4:00.



55, 56, 57. *Physical Education II. Women.* Continuation of Physical Education I. Advanced exercises, tumbling, average skill in at least two athletic games. Prerequisite; Physical Education 5, 6, 7. One-half credit; autumn, winter, spring; T. Th., 4:00.

55A. *Advanced Swimming.* One-half credit; autumn; T. Th., 4:00.

57A. *Life Saving.* One-half credit; spring; T. Th., 4:00.

\*61-62-63. *Medical Cadet Corps: Technical Training in Emergency Nursing Procedures.* Training in the fundamental nursing principles necessary in ward nursing in the field hospital. Prerequisite; Medical Cadet Corps 21-22-23. One-half credit; autumn, winter, spring.

71, 72, 73. *Medical Cadet Corps: Advanced Course.* Men in this class act as the non-commissioned officers of the beginning class. Instruction in the art of leadership, commanding, and administration. Prerequisite: Medical Cadet Corps 21-22-23 and 61-62-63. Physical Education 51, 52, 53 advised; and permission of the instructor. One-half credit; autumn, winter, spring; time to be arranged.

## POLITICAL SCIENCE

Mr. Christian

1. *American National Government.* The origin and establishment of our national government; its executive, legislative, and judicial functions as outlined in the constitution and as developed to the present; extra-constitutional agencies and activities. Three credits; autumn; M. W. F., 10:30.

\*2. *American State and Local Government.* The inter-relationships of national, state, and local governments; the administrative, legislative, and judicial functions in theory and practice. Three credits; winter; M. W. F., 10:30.

\*3. *American and Municipal Government.* The development of American cities and their place in our political system, the various types of city government, and contemporary problems. Three credits; spring; M. W. F., 10:30.

\*51. *Comparative European Governments.* A study of the historical development of the major western European states, with emphasis placed on contemporary problems. Upper division credit by arrangement with instructor. Three credits; winter. Prerequisite: History 1-2-3.

\*52. *Comparative European Governments.* The governments of representative eastern European countries, with special reference to post-war Russia. Upper division credit by arrangement with instructor. Three credits; winter. Prerequisite: History 1-2-3.

---

\* Not offered in 1941-42.

# Department of Vocational Instruction

## AUTO MECHANICS

Mr. Schiller

1-2-3. *Auto Mechanics*. A practical study of the details of modern automobile engines, transmission systems, methods of control, principles of bearing design, and ignition systems. Practical experience in overhauling and repairing. One unit in academy. Three credits; autumn, winter, spring.

## PRINTING

Mr. Collins

A limited number of students are offered the opportunity of studying the art of printing in the College printing office. The department is well equipped with modern machinery, linotypes, cylinder, automatic cylinder, and platen presses. This catalog is a product of the department, and the *North Pacific Union Gleaner*, *The Mountain Ash*, and *The Collegian* are printed here, besides a large amount of first class commercial work, which gives the student training in the various lines of the printing industry.

In the department opportunity is given (to the student who has shown his interest in printing, taken at least two years and has acquired enough skill in the trade) at the discretion of the one in charge, to put in an amount of time equal to his full industrial and domestic work or more, for which excess time he will receive remuneration according to the value of his labor.

Printing 1-2-3 and 51-52-53 are required of students minoring in journalism.

1-2-3. *Printing I*. General principles; measurements, straight and display composition. The imposition and locking of forms, and platen press work. Two credits; autumn, winter, spring.

51-52-53. *Printing II*. Further study of job composition, drafting, platen and cylinder press work. Imposition of forms is given. Five hours of actual shop practice and one hour of textbook study is required. The student is expected to develop speed, accuracy, and independent thinking in shop practice to the point of acceptable commercial efficiency. He may specialize in composition or in press work. Two credits; autumn, winter, spring.

101-102-103. *Printing III*. Linotype composition. Keyboard practice, machine construction; care of matrix; care of metal; study of fundamental principles of operation. Two credits; autumn, winter, spring.

## WOODWORK AND CARPENTRY

Mr. Emerson

1-2-3. *Technical Drawing*. Descriptive geometry, lettering, problems, working drawings, pictorial drawing. The student is allowed to specialize in house planning, furniture design, or machine drawing. Emphasis is placed on the technique of making both pencil and ink tracings for blue-printing. Two credits; autumn, winter, spring; T. Th., 1:15-4:15.

5-6-7. *Cabinet Making*. Special stress is laid on good construction, good design, and exactness in all work. Care and use of tools, sharpening tools, period designs in furniture, original designs, glue and its uses, finishing, use and operation of machinery. End tables, cedar chests, flower stands, cabinets, desks, etc., may be made during the year. Three credits; autumn, winter, spring; recitation T., 2:10; shop open except Sunday and Friday afternoons.

7-8-9. *Wood Turning*. Spindle, face plate, and chuck turning. Exercises, assigned projects, and original designs. Wood finishing, metal spinning. Two credits; autumn, winter, spring; shop open except Sunday and Friday afternoons.

\*10-11-12. *Painting*. Stains, fillers, paints, enamels, varnishes, with their application and use. Selection and care of brushes and equipment. Particular study of color combinations and pleasing tone. Two credits; autumn, winter, spring.

51-52-53. *Carpentry I*. This class works on a house or other building during the school year. Each student is given the opportunity to become familiar with the details of house construction through actual practice. Text-book and lecture work precedes each of the building operations that the student may attack the work intelligently. During the coldest part of the winter, the class makes intensive study of house plans; wide reading and original drawing are required. Typical plans are critically examined to discover what features are desirable and what might be improved. Three credits; autumn, winter, spring; M. W., 1:15-5:15.

101-102-103. *Advanced Technical Drawing*. Completed drawings, working drawings, presentation sketches, freehand sketching, house planning. Opportunity to specialize in the line of the student's interest is given in the projects of this course. Prerequisite: course 1-2-3. Two credits; autumn, winter, spring; time to be arranged.

105-106-107. *Carpentry II*. Contracts, plans, specifications, estimating, design of buildings, foremanship. Reinforced concrete design and forms, mill construction, structural timber, trusses. Building materials and equipment. Three credits; autumn, winter, spring. Prerequisite: course 13-14-15.

\*109. *Design*. Spot and line composition. Period styles of furniture. Original designs aimed at combining usefulness and structural excellence with beauty and grace of form. Prerequisite: course 1-2-3. Two credits; spring.

---

\* Not offered in 1941-42.





LAUNDRY



GARAGE



STORE



## GENERAL AGRICULTURE

*Mr. Losey*

*General Agriculture.* A survey course covering in a general way the various phases of plant production and animal husbandry. Special attention will be given to gardening, dairying, and poultry husbandry. Autumn, Dairying; winter, Poultry Husbandry; spring Gardening. One hour class work and two hours laboratory. Two credits; autumn, winter, spring.

## BAKING

*Mr. Gibbon*

*1-2-3. Baking.* A practical course in baking, covering care of shop utensils, operating of machinery, firing of oven, mixing of breads, buns, rolls, etc., and the making of pastries. Three credits; autumn, winter, spring.

*51-52-53. Baking.* A continuation of the above vocational instruction with sales practice. Three credits; autumn, winter, spring.



## PART IX

# The School of Theology

### *Organization*

The School of Theology is incorporated under the administration of the College, and the members of the School are subject to all the general regulations of the College. The academic year, periods of examination, etc., run concurrently with those of the College, and all its facilities for study and manual work are at the disposal of the School.

### *Admission*

The purpose of theological training requires that a careful selection of candidates for admittance be made not only on the basis of scholastic accomplishments, but also on the basis of spiritual qualities, social sympathies, and cultural refinement.

Application for admittance must be made to the Dean.

The minimum requirements for college entrance must be completed before admission and a certificate or transcript of record from an accredited institution must be submitted.

### *Courses of Study*

The curriculum of the School of Theology provides for two somewhat different courses of study: one a full college course which leads to the degree of Bachelor of Theology; the other a course for Bible workers, which may be supplemented by arrangement, if desired, to lead to Bachelor of Arts or Bachelor of Theology.

At the discretion of the Dean competent students may supplement their theological schedules with work from the College. For students who so desire, certain supplementary courses in education may be worked into the present schedule as electives, for teaching certification.

## Outline of Bachelor of Theology Course

## FIRST YEAR

*Autumn Quarter Credits*

Bible Survey or Life and Teachings of Jesus	2
Greek I	4
English	3
History	3
Biology	4
Physical Education	½

*Winter Quarter Credits*

Bible Survey or Life and Teachings of Jesus	2
Greek I	4
English	3
History	3
Health Principles	3
Physical Education	½

*Spring Quarter Credits*

Bible Survey or Life and Teachings of Jesus	2
Greek I	4
English	3
History	3
Biology	4
Physical Education	½

## SECOND YEAR

Fundamentals of Christian Belief	2
Education	3
Greek II	4
Speech	2
Journalism	2
Denominational History	2
Music	1
Physical Education	½

Fundamentals of Christian Belief	2
Education	3
Greek II	4
Speech	2
Journalism	2
Denominational History	2
Music	1
Physical Education	½

Fundamentals of Christian Belief	2
Education	3
Greek II	4
Speech	2
Journalism	2
Denominational History	2
Music	1
Physical Education	½

## THIRD YEAR

Daniel and Revelation	3
Church Polity	2
Field Seminar I	1
*Epistles or Prophets	3
Church History	3
Electives	4

Daniel and Revelation	3
Homiletics I	2
Field Seminar I	1
*Epistles or Prophets	3
Church History	3
Electives	4

Daniel and Revelation	3
Homiletics I	2
Field Seminar I	1
*Epistles or Prophets	3
Church History	3
Electives	4

## FOURTH YEAR

Systematic Theology	3
Homiletics II	3
Field Seminar II	1
*Prophets or Epistles	3
†History	2-3
Electives	4-5

Systematic Theology	3
Homiletics II	3
Field Seminar II	1
*Prophets or Epistles	3
†History	2-3
Electives	4-5

Systematic Theology	3
Homiletics II	3
Field Seminar II	1
*Prophets or Epistles	3
†History	2-3
Electives	4-5

## ELECTIVES

\* Courses marked with a star alternate and are offered every other year. Upper division students are advised to fill their schedules to meet requirements with this in mind.

† As upper division history is recommended Ancient History, Europe Since 1815, Renaissance and Reformation.

As electives for theological students the following courses from the School of Theology curriculum are recommended: Greek III, Hebrew I and II, Archaeology and the Bible, Ancestry of the Bible, World Religions.

In education, to fulfill requirements, a sequence such as General Psychology, Educational Psychology, Principles of Education is suggested. Those who wish to add other courses in education, with a view to teacher certification, are referred to requirements for this printed elsewhere in this catalog. Under the direction of the Dean of the School of Theology and the Head of the Department of Education, they should work out a proper sequence of courses in education and methods, to fill out the electives for their junior and senior years.

In music, in addition to instrumental and vocal training, the courses Fundamentals of Music and Directing are recommended.

*Outline of Course for Bible Workers*

This course is arranged for young women planning to do Bible work as a life calling. On its completion a diploma is awarded. The course of study is so arranged that a fourth year of study may lead to the degree of Bachelor of Arts, by completing one of the majors required for this degree.

## FIRST YEAR

<i>Autumn Quarter</i>	<i>Credits</i>	<i>Winter Quarter</i>	<i>Credits</i>	<i>Spring Quarter</i>	<i>Credits</i>
Life and Teaching of		Life and Teaching of		Life and Teaching of	
Jesus.	2	Jesus	2	Jesus	2
English	3	English	3	English	3
History	3	History	3	History	3
Home Economics	3	Home Economics	3	Home Economics	3
Modern or Ancient		Modern or Ancient		Modern or Ancient	
Language	5	Language	5	Language	5
Physical Education	½	Physical Education	½	Physical Education	½

## SECOND YEAR

Fundamentals of		Fundamentals of		Fundamentals of	
Christian Belief	2	Christian Belief	2	Christian Belief	2
Education	3	Education	3	Education	3
Speech	2	Speech	2	Speech	2
Biology	4	Biology	3	Biology	3
Physical Education	½	Physical Education	½	Physical Education	½
*Electives	5	*Electives	5	*Electives	5

## THIRD YEAR

Homiletics I	2	Homiletics I	2	Homiletics I	2
Church History	3	Church History	3	Church History	3
Field Seminar I	1	Field Seminar I	1	Field Seminar I	1
Hebrew Prophets	3	Hebrew Prophets	3	Hebrew Prophets	3
*Electives	7	*Electives	7	*Electives	7

\* One of these electives to be music. The others may be selected from Home Economics or Language.



## PART X

# The Summer Session

The summer session, is a regular quarter of the school term. It is especially adapted to the needs of (1) students who desire to shorten the time usually required to complete a college course, (2) students who have found it necessary to take a partial load during the regular school year, but who desire to complete a college course in the usual length of time, (3) students who have been forced by circumstances to miss a quarter of the regular school year, and (4) teachers who desire to take additional courses of professional or general interest.

The summer session is divided into two terms. While most students will attend the entire session, the two-term plan makes it possible to complete in approximately five weeks regular courses yielding a limited amount of college credit. Students completing requirements for graduation during the summer will receive their degrees or diplomas at the end of the summer session.

Because of the smaller enrollment, it is possible to give personal attention, instruction, and supervision to a greater extent during the summer session.

Further details regarding the session may be obtained in the annual summer session bulletin.

### *College Enrollment of 1940-1941*

Post Graduate Students	9
Students in College Department	652
Special Students	2
	<hr/>
TOTAL	663
Summer School 1940	120
	<hr/>
GRAND TOTAL	783

## PART XI

### Graduates of 1940

#### *Bachelor of Theology*

Ruth Marie Coopridner  
John Frederick Hamel  
Keith Clare Holman  
Harold Earl Huey  
Stanley W. Johnson  
Raymond S. Michel  
Forrest G. Roper  
H. Eugene Sample  
Ivan Schaber

#### *Bachelor of Arts*

Geneva Ruth Ackerman—English  
Henry Theodore Bergh—Business Administration  
Vernon L. Braaten—English  
John de Romanett—History  
Ronald D. Drayson—Biblical Languages  
Willie Woodrow Eden—Business Administration  
Samuel H. Fritz—History  
Lucille Evelyn Gleyre—Secretarial Science  
Harry D. Johnson—Business Administration  
Henry T. Larsen—History  
Esther Irene Logan—English  
Hartley Benner Ludden—Business Administration  
Wilma Dolores Manfull—History  
Katherine Ruth Martin—English  
Willard Meier—History  
Arvella Marguerite Mentzel—History  
Janet Jerraine Miller—Music  
James A. Ogren—History & English  
Caleb W. Prall—History  
Wilbur W. Rennings—History  
Calvin Russell—History  
Hilda Keszler Schwartz—Business Administration  
Wesley J. Siegenthaler—Business Administration  
Clyde Wesley Smith—Business Administration  
Francis A. Soper—History  
Edith Berniece Swigart—English  
Eleanor Dorothea Wentworth—Business Administration

Gladys Cieller Wilson—Mathematics

#### *Bachelor of Science*

Bertha Bernita Bliss—Physiological Science  
Maudie Bryan—Physiological Science  
Carey Eastwood—Chemistry  
Albert LeRoy Frank—Mathematics  
Ellsworth E. Klahr  
Arthur C. Miller  
Ervin Edson Nichols  
Miriam Edith Ottman  
Elbert Colegrove Palmer—Physics  
Ellen Rasmussen—Physiological Science

#### *Bachelor of Science in Home Economics*

Bertha Shollenburg  
Alice Esther Soper  
Evelyn Degering-Vulliet  
*Three-Year Normal Course*  
Paul E. Featherston  
M. Stephanie Harris  
Genevieve Herwick  
Helen Evelyn Johnson  
Robert Lawrence Johnson  
*Two-Year Normal Course*  
Mabelle Eunice Banks  
Albert D. Butherus  
Olive Munsey-Featherston  
*Three-Year Premedical*  
Cleon K. Hubbard  
Lance W. Judkins  
Carl V. Lansing  
John Davison Pearson  
C. Chester Schmidt  
Merritt Wm. Smith  
Charles Erwin Syphers  
*Two-Year Premedical*  
James D. Lansing  
*Secretarial*  
Eileen Abegg  
Ellen Ogren  
Leona Pearl Warren  
*Pre-Dietetics*  
Muriel Bafus  
Harryette Van Ausdle

## PART XII

# Time Schedule of Classes

AUTUMN QUARTER, 1941

### BIBLE

Course	Instructor	Hour	Days	Room
Bible Survey				
Sec. A	Lindsjo	8:00	TTh	34
Life and Teachings of Jesus				
Sec. A	Hendershot	8:00	TTh	13
Sec. B	Robison	8:00	TTh	33
Sec. C	Robison	8:55	TTh	33
Sec. D	Hendershot	1:15	TTh	13
Sec. E	Robison	10:30	TTh	36
Fundamentals of Christian Belief				
Sec. A	Burg	8:00	TTh	36
Sec. B	Burg	1:15	TTh	36
Daniel and Revelation	Robison	1:15	MWF	34
Doctrines I				
Sec. A	Hendershot	8:55	TTh	13
Sec. B	Hendershot	10:30	TTh	13
Systematic Theology	Becraft	11:25	MWF	36
Den. Hist. & Spirit of Proph.	Robison	8:55	MW	36
Hebrew Prophets	Burg	8:55	MWF	12
Church Polity	Robison	11:25	TTh	36
Archaeology and the Bible	Lindsjo	10:30	MWF	34
Homiletics I	Robison	11:25	TTh	36
Homiletics II	Hendershot	10:30	MWF	13
Seminar I	Robison	Arr.		
Seminar II	Hendershot	Arr.		

### ART

Lettering	Miller	8:00	TTh	20
Art	Miller	8:55	M-F	20
Art	Miller	10:30	MTWTh	20
Art	Miller	1:15-3:00	T	20
China Painting	Miller	1:15-4:00	W	20
Chalk Illustrating	Miller	1:15-3:00	T	20

### BIBLICAL LANGUAGES

Greek I	Lindsjo	8:55	MTWTh	34
Greek II	Lindsjo	8:00	MWF	34

### BIOLOGY

Zoology	Booth	8:55	MWF	S.H.
Morphology of Plants	Booth	10:30	TTh	S.H.
		1:15	M	S.H.
Biology	Booth	8:00	MWF	S.H.
Microscopical Technique	Booth	Arr.		S.H.
History of Biology	Booth	Arr.		S.H.
Anatomy and Physiology	Marsh	8:00	MWF	S.H.
Vertebrate Embryology	Booth	8:55	TTh	S.H.



## BUSINESS ADMINISTRATION

Course	Instructor	Hour	Days	Room
General Economics	Cubley	10: 30	MWF	30
Business Behavior and Ethics	Walker	10: 30	T	30A
Typing I	Walker	8: 55	MWF	31
Accounting I	Cubley	8: 00	MW	30
Shorthand	Walker	8: 00	M-F	30A
Advanced Shorthand	Walker	10: 30	MWF	30A
Secretarial Work	Walker	1: 15	TTh	30A
Business Correspondence	Cubley	10: 30	T	30
Accounting II	Cubley	8: 55	TTh	30
Advanced Typing	Walker	11: 25	MWF	31
Advanced Dictation	Walker	Arr.		30A
Advertising	Cubley	8: 00	TTh	30
Advanced Accounting II	Cubley	11: 25	MWF	30
Reading and Conference	Walker	Arr.		30A
Methods in Teaching Typing	Walker	1: 15	M	30A
Marketing	Cubley	1: 15	TTh	30

## CHEMISTRY

General Chemistry				
Sec A	Thurston	8: 00	MWF	S.H.
Sec B	Thurston	8: 55	MWF	S.H.
Pre-Nursing Chemistry	Thurston	10: 30	MWF	S.H.
El. Organic Chemistry	Thurston	10: 30	TTh	S.H.
Qual. Analysis	Thurston	Arr.		S.H.
Aliphatic Series	Bowers	Arr.		S.H.
Teachers' Methods	Thurston	Arr.		S.H.

## EDUCATION

Introduction to Education	Neilsen	10: 30	MWF	T.S.
Child Life & Problems	Sittner	11: 25	MWF	23
Secondary Education	Sittner	8: 55	MWF	23
Teaching Techniques	Neilsen	8: 55	MWF	T.S.
Teaching I	Neilsen	Arr.		T.S.
Teaching II	Neilsen	Arr.		T.S.
Diagnostic & Remedial Teaching	Neilsen	Arr.		T.S.
General Psychology				
Sec. A	Sittner	10: 30		23
Sec.B	Sittner	2: 10		23
Human Relations	Foreman	Arr.		
Special Methods in Language Arts	Beatty	2: 00	TTh	Acad.
Special Methods in Mathematics				
and Phys. Sc.	Scott	2: 00	TTh	Acad.
Special Methods in Soc. Sc.	Haussler	2: 00	TTh	Acad.

## ENGLISH

## COMPOSITION

Freshman Composition				
Sec. A	Rogers	8: 55	MWF	13
Sec B	Little	10: 30	MWF	22
Sec C	Little	11: 25	MWF	21
Sec D	Rogers	11: 25	MWF	13
Sec E	Little	11: 25	M-F	22
Sec F	Lewis	1: 15	M-F	22
Teachers English	Little	8: 00	TTh	22

## LITERATURE

Course	Instructor	Hour	Days	Room
American Literature	Little	8:00	TTh	21
English Literature	Lewis	8:55	MWF	24
Romantic Period	Little	10:30	MWF	21
Am. Literary Masters	Little	8:55	TTh	21
Dramatic Literature	Little	8:55	MWF	21
Seminar	Little	Arr.		

## JOURNALISM

News Writing	Little	11:25	TTh	21
Adv. Journalism	Little	5:00	TTh	21

## SPEECH

Essentials of Speech				
Sec. A	Lewis	8:55	TTh	24
Sec. B	Lewis	10:30	TTh	24
Parliamentary Procedure	Lewis	8:00	TTh	24
Radio Production	Lewis	Arr.		24

## HISTORY

European Civilization	Christian	11:25	MWF	35
United States History	Christian	8:55	MWF	35
Ancient History	Lindsjo	11:25	MWF	34
Current History	Christian	11:25	TTh	35
Latin America	Christian	8:55	TTh	35
Seminar	Christian	1:15	W	35
American Government	Christian	10:30	MWF	35
Religion in U. S.	Christian	10:30	TTh	35

## HOME ECONOMICS

Food Study	Schluntz	8:55	MW	H.E.
Consumer Buying	Schluntz	10:30	TTh	H.E.
Clothing I	Schluntz	1:15-4:00	TTh	H.E.
Tailoring	Schluntz	1:15-4:00	MW	H.E.
Child Development	Schluntz	10:30	MWF	H.E.
Adv. Institutional Training	Schluntz	Arr.		H.E.

## LIBRARY SCIENCE

Library Science	Sittner	Arr.		Lib.
-----------------	---------	------	--	------

## MATHEMATICS

Advanced Algebra	Davidson	11:25	MTWF	15
General Mathematics	Davidson	10:30	MWF	15
Calculus	Davidson	8:00	MTWF	15
Fundamental Mathematics	Brinker	8:00	MWF	1
Differential Equations	Davidson	8:55	TTh	15
Theory of Equations	Davidson	10:30	TTh	15

## MODERN LANGUAGES

Course	Instructor	Hour	Days	Room
Elementary German		10:30	M-F	1
Intermediate German	Sonnenberg	11:25	MWF	1
German Composition	Sonnenberg	11:25	TTh	1
German Romanticism	Sorenson	8:55	MWF	33
German Directed Reading	Sorenson	Arr.		33
Elementary French	Sorenson	10:30	M-F	33
Intermediate French	Sorenson	11:25	MWF	33
French Composition	Sorenson	11:25	TTh	33
French Literature of the 19th Cent.	Sorenson	8:00	MWF	33
French Directed Reading	Sorenson	Arr.		

## MUSIC

Dictation	Gernet	Arr.		M.C.
Harmony I	Gernet	1:15	MW	M.C.
Directing I	Johnson	2:10	M	M.C.
Elementary Stringed Instruments	Johnson	Arr.		M.C.
Elementary Woodwind and Brass Instruments	Gernet	Arr.		M.C.
Instrumental Ensemble	Johnson	3:05	MF	M.C.
Directing II	Johnson	2:10	W	M.C.
Music Survey	Gernet	Arr.		M.C.
Sightsinging	Gernet	10:30	TTh	M.C.
Accompanying	Gernet	Arr.		M.C.
Harmony II	Gernet	1:15	TTh	M.C.
Advanced Sightsinging	Gernet	2:10	MW	M.C.
Vocal Ensemble	Hamilton	Arr.		M.C.
Chamber Music	Johnson	Arr.		M.C.
History of Music	Gernet	Arr.		M.C.
Form and Analysis	Gernet	Arr.		M.C.
Counterpoint	Gernet	3:05	MW	M.C.
Composition	Gernet	Arr.		M.C.
Orchestration	Johnson	Arr.		M.C.
Band	Johnson	Arr.		M.C.
A Cappella	Hamilton	Arr.		

## NURSING EDUCATION AND HEALTH

History of Nursing	Marsh	11:25	TTh	S.H.
Methods in Nursing Education	Marsh	5:00	M	S.H.
Methods in Nursing Education	Marsh	4:00-6:00	W	S.H.
Seminar in Nursing Education	Marsh	4:00	M	S.H.
Health Principles				
Sec. A	Marsh	8:55	MWF	S.H.
Sec. B	Marsh	10:30	MWF	S.H.

## PHYSICS

General Physics	Kretschmar	8:55	MWF	2
Machine Shop				
Sec. A	Kretschmar	1:15		
		to 5:30	MW	2
Sec. B	Kretschmar	1:15		
		to 5:30	TTh	2
Electricity and Magnetism	Kretschmar	11:25	MWF	2
Heat	Kretschmar	10:30	TTh	2
Practice Teaching in Physics	Kretschmar	Arr.		2



## PHYSICAL EDUCATION

Course	Instructor	Hour	Days	Room
Physical Education I				
(Men)	Brinker	2: 10	MW	C.H.
(Women)		2: 10	TTh	C.H.
Physical Education II				
(Men)	Brinker	4: 00	MW	C.H.
(Women)		4: 00	TTh	C.H.
Advanced Swimming		4: 00	TTh	
Remedial Calisthenics				
(Men)		3: 05	MW	C.H.
(Women)		3: 05	TTh	C.H.
Medical Corps				
Sec. A	Brinker	8: 00	T	C.H.
Sec. B	Brinker	8: 55	Th	C.H.
Advanced Medical Corps	Brinker	Arr.		C.H.
Red Cross First Aid	Brinker	Arr.		C.H.

## VOCATIONAL

Printing I, II, III	Collins	Arr.		
Technical Drawing	Emmerson	1: 15		
		to 4: 15	TTh	
Cabinet Making	Emmerson	2: 10	T	
Woodturning	Emmerson	Arr.		
Carpentry I	Emmerson	1: 15		
		to 5: 15	MW	
Adv. Technical Drawing	Emmerson	Arr.		
Carpentry II	Emmerson	Arr.		
Auto Mechanics	Schiller	4: 00	T	
Baking	Gibbon	Arr.		
Dairying	Losey	Arr.		

## Laboratory Appointments

## BIOLOGY:

*Zoology*

- Section A Tuesday, 1: 15-5: 15.
- Section B Thursday, 1: 15-5: 15.

*Elementary Botany*

- Section A Tuesday 1: 15-5: 15.
- Section B Thursday, 1: 15-5: 15.
- Section C Sunday, 8: 00-12: 00.
- Section D Monday, 1: 15-5: 15.

*Biology*

- Section A Sunday, 8: 00-12: 00.
- Section B Monday, 1: 15-5: 15.

*Mammalian Anatomy*

- Sunday, 1: 15-5: 15.

*Embryology*

- Tuesday, 1: 15-5: 15.

*College Physiology*

- Tuesday, 1: 15-5: 15.

*Morphology of Plants*

- Wednesday, 1: 15-5: 15.

## NURSING EDUCATION:

*Micro-Biology*

Section A Monday, 1:15-3:15 and Wednesday, 1:15-3:15.

Section B Monday, 3:15-5:15 and Wednesday, 3:15-5:15.

*Anatomy and Physiology*

Section A Thursday, 1:15-3:15.

Section B Thursday, 3:15-5:15.

## CHEMISTRY:

*General*

Section A Sunday, 8:00-12:00.

Section B Monday, 1:15-5:15.

Section C Wednesday, 1:15-5:15.

*Pre-Nursing*

Section A Sunday, 1:15-4:15.

Section B Tuesday, 1:15-4:15.

*Elementary Qualitative Analysis*

Monday, 1:15-5:15.

*Elementary Quantitative*

Monday, 1:15-5:15.

*Advanced Qualitative*

To be arranged.

*Advanced Quantitative*

To be arranged.

*Elementary Organic*

Thursday, 1:15-5:15.

*Aliphatics*

To be arranged.

*Aromatics*

To be arranged.

## PHYSICS:

General, Tuesday, 1:15-4:45 p. m. Sunday, 8:30-12:00 a. m.

## Machine Shop

Section A. Monday and Wednesday, 1:15-5:30 p. m.

Section B. Tuesday and Thursday, 1:15-5:30 p. m.

Electricity and Magnetism, Tuesday and Thursday, 1:15.

## WOODWORKING AND CARPENTRY:

Shop Hours: Shop is open from 8:00-12:00 a. m. and 1:00-5:00 p. m. except Saturdays, and Friday and Sunday afternoons.

MECHANICAL DRAWING: Tuesday, Thursday, 1:15.

PRINTING: See instructor for appointments.

## ANTO MECHANICS:

Class appointment for all students, Tuesday, 4:00-5:00 p. m.

ACCOMPANYING: See instructor for appointments.

TYPEWRITING: By appointment, 8:00 a. m. to 4:00 p. m.

# INDEX

Absences, Chapel .....	25	Enrollment .....	101
Absences, Class .....	31	Ensemble .....	88
A Cappella Choir .....	88	Examinations .....	33
Administration Building .....	13	Expenses .....	17
Administration, Officers .....	6	Expenses, Estimated .....	20
Admission to the College .....	29	Explanation of Credits .....	33
Admission to the Freshman Class .....	29	Faculty .....	6-9
Advanced Standing .....	36	Fees, A Cappella Choir .....	21
Aims .....	11	Fees, Diploma, Degree .....	19
Alumni Association Student		Fees, Fixed .....	19, 20
Loan Fund .....	23	Fees, Glee Club .....	21
Amount of Work .....	31	Fees, Gymnasium .....	20
Art .....	59	Fees, Laboratory .....	20
Auto Mechanics .....	95	Fees, Special .....	19
Automobiles .....	26	French .....	85
Bequests and Donations .....	23	Freshman Week .....	29
Bible .....	55	Full Work .....	32
Bible Workers Course .....	100	German .....	83
Biblical Languages .....	60	Government .....	24
Biology .....	61	Grades and Honor Points .....	34
Board of Trustees .....	5	Graduates .....	102
Buildings and Equipment .....	13	Graduation .....	38
Business Administration .....	48, 64	Greek .....	60
Calendar .....	2	Health .....	63
Callers .....	27	Hebrew .....	60
Carpentry .....	96	Historical and Descriptive Sketch .....	13
Certificates .....	44	History .....	78
Certification, Denominational .....	44	Home Economics .....	80
Certification, Secondary Teachers .....	45	Home Economics Cottage .....	14
Certification, State .....	47	Honor Credits .....	33
Chapel .....	25	How to Remit .....	18
Chemistry .....	67	Journalism .....	76
Choral Organizations .....	88	Junior College Credit .....	37
Citizenship .....	24	Junior College Courses .....	50
Class Standing .....	32	Laboratory Appointments .....	107, 108
Class Regulations .....	31	Leaving the Campus .....	27
(The) College and Its Aims .....	11	Library .....	15
College Homes .....	26	Library Science .....	82
Columbia Hall .....	14	Literature, English .....	74
Committees of the Faculty .....	10	Local Board .....	5
Composition .....	74	Location and Grounds .....	13
Cost of Attendance .....	17	Lower Division Courses .....	35
Course Numbers .....	35	Major and Minor Study .....	38, 39
Degrees, Bachelor of Arts .....	38, 40	Mathematics .....	82
Degrees, Bachelor of Science .....	38, 42	Mechanical Arts Course .....	53
Degrees, Bachelor of Theology .....	98	Medical Examination and Service .....	26
Degrees and Diplomas .....	38	Modern Languages and Literatures .....	83
Deposit .....	17	Moral Conduct .....	25
Dormitories .....	13	Music .....	86
Dormitory Charges .....	18	Music Charges .....	21
Education, Elementary .....	69, 71	Music Rentals .....	21
Education, Secondary .....	69, 72	Music Conservatory .....	14
English .....	73	Nursing Education .....	43, 63
English Literature .....	74		



Orchestra and Band .....	88	Sabbath Observance .....	25
Organ .....	89	Scholarship .....	34
Organizations .....	16	Scholarship Plan .....	22
Physical Education .....	37, 93	School of Theology .....	98
Physics .....	91	Science Hall .....	14
Pianoforte .....	88	Senior Class Membership .....	39
Pipe Organ .....	89	Senior College Courses .....	38
Pledge, Dormitory .....	27	Secretarial Science .....	49, 64
Political Science .....	94	Social Relations .....	25
Pre-Dental .....	52	Special Students .....	33
Pre-Dietetics Course .....	53	Speech .....	77
Pre-Engineering .....	53	Student Activities .....	16
Pre-Nursing .....	54	Student Manual .....	25
Preparatory Medical Course .....	52	Study Hour .....	27
Preparatory Students, School Home .....	28	Summer School .....	101
Private Lessons .....	31	Teacher Training Courses .....	46
Printing .....	95	Teacher Training School .....	14
Psychology .....	72	Time Schedule .....	103
Publications of the Associated Students .....	16	Tuition Acquired by Labor .....	22
Quarter System .....	33, 55	Tuition, College .....	18
Refunds and Discounts .....	18	Upper Division Courses .....	35
Registration .....	4, 30	Vacation Absences .....	26
Regulations, General .....	24	Violin .....	89
Regulations, Dormitory .....	26	Vocational Credit .....	40
Religious Activities .....	15	Vocational Equipment .....	15
Rentals, Typewriter .....	20	Voice .....	90
Residence .....	24	Withdrawal .....	32
Residence Work .....	40	Woodwork .....	96
Requirements for Graduation .....	40	Worship Attendance .....	28
Rooms .....	27		







WALLA WALLA COLLEGE LIBRARY



3 1892 00220 3258

KED ALCOVE